

NAME	DWT	BLT	DELY	REDELY	RATE	CHARTERER	NOTES	DATE
Ocean Vanguard	206,258	1994	Kwang Yang Jul 27-30	Fos	\$25,000	NSS		17/7
Momma Mia	200,000	2007	Japan ex yard Sep 2007	Worldwide	\$30,000	SK Shipping	5 Years	19/7
Meynell	185,688	1997	Kwang Yang Jul 1-5	Far East	\$39,000	BHP Billiton NL	2 laden legs	3/7
New Forest	185,688	1996	Qingdao Jul 13	China	\$33,000	Cosco Qingdao	via Brazil	6/7
Fantastiks	180,265	2005	China Jul 20-25	worldwide	\$37,000	K Line	3-5 months	12/7
Ocean Shine	180,201	2005	China spot	China	\$35,000	Chart Not Rep		13/7
Cape Condor	180,000	2004	Yura Jun 27	worldwide	\$30,500	Cetragpa	5 years retro	3/7
Luigi D'Amato	180,000	2005	Rotterdam Aug 3-5	Far East	\$61,500	Korea Line		26/7
Cape Condor	180,000	2004	Immingham Aug 17-19	Skaw-Passero	\$48,000	Cobelfret	transatlantic R/V	26/7
Cape Harrier	177,393	2005	Far East Sep 1-Oct 32	Worldwide	\$37,000	TMT	3 Years	19/7
Pacific Explorer	177,000	2006	newbuilding delivery Japan spot	worldwide	\$31,888	BHP Billiton	3 years trading	4/7
Great Challenger	176,279	2005	Fos Aug4-6	Worldwide	\$55,000	Sinochart		27/7
Cape Mars	175,775	2003	south China Aug 1-5	worldwide	\$40,000	Cargill	5-7 months	18/7
Huang Shan	175,700	2003	Singapore Aug17-18	Rotterdam	\$37,250	SWI SSMAR		27/7
I na	175,600	2003	China prompt	China	\$45,000	BHP Billiton NL		21/7
Mineral Capeasia	175,000	2005	Far East Sep 1-30	Worldwide	\$36,500	TMT	3 Years	19/7
Zorbas	174,690	1996	Qingdao Jul 10-12	China	\$32,000	North China Shipping		3/7
Tian Bao Hai	174,505	2004	Shanghai prompt	Continent	\$28,000	BHP Billiton NL		21/7
Anangel Fortune	174,333	2005	worldwide Oct/Dec 06	worldwide	\$29,000	Cetragpa	5 years trading	4/7
CHS World	174,231	2006	Hadera Jul20-30	sk-passero	\$45,000	Sk Shipping Korea	0 TA RV	27/7
Ocean Victory	174,148	2005	Qingdao Jul 28-30	Japan	\$41,000	Shinwa Kaiun		17/7
Avore	174,093	2006	worldwide Mar 7	worldwide	\$30,500	Cargill	5 years	11/7
CSK Glory	173,044	2002	Shanghai Jul 21-22	China	\$39,000	Sk Shipping		14/7
Mineral Viking	172,964	2001	Continent Aug 21-31	worldwide	\$42,500	TMT Korea	2 years	26/7
Giuseppe Lembo	172,632	1999	Sines Aug 12-15	Skaw-Passero	\$50,000	SK Shipping Korea	transatlantic round voyage	28/7
Cape Venus	172,612	1996	Shanghai Aug 1-10	China	\$46,000	Glory Wealth Qingdao		21/7
Nisshin Trader	172,517	2001	Dunkirk Jul 15-17	China	\$48,500	Sinochart	Via Brazil	10/7
Gran Trader	172,517	2001	Dalian Jul 8-10	China	\$32,000	SK Shipping	via West Australia	6/7
Cape Jupiter	172,480	1997	Passero Jul 28-30	China	\$63,500	TMT Korea		28/7
Channel Navigator	172,058	1997	Shanghai Jun 27-30	Continent	\$20,500	Swissmar		3/7
Channel Navigator	172,058	1997	Continent Aug 25-Sep 5	worldwide	\$41,500	STX Panocean Shpg	2 years	25/7
Anangel Destiny	171,997	1999	opt Jan-07	worldwide	\$33,000	BHP Billiton		4/7
Pacific Fortune	171,995	2004	South Korea Jun 27-30	worldwide	\$34,500	EDF	3 years	3/7
Channel Alliance	171,978	1996	Redcar Aug 20-25	Skaw-Passero	\$37,500	SK Shipping	transatlantic round voyage	13/7
Thalassini Niki	171,670	2005	Shanghai Jul 27-29	China	\$45,000	BHP Billiton Coal		24/7
Fertilia	171,565	1997	Passero Jul 24-27	Fos	\$24,000	Elcano		21/7
Cape Island	171,516	2004	Xingang Jul 6-8	China	\$34,000	BHP Biliton	via West Australia	5/7
CIC Elli S	171,218	2003	Beilun Aug 4	China	\$41,000	Sinochart		28/7
Mineral Azalea	171,199	1999	Shanghai Jul 17-19	China	\$36,500	SK Shipping		13/7
Ocean Cosmos	171,191	2000	S Japan Jul 6-8	China	\$42,000	Cargill Geneva		24/7
Su-Oh	171,081	1997	Vietnam Aug 6-8	China	\$46,000	BHP Billiton NL		20/7
Aquabreeze	171,014	2003	Far East Oct 1-30	worldwide	\$37,000	Constellation Energy	3 years	26/7
Alpha Century	170,415	2000	Baoshan Jul 6-8	worldwide	\$38,500	K Line - Kawasaki	4-6 months	3/7
Rubin Hope	170,409	1999	Rotterdam Jul 1	China	\$45,500	Sinochart	via Brazil	6/7
Aigaion	170,150	2004	Kure Jul 28-30	worldwide	\$42,500	Chart Not Rep	4-6 months	21/7
CSE Duke	170,108	2001	Continent Aug 21-31	worldwide	\$32,750	BHP Billiton NL	5 years	31/7
CHS Splendor	170,094	2006	Rizhao Jul 10-15	China	\$34,000	BHP Billiton		13/7
CSE Duke	170,085	2001	Shanghai prompt	Continent	\$19,000	Swiss Marine	via Richards Bay	10/7
Cyclades	170,050	2004	Bayuquan Jul 16-20	China	\$33,500	BHP Billiton		13/7
Cape Awoba	170,000	1996	Far East Sep 1-30	worldwide	\$37,500	Transfield HK	3 years	26/7
Front Breaker	169,177	1991	Hunterston Jul 21-23	Far East	\$49,750	STX Panocean		17/7
Aquagem	167,102	1997	Dalian Jul 4	Japan	\$30,250	K Line	via Esperance	10/7

Rubin Grace	166,939	1995	Ningbo Jul 23-25	China	\$40,000	SK Shipping		17/7
Pacific Vitality	165,813	1996	Rotterdam Jul 30-31	China	\$47,000	Pacific Bulk		14/7
Princess Katherine	164,100	1986	Qingdao Jul 4- 6	worldwide	\$26,500	STX Panocean Shpg	4-6 months	3/7
Princess Katherine	164,100	1986	Qingdao Jul 4-6	Far East	\$26,500	STX Pan Ocean	min 90 days/max 120 days	4/7
Anangel Ambition	161,587	1994	Nantong Jul 17-18	worldwide	\$35,350	Glory Wealth	4/6 months	7/7
Anangel Splendour	161,587	1993	Nantong Jul 7	Skaw-Cape Passero	\$19,000	Swiss Marine	via Richards Bay	7/7
Cape Hawk	161,475	1995	Qingdao Jul 15-20	Far East	\$36,000	Sinchart	2 Laden Legs	14/7
Cape Eagle	161,475	1993	Yantai Jul 27-29	Worldwide	\$40,000	BHP Billiton NL	4-6 mnths	20/7
Cape Eagle	161,475	1993	Yantai Jul 27-30	worldwide	\$42,500	CTM		28/7
Alpha Friendship	161,417	1996	Kure Jul 15-20	Worldwide	\$36,000	Sinchart		14/7
Aquabella	161,000	1995	Nantong Jul 17-18	China	\$32,000	SK Shipping		13/7
Chrismir	159,829	1997	Al Jubail Jul 20-25	Skaw Cape Passero	\$28,000	Swiss Marine	via Richards Bay	7/7
Doceriver	152,308	1986	Nantong Jul 10-15	China	\$28,000	NCS	via West Australia	7/7
Cape Europe	152,025	1993	Kwang Yang Jul 18-22	South Korea	\$29,500	HMM		14/7
China Fortune	152,011	1992	Bahrain Jul 20-30	worldwide	\$34,500	STX Panocean	3-5 months	13/7
Nymphe	151,330	1994	Qingdao Jul 7-9	Skaw-Passero	\$19,000	Bocimar	via Richards Bay	6/7
C. March	151,053	1995	Mailo Jul 25-28	China	\$43,000	BHP Billiton NL		20/7
Nike	151,000	1995	Gijon Jul 16-18	China	\$44,000	Pacific Bulk		13/7
Kate	150,903	1995	Xingang Jul 15-17	Cape Passero	\$22,500	BHP Billiton		14/7
Formosabulk Allstar	149,850	1995	Beilun Jul 22-23	Far East	\$33,000	Chart Not Rep	2 laden legs	13/7
Lowlands Grace	149,518	1991	Rizhao Jul 14-16	China	\$27,000	Sinchart	via Port Walcott	10/7
C. Koreana	149,516	1990	Sines Aug 01-10	Iskenderun	\$43,000	Hanjin Shippng Seoul		20/7
Netadola	149,475	1993	Nantong Jul 9	worldwide	\$30,500	SK Shipping	3-5 months trading	5/7
Global Victory	149,155	1996	Carboneras Jul 15-20	Skaw-Cape Passero	\$33,000	SK Shipping	Round trip	10/7
Cape America	149,000	1991	Shanghai Aug 5-10	worldwide	\$40,000	CTM	4-6 months	31/7
Tian Li Hai	148,527	1999	Japan Aug 1-5	worldwide	\$38,000	CTM	4-6 months	31/7
Australian Fame	146,347	1982	Kaohsiung Jul 24-28	China	\$25,000	Transfield		17/7
Captain Vangelis L	146,115	1992	Passero Aug 3-5	Fos	\$40,000	STX Panocean Shpg		26/7
Papa	139,000	1984	Dangjin Jul 21-23	China	\$28,500	Transfield		17/7
Spartounta Breeze	135,070	1989	Richards Bay Jul 15-30	Skaw-Passero	\$14,500	Swiss Marine	plus \$600,000 bal bon.	6/7
Venetico Breeze	134,982	1990	Kaohsiung Aug 4-6	Worldwide	\$24,000	Chart Not Rep	15-18 Months	19/7
Mercedes	133,357	1981	Beilun Jul 26 Aug 5	Mailao	\$22,000	Transfield HK		20/7
Riva	132,000	1981	South Korea Jul 15-17	South Korea	\$18,000	Hyundai Merchant Marine		13/7
Zosco Ningbo	127,000	1982	Kaohsiung Aug 5-6	Taiwan	\$29,000	China Steel Express		26/7
Vessel to be nomin	100,000	2006	Marugame Aug 5-10	Singapore-Japan range	\$22,000	Louis Dreyfus France		28/7
Vessel to be nomin	100,000	2006	Japan ex yard Dec 1-10	world-wide	\$19,000	Korea Line	2 years	21/7
Vessel to be nomin	100,000	2006	China ex yard Aug 20-30	worldwide	\$20,000	Chart Not Rep		31/7
Ocean Lord	82,977	2005	Continent Jul 15-25	UKCont	\$24,000	Golden Ocean HK		26/7
Medi Hong Kong	82,800	2006	ex yard Tsuneishi Jul-31	Aden/PMO	\$23,000	Chart Not Rep		31/7
Filomena Lembo	82,500	2006	Kamaichi Spot	Malaysia	\$23,750	Hanjin Shppng Seoul		24/7
Swift-Favour	82,460	1981	Dangjin spot	Italian Mediterranean	\$16,000	Deiulemar		18/7
Thalassa	76,975	2003	Kushiro Aug 4-6	Singapore/Japan range	\$24,750	Armada Switzerland		31/7
CMB Florentina	76,838	2005	Xingang Jul 11-15	St Lawrence	\$21,900	Bulk Marine	via North China	7/7
Pos Courage	76,801	2004	Tilbury Jul 25-30	UK Continent	\$23,500	Transbulk		18/7
Pos Eternity	76,801	2005	Montoir Jul 26-28	Spore/Jpn Rge	\$24,750	Chart Not Rep		20/7
Maritime Anita	76,737	2004	North China Jul 30-31	worldwide	\$25,000	North China Shanghai	5-6 months	25/7
CSE Fortune Express	76,634	2002	Carboneras Jul 23-27	Far East	\$23,800	Glory Wealth		17/7
Belisland	76,634	2003	Cape Passero Jul-12	Singapore-Japan	\$24,000	Chart Not Rep		18/7
Cse Harmony Express	76,634	2002	Fangcheng Jul 21-23	Worldwide	\$24,000	AWB Australia	5-7 mnths	20/7
Double Prosperity	76,633	2005	Hitachinaka Jul 9-11	Singapore-Japan	\$22,500	Chart Not Rep		11/7

Red Rose	76,629	2003	Xiamen Jul 12-16	worldwide	\$25,750	Chart Not Rep	4-6 months	3/7
Botafogo	76,623	2001	Kamiiso Jul 23-25	Japan	\$24,000	Chart Not Rep		25/7
Nord Saturn	76,600	2005	USG Jul 23-25	Cape Passero	\$20,500	Cargill	plus \$450,000 bal bon.	14/7
Betis	76,600	2004	Higashi- Harim Jul 25-27	Far East	\$23,000	Oldendorff Carriers		20/7
Navios Orion	76,600	2004	Takehara Jul 18-20	Worldwide	\$22,750	Chart Not Rep	4-6 Months	17/7
Pos Courage	76,600	2004	Liverpool Jul27-30	Far East	\$27,000	Glory Wealth Qingdao		27/7
Amarantha	76,598	2005	Yokkaichi Aug 1-10	worldwide	\$25,250	TMT Korea	4-6 months	21/7
Good Hope Max	76,536	2005	Genoa Jul 1	China	\$24,500	Chinese	via east coast South America	5/7
Yusho Regulus	76,500	2006	PMO prompt	Singapore-Japan	\$19,200	Chart Not Rep		11/7
Maribella	76,500	2004	Ghent Jul 23-25	Far East	\$24,500	Sinochart		19/7
Medi Vitoria	76,500	2004	Antwerp Aug3-7	Worlwide	\$23,250	Fratelli D'Amato Rom	11-13 Mnths	27/7
Asteriks	76,500	2005	Ghent Jul28-30	Skaw/Passero	\$25,250	Chart Not Rep	18-20 Days	27/7
Red Queen	76,500	2004	Spain Aug11-20	Worlwide	\$25,000	Glory Wealth Qingdao	3-5 Mnths	27/7
Medi Vitoria	76,500	2004	Antwerp Aug3-7	Worlwide	\$25,000	Chart Not Rep	5-7 Mnths	27/7
Maritime Christine	76,436	2004	Missi Jul 28-Aug 3	Singapore-Japan range	\$23,000	STX Panocean	plus \$475,000 bal bon.	21/7
Bulk Two	76,429	2004	Constantza Aug 5- 7	worldwide	\$26,000	Oldendorff Carriers	4-5 months	25/7
Pansolar	76,343	2005	USG Aug 1-10	Aden/PMO	\$24,500	Cargill Geneva	plus \$500,000 bal bon.	25/7
Medi Baltimore	76,290	2005	Oita Jul 14-16	Singapore-Japan	\$21,500	Chart Not Rep		12/7
Ivs Merlot	76,263	2005	Qinzhou Aug 06-10	Worldwide	\$23,500	Sinochart		17/7
Anthemis	76,200	2004	Higashi-Harim Jul 28-30	Passero	\$22,000	National Navigation		28/7
Atlantic Breeze	76,150	2004	Gijon Jul 5	Skaw-Passero	\$22,500	Chart Not Rep	transatlantic R/V	13/7
Eleni	76,015	2005	Porto Vesme Jul 7-12	Continent	\$22,750	Cargill		12/7
Efrossini	76,015	2003	R Bay Aug 4-5	Portbury	\$18,000	Swissmar	plus \$325,000 bal bon.	20/7
Patya Bulker	76,015	2004	Xingang Jul 24-27	India	\$25,000	STX Panocean Shpg		24/7
Vassos	76,015	2004	Passero Jul 21-23	Spore/Jpn Rge	\$25,000	Cargill Geneva		24/7
Lake Sequoia	75,955	2001	Toyama Shinko Spot	Singapore-Japan	\$21,750	Chart Not Rep		17/7
Nord Venus	75,949	2005	Haldia Jun 30 -Jul 5	China	\$25,000	Cargill	via east coast India	4/7
Torm Charlotte	75,949	2005	Fos Aug 5-7	Far East	\$26,000	Cargill Geneva		25/7
Brunhilde salamon	75,940	2001	Kaohsiung Jul 20-25	Worldwide	\$24,000	BHP Billiton NL	4-6 mnths	20/7
Epson Trader	75,928	2001	Lianyungang Jul 18-19	India	\$20,500	STX Panocean		19/7
Torm Bornholm	75,912	2004	Bottiglieri di Navigazione spot	Zhangjiagang	\$26,000	MOSK	via Philippines	4/7
Loch Long	75,845	2004	Recalada Jul 25-26	Aden	\$26,000	Transgrain	plus \$650,000 bal bon.	12/7
Marvellous	75,746	2002	USG Aug 1-3	Spore/Jpn Rge	\$22,000	Chart Not Rep	plus \$510,000 bal bon.	20/7
Ikan Bilis	75,729	2004	Surabaya Aug 1-3	Taiwan	\$28,000	Daebo Shipping		31/7
Pistis	75,631	1984	Shekou Jul 7- 9	PMO	\$21,750	Golden Ocean HK		3/7
Star of Nippon	75,611	2004	Rotterdam Aug 2-4	China	\$27,250	Daeyang Shipping		31/7
Kookaburra	75,607	2000	Vado spot	China	\$23,000	Transgrain	via east coast South America	7/7
Swift-Fortune	75,594	1982	Tarragona Jul 22-24	Continent	\$17,500	Cargill Geneva		25/7
Ellivita	75,522	1999	Southwest Pass Jul 22-25	Worldwide	\$22,000	Cargill	plus \$425,000 bal bon.	14/7
Ocean Lyra	75,500	2005	South Japan Jul 16-18	Singapore-Japan	\$20,500	Louis Dreyfus		14/7
Yomoshio	75,500	2001	Sakaide Jul 19-21	Continent	\$22,000	Fednav		18/7
Avax	75,500	2006	Huangpu Jul 25-30	Skaw-Gibraltar	\$22,700	Cargill		14/7
Yasa Team	75,500	2006	Tilbury Jul 25-30	Skaw/Passero	\$25,000	Armada Switzerland	40 days	20/7
Kavo Alkyon	75,500	2005	Ningbo Jul 15-16	Worldwide	\$22,750	Bunge	4-6 Months	17/7
Orsolina Bottiglieri	75,500	2001	Japan Jul 27-29	Spore/Jpn Rge	\$23,000	Chart Not Rep		24/7
Pessada	75,462	1999	Ko Sichang Jul 28-30	Gib-Skaw	\$23,500	Furness Withy Melbou		31/7
Hainan	75,339	1996	Canakkale Jul 22-28	China	\$22,700	Oldendorff Carriers		17/7

Anastasia	75,331	2006	Matsuura spot	Worldwide	\$22,000	Chart Not Rep	3-5 months	18/7
Loch Alyn	75,250	2004	Lulea Jul 31-Aug 5	Worldwide	\$24,000	Armada Switzerland	4-6 mnths	20/7
Alcyon	75,247	2001	USG Jul 13-15	Mediterranean	\$19,500	plus \$450,000 ballast bonus.	Bunge	14/7
Oceanis	75,247	2001	Zhangjiagang Jul 26-27	Worldwide	\$24,000	Chart Not Rep	4-6 mnths	20/7
Raffaele Iuliano	75,229	1995	Recalada Aug 2-4	Far East	\$24,500	Cargill Geneva	plus \$550,000 bal bon.	21/7
Leto	75,169	2001	PMO Prompt	Far East	\$21,750	Bunge		20/7
Marina	75,122	2000	Cape Passero Jul 10-15	Singapore	\$25,000	Chart Not Rep	via EC South America	4/7
Thalia	75,120	2001	Jorf Lasfar Jul 8-10	Skaw	\$26,000	Oceanbulk	via EC South America	4/7
Spartia	75,115	2000	Antwerp Aug 15-20	worldwide	\$24,750	Glory Wealth Qingdao	4-6 months	26/7
Angelic Glory	75,007	2002	Ko Sichang Jul 12-14	Port Sudan	\$24,250	Shadab	via West Australia	7/7
National Prosperity	75,000	1995	Zhangzhou Jul 30-Aug 3	Worldwide	\$21,000	Transfield HK	11-13 mnths	24/7
Amazon	74,910	2001	Surabaya spot	Singapore-Japan Range	\$29,000	Chart Not Rep	via Australia	6/7
Alkyon	74,875	2001	Kaohsiung prompt	Skaw-Passero	\$25,000	Toepfer		28/7
Sonoma	74,823	2001	Amsterdam Jul 1	Far East	\$23,750	Bunge	via east coast South America	5/7
Ageless	74,823	2004	Gibraltar Jul-5	Skaw-Cape Passero	\$22,000	Azure	via est coast South America	10/7
De Ping Hai	74,823	2002	Valencia Jul 10-15	Antwerp	\$23,500	Cobelfret	via Nouadhibou	6/7
Angelic Grace	74,750	2001	Amsterdam Spot	Singapore-Japan	\$23,100	Cargill		17/7
Angelic Power	74,750	2001	Muscat Spot	Worldwide	\$21,500	Bunge	0 2 LLegs	24/7
Samjohn Amity	74,744	1998	Xiuyu Jul 9-10	Kaohsiung	\$21,500	China Steel Express		12/7
Goldbeam Trader	74,700	2001	Kaohsiung Spot	Skaw-Cape passero	\$21,000	Chart Not Rep		17/7
Primrose	74,700	2001	worldwide Nov 1-Dec 31	worldwide	\$19,500	North China Lines	2 years	25/7
Samjohn Liberty	74,600	1998	Ijmuiden Jul 26-30	China	\$26,000	West Asia Melbourne		21/7
Liberty One	74,500	2000	Passero Jun 30-Jul 1	worldwide	\$24,000	Armada Switzerland	4-6 months	3/7
Yuan Zhi Hai	74,500	2005	Rotterdam Aug4-10	Worldwide	\$23,000	Daeyang Shipping	11-13 Mnths	27/7
Seamaid	74,461	1999	worldwide Oct 1-31	worldwide	\$19,250	Giuseppe Bottiglieri	2 yrs	24/7
Four Steel	74,443	1999	Matsuura Jul 29-Aug 4	Singapore-Japan range	\$22,500	K Line		28/7
Yong Li	74,382	2001	Haldia Jul 6-9	Singapore-Japan Rge	\$25,500	Chart Not Rep		4/7
Kingston Trader	74,242	1999	Kaohsiung Jul 26-30	Hong Kong	\$23,000	D'Amico		18/7
Desert Eagle	74,141	2002	Haldia Jul 17-Aug 2	China	\$24,000	Chart Not Rep		18/7
Gallia Graeca	74,133	2001	Nagoya Jul 9-10	Singapore-Japan range	\$23,000	PCL	via Australia	10/7
COS Intrepid	74,119	2001	Norfolk Jul 15-17	Far East	\$21,500	Bunge	plus \$300,000 bal bon.	10/7
Salandi	74,100	1999	Huangpu Jul 22-23	Mediterranean	\$21,500	Deiulemar Shipping		17/7
Alterego	74,047	1999	Huangpu Jul26-27	Worldwide	\$24,000	Worldlink	3-5 Mnths 100-1	27/7
Alabama	74,002	1998	Barcelona Jul 17-20	Singapore-Japan	\$23,000	Bunge		17/7
Gemstar	74,001	1999	Lanshan Jul 19-21	Far East	\$22,000	Chart Not Rep		18/7
Clipper emperor	74,000	2000	Aden Jul 30-31	Spore/Jpn Rge	\$21,000	Chart Not Rep		20/7
Jiu Long Feng	73,937	2001	Sual Jul 17-19	Japan	\$25,750	Asahi	via Indonesia	5/7
Szare Szeregi	73,850	1991	Dalian Aug 3-7	worldwide	\$20,000	Sinochart	11-13 months	28/7
Elinakos	73,751	1997	Hamburg Jul 27-30	UKCont	\$25,000	Norden Denmark		25/7
Elinakos	73,751	1997	Hamburg Jul 27-30	Worldwide	\$22,000	Deiulemar Italy	12-14 mnths	24/7
Babitonga	73,726	1997	Bremerhaven Jul 12-15	Middle East	\$23,500	Chart Not Rep	via Continent	10/7
Ocean Crystal	73,688	1999	Passero Jul 27-30	worldwide	\$24,750	Bunge	4-5 mnths	24/7
Great Loyalty	73,659	1999	Taichung Jul 14-16	Taiwan	\$22,000	HMM		14/7
Marietta	73,641	2004	Nagoya Jul 17-19	Singapore-Japan Range	\$23,250	Cargill	Via NoPac	10/7
Ju Da	73,603	2005	Aden Jul 30-31	China	\$21,750	Sinochart		31/7
Protefs	73,600	2004	Jorf Lasfar Aug 1-3	Taiwan	\$25,500	China Steel Express		25/7

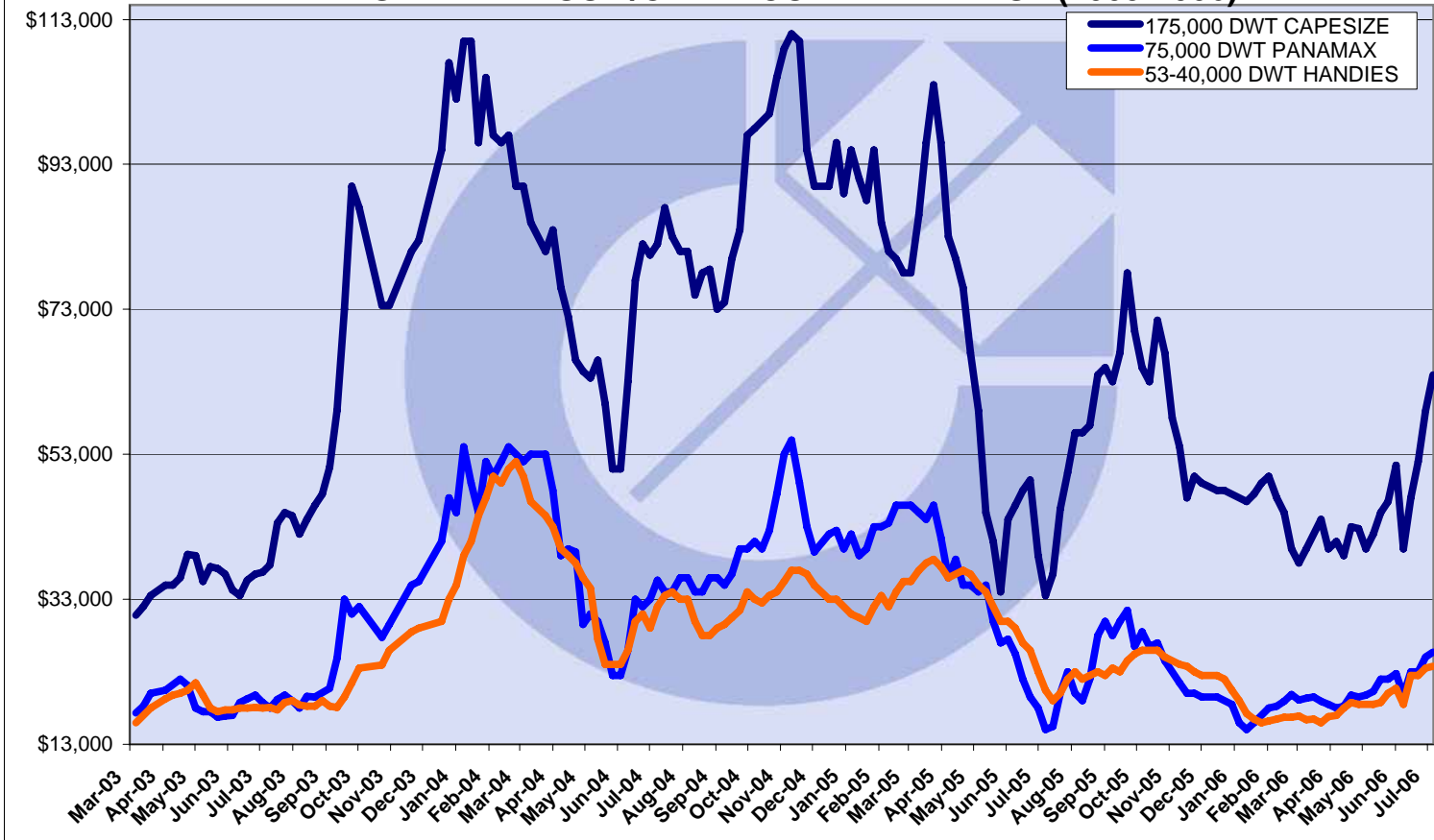
Huang Shan Hai	73,596	1998	Surabaya Jul 12-13	worldwide	\$22,500	STX Pan Ocean	4/6 months	7/7
Great Century	73,500	1999	Singapore Prompt	Worldwide	\$23,000	Chart Not Rep	3-5 Months	14/7
Great Ambition	73,500	1999	Fos Aug 2-6	worldwide	\$24,000	Armada Switzerland	4-5 months	21/7
Great Intelligence	73,391	2000	Haldia Spot	China	\$18,000	North China Lines		24/7
Ruby Crest	73,317	1997	Trincomalee Jul 19-23	China	\$23,000	Uniwell	via east coast India	7/7
Happy Clipper	73,200	2001	Antwerp Jul 10-14	Piombino	\$24,500	STX Pan Ocean	via Kookola	6/7
Happy Clipper	73,200	2001	Piombino Aug 6-7	worldwide	\$24,500	Chart Not Rep	4-6 months	31/7
Nicos L	73,193	2002	Passero Jul 21-22	Spore/Jpn Rge	\$24,000	Chart Not Rep		24/7
Great Glory	73,192	1997	Changjangkou Jul 16	Worldwide	\$22,000	Glory Wealth Qingdao	4-6 mnths	20/7
Nicos L	73,150	2002	Cape Passero Jul 20-28	Worldwide	\$22,500	Daeyang Shipping	4-5 Months	17/7
Drin	73,087	1996	Worldwide Dec 1-31	Worldwide	\$19,000	BHP Billiton NL	2 yrs	20/7
Waimea	73,048	1997	PMO Jul 23-25	China	\$19,000	Chart Not Rep		17/7
General Guisan	73,035	1999	HongKong Jul 16-20	Worldwide	\$22,750	CTM	4-6 Months	17/7
Alpha Happiness	73,000	1999	Portbury Jul 10-15	Singapore-Japan	\$23,000	STX Panocean		11/7
Luise Oldendorff	72,873	1994	El Dekheila prompt	Jorf Lasfar	\$20,000	Oldendorff Carriers		12/7
Coal Age	72,824	1997	Pylos Jul 24-28	Far East	\$25,000	STX Panocean Shpg		20/7
Hua Shan Hai	72,731	1998	Bin Qasim Jul 23-24	Singapore/Japan Range	\$20,850	Chart Not Rep		25/7
Miltiadis II	72,493	1999	Ravenna spot	PMO	\$23,500	Transgrain		12/7
Fu Min	72,437	1997	Missi Aug17-18	Spore/Jpn Rge	\$23,000	Hanjin Shppng Seoul	plus \$500,000 bal bon.	27/7
Ocean Pride	72,416	1997	Xingang spot	Singapore-Japan range	\$23,000	Armada	via NoPac	7/7
Salmas	72,345	1995	Bremen Jul 7-8	Egyptian Med	\$23,000	Egyptian Charterer	via St Lawrence	7/7
Vogevoyager	72,171	1996	Cape Passero Jul 24-26	Worldwide	\$24,250	Cosco		17/7
Voetrader	72,171	1996	Zhoushan spot	Spore/Japan Range	\$21,500	Louis Dreyfus France		25/7
GO Public	71,761	1993	Aviles Aug 10-15	worldwide	\$23,650	Armada Switzerland	4-5 days	25/7
Samjohn Light	71,756	1994	PMO Aug 2-4	Passero	\$19,900	Chart Not Rep		28/7
Oinoussian Legend	71,685	1997	Fos Jul 9-12	Skaw-Cape Passero	\$22,000	Azure		10/7
Esna	71,400	1998	Mobile Aug 1-10	worldwide	\$22,500	Chart Not Rep	plus \$450,000 bal bon.	21/7
Great Luck	71,399	1998	Annaba Jul 4	Aughinish	\$23,500	Transfield	via Trombetas	7/7
Fu Le	71,330	1998	Tubarao Aug 7-17	Taiwan	\$23,000	cse transport	plus \$500,000 bal bon.	24/7
Yuan Zi	71,298	1997	Vancouver Jul 31-Aug 5	Singapore-Japan	\$20,500	Louis Dreyfus	plus \$425,000 bal bon.	18/7
Humber	70,900	1982	Nantong Jul28-31	Skaw/Passero	\$20,000	Heinrich Hanno		27/7
Hsin Ho	70,829	1997	Hoping Jul 18-20	worldwide	\$23,000	Cosbulk	4/6 months	4/7
Royal Ocean	70,677	1995	Vado Jul 24-28	worldwide	\$23,000	Chart Not Rep	5 months	25/7
Cemtex Orient	70,600	1990	Haldia Jul 15-20	China	\$25,000	Chart Not Rep	via east coast India	6/7
Iguana	70,349	1996	Jorf Lasfar spot	Spain	\$21,250	Cargill	via Ponta da Madeira	7/7
Hanjin New Orleans	70,337	1993	Mobile Jul 27-29	Singapore-Japan	\$20,000	Chart Not Rep	plus \$400,000 bal bon.	17/7
Princess Vanya	70,329	1989	Brindisi Aug 4-6	worldwide	\$20,500	Deiulemar Italy	8-9 months	31/7
Gerasimos	70,296	1996	Dalian prompt	worldwide	\$19,750	Oldendorff Carriers	1 year	18/7
Full Comfort	70,181	1994	Mailao Aug 1-5	Singapore-Japan range	\$21,000	Panoceanic Bulk UK	2 laden legs	28/7
Powhatan	70,153	1995	South China Jul 25-30	worldwide	\$18,250	Swiss Marine	15/18 months	4/7
Navios Libra II	70,136	1995	Onahama Jul 27-30	Singapore-Japan range	\$22,000	Louis Dreyfus France		21/7
Powerful	70,083	1994	Kawasaki Jul 27-28	Singapore-Japan range	\$21,000	Cargill Geneva		28/7
Kronos	69,999	1996	PMO Jul 13-17	worldwide	\$20,000	North China Shipping	11/13 months	10/7
Gao Zhou Hai	69,963	1994	Passero Jul 27-29	worldwide	\$23,000	West Asia India	5-7 months	31/7
Teng Fei Hai	69,900	1995	Lanshan Spot	worldwide	\$23,000	Chart Not Rep	4-6 mnths	24/7
Irini	69,734	1988	Immingham Jul 21-23	Skaw/Passero	\$23,500	Clipper Denmark	0 2 LLegs	20/7

Four Sterling	69,616	1993	Xingang Prompt	PMO	\$19,800	ETA		14/7
Serene Star	69,512	1996	Gladstone Jul 13-15	Japan	\$25,000	Asahi		5/7
Anangel Progress	69,406	1989	Bilbao Spot	Atlantic	\$24,000	Pacific Carriers Sg	0 2-3 LLegs	20/7
Beauty Sea	69,365	1991	El Ferrol Jul 5	Skaw-Cape Passero	\$20,000	Augustea	2 laden legs	11/7
Scenery Sea	69,365	1991	Gresik Jul 30-31	Spore/Jpn Rge	\$26,500	Chart Not Rep		24/7
Big Wave	69,346	1989	Chiwan Jul 23-31	worldwide	\$19,100	Cobelfret	11-13 months trading	6/7
Antonis I Angelicoussis	69,346	1989	Carboneras Jul 14-15	Atlantic	\$21,000	Cobelfret	2 laden legs	10/7
Far Eastern Silo	69,338	1990	Taiwan Aug 2-3	worldwide	\$18,500	Transfield	11-13 Months	18/7
Prem Poorva	69,286	1994	Haldia Aug 10-20	China	\$25,000	Charterer not repored		28/7
Yerotsakos	69,220	1993	Shekou Jul 9-12	worldwide	\$23,250	Daeyang	3/5 months	7/7
Big Sky	69,189	1994	Japan Aug 5-15	worldwide	\$18,000	Bottiglieri	22-24 months	28/7
Seaflower	69,126	1995	PMO spot	worldwide	\$20,250	Cargill Geneva	3-5 months	3/7
Captain D. Gregos	69,091	1997	Lanshan Jul 23-25	worldwide	\$21,500	Cargill Geneva	4-6 months	25/7
Alexandra I	69,090	1994	Goa Aug 9-17	Singapore/Japan range	\$18,000	Hanjin Shppng Seoul		31/7
Cumbria	69,043	1994	Hibikinada Jul 8-9	Bin Qasim	\$23,500	Sinotrans	via NoPac	10/7
Shun Ji Xing	69,011	1983	Taiwan Jul 15-20	China	\$13,000	Cosco	via west coast Australia	7/7
Hellenic Sky	68,591	1994	Inchon Jul 25-30	Spore/Jpn Rge	\$21,000	Louis Dreyfus France		24/7
Sea Challenge	68,407	1987	Goa Aug 10-15	China	\$19,000	Chart Not Rep		21/7
Stoikos	67,359	1985	Inchon Jul 14-15	Worldwide	\$17,750	Bunge	4-6 Months	17/7
Turnberry Glory	67,232	1987	Mundra Jul 10-12	Bin Qasim	\$16,850	Shadab		12/7
Sea Pride	66,982	1983	PMO Aug 2-10	Passero	\$15,500	Bunge Rome		26/7
Amadeus	66,919	1984	Aughinish Jul 8-14	Aughinish	\$17,000	Oldendorff Carriers		12/7
Ethnos	66,733	1984	Marina di Carrara Jul-11	Skaw-Cape Passero	\$18,500	Augustea	2 Laden Legs	19/7
Agios Nikolaos II	66,157	1976	Nemrut Bay Jul 22-28	Aden/Pmo	\$16,000	Martrade & Transport		20/7
Platanos	65,702	1990	PMO Jul 16	Continent	\$16,000	Bunge	0 retro	20/7
Sweet Lady II	65,592	1981	Paranagua Aug 01-05	Far East	\$17,500	Glencore	plus \$475,000 bal bon.	14/7
Sundance II	65,224	1983	Amsterdam Jul 7-12	South Korea	\$17,000	Agrenco	via east coast South America	10/7
Ledra	65,190	1980	Passero prompt	Amsterdam	\$16,500	Cargill Geneva		21/7
Mani P	65,132	1983	Hong Kong Aug 5-10	Hong Kong	\$17,200	Chart Not Rep		31/7
Go Faith	65,125	1984	Paradip Aug 10-15	China	\$21,000	Chart Not Rep		28/7
Samjohn Captain	65,051	1985	Aughinish Jul 15-20	Singapore-Japan Rge	\$22,350	STX Pan Ocean	via Baltic	4/7
Theofano M	64,976	1982	Ravenna Jul 30-Aug 2	Aden-PMO	\$19,250	Toepfer		28/7
Dimitris Perrotis	64,933	1984	Aughinish Jul 30-31	Black Sea	\$20,000	Oldendorff Carriers		26/7
Popi S	64,916	1982	Black Sea Jul 15-17	Med	\$18,000	Bunge Geneva	2 laden legs	3/7
Ermis	64,379	1984	North China Jul 28-31	Black Sea	\$17,000	Oldendorff Carriers		25/7
Vassilios	64,282	1989	Gibraltar Jul 12-14	Far East	\$18,300	North China Lines	2-3 Laden Legs	14/7
Cabanos	64,255	1989	Cape Passero Jul 24-31	worldwide	\$19,000	Chart Not Rep	3-5 months	18/7
Wadi Sudr	64,214	1994	Fukuyama Jul 17-19	Singapore-Japan	\$20,000	Hanjin Shipping		18/7
Wadi Al Arab	64,214	1995	Cape Passero prompt	Far East	\$19,250	Cargill	1-2 laden legs	18/7
Panormos Trader	63,942	1983	USG Jul 22-25	Mediterranean	\$22,000	Bunge		14/7
Captain George L	63,920	1984	Amsterdam Aug 2-8	worldwide	\$15,900	Chart Not Rep	11-13 months	26/7
Sea Charm	63,870	1982	La Cornuna Jul 18-20	sk-passero	\$17,000	Chart Not Rep		20/7
Fratzescos M	63,408	1981	PMO Jul26-28	China	\$11,250	Chart Not Rep		27/7
Tina M	63,284	1982	Gibraltar spot	Aqaba	\$18,000	Chart Not Rep	plus \$275,000 bal bon.	26/7
Father F	63,212	1981	Jintang Jul 26-28	Mediterranean	\$18,000	Chart Not Rep		28/7
Nikos O	63,185	1982	Shanghai Jul 25-30	Skaw/Passero	\$18,250	RMC Group plc		25/7
Ioannis M	61,451	1979	Greece Sep 1-10	Skaw-Passero	\$14,600	Chart Not Rep		21/7
Talisman	56,019	2006	Chiwan Jul 28-Aug 02	Worldwide	\$24,500	OBC	4-6 Months	17/7
Yasa Ozcan	55,924	2006	Mumbai Spot	China	\$18,000	Chart Not Rep		17/7
Maritime Newanda	55,820	2005	Lianyungang spot	India	\$24,150	Chart Not Rep		21/7

Mimi Selmer	55,711	2005	Thailand spot	south China	\$26,000	Chinese	via Indonesia	4/7
Sibulk Quality	55,500	2005	East Coast India spot	China	\$19,500	Chart Not Rep		12/7
Ikan Acapulco	55,500	2006	West Africa Aug 1-10	worldwide	\$24,000	Armada Switzerland	5-7 months	21/7
Fructidor	55,000	2005	Xingang Jul 19-21	India	\$24,000	Chart Not Rep		14/7
Fructidor	55,000	2005	Jintang Jul 26-30	ECI	\$22,000	Sinochart		26/7
Cos Orchid	55,000	2006	USG Aug 1-5	China	\$25,850	Noble Chart UK		31/7
Akmi	53,806	2003	Haldia spot	China	\$23,000	Chinese		4/7
Annou GO	53,694	2006	New Plymouth Jul 25-30	Far East	\$24,500	Daiichi	plus \$250,000 bal bon.	7/7
Arya Payk	53,565	2006	Goa spot	China	\$16,000	Uniwell	trip	6/7
Ikan Salmon	53,553	2003	Rizhao Spot	Nigeria	\$25,750	Oldendorff	via Taiwan	7/7
CMB Biwa	53,505	2002	Port Harcourt Jul 20-25	worldwide	\$24,750	Chart Not Rep	3-5 months	12/7
Delmar	53,500	2006	Brazil spot	Red Sea	\$23,000	NYK	plus \$360,000 bal bon.	4/7
Delfa	53,500	2005	Texas gulf Jul 26-30	wccam	\$20,000	Armada Switzerland		24/7
Navios Astra	53,400	2006	Port Harcourt Jul 7-15	Singapore-Japan Rge	\$24,500	Chart Not Rep	via West Africa	4/7
C Duckling	53,098	2002	Alicante spot	Pakistan	\$25,800	STX Panocean Shpg		25/7
Nord Enterprise	53,000	2006	Imabari Jul 5-7	options	\$25,500	Chart Not Rep		7/7
Nord Mariner	53,000	2006	China Aug 20-30	worldwide	\$20,000	Chart Not Rep	2 years	26/7
Kang Chang	52,828	2001	Lianyungang Jul 14-16	Atlantic	\$25,500	Chart Not Rep		10/7
Pinar-K	52,455	2002	East Mediterranean spot	worldwide	\$23,250	Cargill	5-7 months	18/7
Lindos	52,450	1990	Fujairah spot	worldwide	\$15,600	Martrade & Transport	6-9 months	12/7
Marylisa V	52,428	2003	N China Spot	India	\$25,000	Chart Not Rep		20/7
Jaeger	52,400	2004	Rizhao Jul 1-10	worldwide	\$25,000	Chart Not Rep	3-5 months trading	6/7
F Duckling	52,400	2000	Rizhao Jul 12-20	Angola	\$28,000	Atlas	via north China	4/7
Tenshu Maru	52,291	2004	Maputo Jul 15-20	Spore/Jpn Rge	\$25,000	Chart Not Rep		3/7
Ocean Breeze	52,226	2006	Cebu Aug 1-10	Worldwide	\$21,000	Chart Not Rep	11-13 mnths	20/7
Nikolas	52,200	2005	Lanshan Jul 22-23	W Africa	\$25,250	Atlas Chtg Hburg		20/7
Furness Timika	52,100	2001	Lianyungang Spot	Singapore-Japan	\$25,500	STX Panocean Shipping	2-3 Months	14/7
D Duckling	52,068	2001	Juntang Spot	USG	\$25,000	Daewoo Corp		20/7
Navios Achilles	52,063	2001	Chennai spot	China	\$18,000	Chart Not Rep		12/7
JBU Orient	52,000	2006	Japan Oct	worldwide	\$19,500	Chart Not Rep	2 years trading	5/7
Tai Harvest	51,008	2002	Brisbane Jul 25-30	India	\$24,000	HMM	plus \$300,000 bal bon.	12/7
Eleni M	50,992	2001	Xingang Jul 16-19	worldwide	\$25,000	PCL		10/7
Ocean President	50,906	2001	Tuapse Jul 18-20	Southeast Asia	\$21,500	Fayette		14/7
RM Manahaim	50,619	2004	Ko Sichang spot	China	\$20,000	Eitzen Bulk		11/7
Kaity L	50,457	2003	Goa Spot	China	\$16,750	Noble Chart		20/7
Kaity L	50,457	2003	PMO Spot	Worldwide	\$21,000	Koreans	14-16 Months	19/7
Darya Gyan	50,300	2001	South China prompt	Malaysia	\$24,000	Star	via Australia	6/7
Falcon	50,296	2001	East Med Jul 1- 5	SE Asia	\$18,000	Fayette Intl		3/7
Navios Vector	50,296	2002	US Gulf spot	Singapore-Japan	\$25,000	South Korean charterer		5/7
Xanadu	50,169	2001	USG spot	Singapore-Japan	\$25,000	Hanjin Shipping		11/7
Shangor	48,910	2001	Ko Sichang Jul 14-16	worldwide	\$24,000	S Korean Charterer	4/5 months	10/7
Alona	48,640	2002	China spot	Thailand	\$25,000	Chart Not Rep	via Indonesia	4/7
Medi Trader	48,225	1999	Baltic spot	UK Cont	\$20,000	Oldendorff	via South Norway	5/7
Sparrow	48,225	2000	new Mangalore Jul 22-24	China	\$16,750	Solebay		20/7
Marylebone	48,170	2001	USG Jul 31	Spore/Jpn Rge	\$22,500	Western Bulk Oslo	02 LLegs	20/7
Arctic Trader	48,170	1994	Middle East Gulf Aug 10-15	Worldwide	\$19,000	Scandinavians	11-13 Months	19/7
Maritime Diamond	47,574	1995	Chennai Jul 26-30	China	\$18,500	Chart Not Rep		24/7
Blest Marine	47,115	1997	Mumbai Spot	China	\$15,000	Chart Not Rep		20/7
Ace Eagle	47,000	1998	Kuantan Jul 15-17	Singapore-Japan	\$25,000	Chart Not Rep		14/7

Top Ridge	46,765	1998	Visakhapatnam Jul 11-14	Far East	\$21,500	Chart Not Rep	via Haldia	7/7
Glarus	46,513	2001	Singapore spot	South China	\$26,500	Eitzen	via Indonesia	10/7
Brother Glory	46,211	1998	USG Jul 25-30	Atlantic	\$22,000	Armada Switzerland	4-6 months	26/7
Top Wing	46,013	1998	Sao Sebastiao spot	UK Cont	\$20,400	Bunge	plus \$300,000 bal bon.	4/7
Glarus	46,000	2001	Singapore spot	Thailand	\$27,250	D'Amico	via Indonesia	6/7
Chrysoula S	45,742	1996	USG Spot	Worldwide	\$22,000	MUR	4-6 Months	14/7
Emerald	45,588	1998	Japan Aug 1-10	worldwide	\$20,000	Oceanbulk	11-13 months	26/7
Paige	45,518	1994	Singapore spot	east coast India	\$19,000	Armada		12/7
Anton Topic	45,496	1996	Continent spot	Turkey	\$21,000	Eitzen Bulk		11/7
Elena Topic	45,333	1999	Tampa spot	worldwide	\$21,500	Cargill Geneva	3-5 months	3/7
Alfred Oldendorff	45,320	1996	Missi spot	Singapore-Japan range	\$24,000	STX Panocean		21/7
Rosina Topic	45,251	2000	New York spot	Atlantic	\$21,750	Western Bulk Carriers	3/5 months	4/7
Genco Marine	45,222	1996	Continent spot	US Atlantic coast	\$21,000	EMR		11/7
Asian Glory	45,194	1996	North China Jul 15-20	worldwide	\$21,000	STX Pan Ocean	5-7 months trading	5/7
Yong An 3	44,129	1996	USG Spot	Worldwide	\$21,250	Probulk Singapore	3-5 mnths	20/7
Star Pollux	44,000	1996	Maputo Aug 3-8	Med	\$20,500	MUR Denmark		26/7
Prabhu Yuvika	43,648	1994	Fangcheng Jul 21-23	China	\$22,500	Chart Not Rep		20/7
Iran Abouzar	43,499	1986	PMO spot	PMO-Singapore	\$15,000	Martrade & Transport	2 laden legs	12/7
Nena C	43,188	1994	east coast Mexico spot	worldwide	\$22,000	Chart Not Rep	2-4 months	31/7
Star Sea Rainbow	42,717	1998	Canakkake spot	PMO	\$20,000	Diler Shipping	via Black Sea	7/7
Aliki L	42,592	1985	Black Sea Aug 1-5	India	\$21,000	Chart Not Rep		26/7
Marybelle	42,552	1987	Egyptian Med Jul 9/10	worldwide	\$18,500	Oldendorff	4/6 months	7/7
Velebit	42,249	1990	North Atlantic Aug 10-31	Atlantic	\$17,250	Daeyang Shipping	11-13 Months	14/7
Omiros	42,187	1987	Gibraltar Spot	UKC Med	\$17,000	Chart Not Rep		20/7
Solon	42,183	1987	Ventspils prompt	Dar es Salaam	\$20,000	Dreyfus	via Continent	4/7
Leros	42,083	1985	Cannakale Jul 17-20	USG	\$14,300	Western Bulk		14/7
Pacific Pioneer	41,971	1992	Durban Jul 22-25	Far East	\$22,000	MUR		7/7
Seawind	41,377	1985	East Med spot	USG	\$16,000	Chart Not Rep		11/7
Diana	41,180	1997	Key West spot	East Med	\$19,000	Egyptian charterer	via US Gulf	5/7
Danial	40,478	1985	US Gulf spot	Mediterranean	\$19,500	Chart Not Rep		18/7
Maro L	40,048	1985	Ghent Jul 9-12	USAC	\$18,200	Chart Not Rep	Trip	6/7
Triada	38,434	1984	Piraeus spot	India	\$16,500	Chart Not Rep		31/7
Springwood	37,694	1984	PuertCabello Jul 7-12	north coast South America	\$21,000	Atlas	via north coast South America	7/7
BMS Tourloti	37,662	1984	Hamburg spot	USAC	\$15,250	Western Bulk Carriers	via St Petersburg	4/7
Anna L	37,600	1984	West Africa spot	Middle East Gulf	\$16,750	Brobulk	via east coast South America	6/7
Tai Cang Hai	37,545	1985	Canakale Jul 25-27	Aden-Japan range	\$23,500	Chart Not Rep		25/7
Great Summit	33,000	2004	East Med spot	India	\$18,500	Agroship		12/7
Irene E M	32,025	1980	South Brazil Spot	Middle East Gulf	\$22,000	Brobulk	trip	6/7
East Tender	28,488	2002	West Africa Jul 4	India	\$15,500	Chart Not Rep		12/7
Cape Nelson	28,437	2001	Thailand Jul 18-20	US West Coast	\$15,750	Chart Not Rep		19/7
Selendang Mayang	28,390	1997	Huangpu spot	Singapore/Japan range	\$13,500	Armada Switzerland		25/7
Sea Harvest	28,294	2000	Kunsan Jul 11-13	Singapore-Japan range	\$15,500	STX Pan Ocean	2 laden legs	10/7
Sanko Eternal	27,917	1996	Dampier Jul 27-30	Singapore-Japan range	\$14,000	Armada Pacific	plus \$100,000 bal bon.	7/7
Hanjin Houston	27,209	1995	Gove Jul 25-30	Indonesia	\$15,200	Chart Not Rep	plus \$140,000 bal bon.	14/7
Royal Bulker	27,079	1996	Singapore spot	Singapore-Japan range	\$13,500	Armada Pacific	2 laden legs	7/7
Captain Aysuna	26,914	1986	Brownsville Aug 3-5	Med	\$16,900	Chart Not Rep		31/7
Lucky Transporter	26,650	1984	Mombasa Jul 24-30	Gibraltar	\$13,500	Island View Durban		20/7
Osios David	23,791	1982	Las Palmas spot	Skaw-Cape Passero	\$10,700	STX Pan Ocean	via River Plate	5/7

AVERAGE EARNINGS T/C TRIP CONT - FAR EAST (2003-2006)



AVERAGE EARNINGS T/C TRIP FAR EAST - CONT (2003-2006)

