

NAME	DWT	BLT	DELY	REDELY	RATE	CHARTERER	NOTES	DATE
Hanjin Melbourne	186,040	1987	Zhousan 1-10 Oct	Continent	\$36,000	Cargill Geneva		28/9
Morgiana	185,937	1988	China 21-23 Sep	Worldwide	\$50,000	Sk Shipping Korea	1 Yrs	8/9
Carpe Diem I	181,756	1985	R Bay 21-30 Sep	Continent	\$31,000	Swissmar	plus \$865,000 Bal Bon	7/9
Mineral Monaco	180,263	2005	Qingdao 22-24 Sep	South China	\$64,000	BHP Billiton NL		21/9
Cape Flamingo	180,201	2005	Far East 01-31 Oct	Worldwide	\$62,000	TMT		14/9
Cape Condor	180,181	2004	Passero 28-30 Sep	worldwide	\$63,500	TMT Korea	8-10 months	29/9
Luigi D'Amato	180,000	2005	S Korea 21-30 Sep	Worldwide	\$60,000	SWISSMAR	4-6 months	8/9
Quorn	179,869	1996	luojing 08-10 Oct	China	\$58,000	Rio Tinto		29/9
Irongate	179,618	1982	Beilun 26-28 Sep	China	\$60,000	Rio Tinto	via West Australia	22/9
Bright Century	178,739	1997	Kashima 12 Aug	China	\$57,000	Kleimar		7/9
Shagang First	177,656	2006	Rotterdam 02-05 Oct	Worldwide	\$55,000	Shagang Shiping		15/9
Southern Explorer	177,493	2002	Rotterdam 05-10 Oct	China	\$86,000	Source Link		15/9
Lowlands Orchid	176,193	2005	Kashima 19-21 Sep	Gijon	\$35,000	BHP Billiton NL	55 Days	8/9
An May	176,085	2005	Fos 24-26 Sep	Skaw/ Passero	\$62,000	SK Shipping Korea	transatlantic round voyage	19/9
Cape Saturn	175,882	2003	China 1-15 Oct	worldwide	\$42,000	BHP Billiton NL	4 years	19/9
Great Challenger	175,279	2005	Rizhao 25-27 Sep	Continent	\$38,500	C Transport Maritime		21/9
CHS Creation	175,000	2006	Shanghai 21-30 Sep	worldwide	\$62,000	EDF Trading London	5-7 months	13/9
Glory Wealth TBN	175,000	2007	Waigaoqiao Oct 1-Dec 31	worldwide	\$48,000	Transfield	3 Years	18/9
Bao Shan	174,630	2006	Kaohsiung Spot	Skaw/Passero	\$40,000	Sk Shipping Korea		12/9
Ocean Victory	174,148	2005	Beilun 27 Aug	China	\$59,850	Daiichi Japan		14/9
Giuseppe Lembo	172,632	1999	Skaw 15-20 Sep	Skaw/Passero	\$55,000	Sk Shipping Korea	0 TA RV	12/9
Cape Venus	172,612	1996	Fancheng 4-6 Sep	China	\$51,500	Glory Wealth Qingdao		1/9
Mona Pegasus	172,571	2000	Mizushima 28-30 Sep	Skaw Cape Passero	\$40,000	Kleimar	via Indonesia	22/9
Mineral Poterne	172,091	1997	Nagoya 12-15 Sep	worldwide	\$60,000	Swissmar		4/9
Mona Century	172,036	2000	Xingang 7-12 Oct	worldwide	\$59,000	TMT Korea	8-12 months	28/9
Anangel Odyssey	172,000	2007	Daewoo 18-20 Sep	China	\$60,000	BHP Billiton NL		14/9
Anangel Destiny	171,997	1999	China 28-30 Sep	China	\$64,000	BHP Billiton NL		19/9
Manasota	171,995	2004	Kwang Yang 08-09 Sep	Far East	\$47,000	Sk Shipping Korea	0 2 LLegs	11/9
Arethousa	171,779	1999	Dunkirk Oct 3-4	China	\$87,000	Shougang		18/9
Thalassini Niki	171,670	2005	Caofedian 10-15 Sep	China	\$50,000	BHP Billiton NL	plus Bal Bon	11/9
Cic Elli S	171,218	2003	Far East 20-25 Oct	Worldwide	\$60,000	Cargill Geneva	4-6 Months	12/9
Mineral Azalea	171,199	1999	China 21-30 Sep	China	\$60,000	BHP Billiton NL		14/9
Sumihou	171,071	1996	Beilun 25-27 Sep	Worldwide	\$59,000	Cargill Geneva	4-6 months	8/9
Setsuyo Star	170,808	1985	China 1-10 Oct	worldwide	\$47,500	STX Pan Ocean		27/9
Pitsa D	170,188	2002	Immingham 20-21 Sep	Skaw/Passero	\$58,000	Sk Shipping Korea	0 TA RV	11/9
CSK Grandeur	170,170	2000	Qingdao 1-10 Oct	Japan	\$62,000	K Line	via east coast Australia	26/9
Ce-Duke	170,100	2001	Passero 25-30 Sep	Far East	\$62,500	Chart not rep		28/9
CHS Splendor	170,094	2006	Lanshan 20-25 Sep	China	\$64,000	BHP Billiton NL		19/9
Golden Wing	170,082	1997	Sines 7-9 Sep	Passero	\$63,000	Hanjin Shipping Seoul		5/9
Cape Pioneer	170,000	2005	China 20-30 Sep	China	\$60,000	BHP Billiton NL		14/9
Tian Yang Hai	169,999	1997	Rizhao 2-3 Sep	China	\$47,000	BHP Billiton NL		5/9
Tian Yang Hai	169,999	1997	Beilun 28-30 Sep	China	\$60,000	BHP Billiton NL		19/9
Front Climber	169,177	1991	Far East 01-31 Dec	Worldwide	\$50,000	Cargill Geneva	12 Mnths	15/9
Front Climber	169,177	1991	Shanghai 5-10 Oct	China	\$50,000	BHP Billiton NL		29/9
Front Breaker	169,146	1991	Kwangyang spot	China	\$62,000	Chart not rep	via West Australia	22/9
Front Striver	169,000	1992	Singapore 05-07 Sep	Skaw/Passero	\$40,000	Kleimar		6/9
Heythrop	165,729	1996	Qingdao 01-07 Oct	Worldwide	\$60,000	SWISSMAR		14/9
Thalassini Axia	164,796	1996	worldwide Jan 07	worldwide	\$52,000	Ctransport	12 months	22/9
Thalassini Axia	164,796	1996	worldwide Jan 07	worldwide	\$46,000	Glencore	12 months	22/9
Thalassini Kyra	164,218	2002	UBU 12-20 Sep	Continent	\$57,000	Kleimar	plus \$1,200,000 Bal Bon	8/9

<b>Iron Beauty</b>	164,218	2001	Far East 1 Oct-30 Nov	worldwide	\$52,000	<b>Corus UK Ltd</b>		29/9
<b>Erradale</b>	163,554	1994	Hong Kong 01-10 Oct	Worldwide	\$58,000	<b>Constellation Energy</b>	4-6 Months	12/9
<b>Erradale</b>	163,554	1994	Hong Kong 30 Sep	China	\$63,000	<b>Rio Tinto</b>	via West Australia	22/9
<b>Cape Eagle</b>	161,475	1993	Ijmuiden 10-15 Oct	worldwide	\$66,500	<b>TMT Korea</b>	3-4 months	13/9
<b>Martha Verity</b>	157,991	1995	South Japan 23-25 Sep	Eregli	\$40,000	<b>Erdemir</b>	via Hay Point	22/9
<b>Silver Clipper</b>	151,450	1993	Dalian Xdd prompt	worldwide	\$55,000	<b>Swissmar</b>	5-7 months 5.5-7	19/9
<b>C H S Moon</b>	151,226	1990	Shanghai 24-26 Sep	Worldwide	\$51,000	<b>North China Shanghai</b>		14/9
<b>Bosporus</b>	150,973	1995	S Japan 01-05 Oct	China	\$41,500	<b>BHP Billiton NL</b>		7/9
<b>Alpha Action</b>	150,790	1994	China 15-20 Oct	worldwide	\$45,000	<b>NYK Line Japan</b>	23-25 months	29/9
<b>Nordstar</b>	150,661	1983	Zhoushan 28 Sep-10 Oct	Worldwide	\$27,500	<b>Deiulemar Italy</b>	12 Mnths	15/9
<b>Arimathian</b>	149,782	1994	Xingang 6-7 Oct	worldwide	\$50,000	<b>Mosk Tokyo</b>	4-6 months	28/9
<b>C. Koreana</b>	149,516	1990	Passero 12-14 Sep	Passero	\$52,000	<b>Hanjin Shppng Seoul</b>		14/9
<b>Cape Australia</b>	149,512	1990	Mailao 12-15 Sep	Koper	\$33,000	<b>Cobelfret</b>		5/9
<b>York</b>	149,503	1990	Dunkirk prompt	Skaw/Passero	\$49,000	<b>SK Shipping Korea</b>	transatlantic round voyage	28/9
<b>Pos Ambition</b>	149,330	1992	Qinghuangdao 21-23 Sep	Flushing	\$29,500	<b>SWISSMAR</b>		12/9
<b>Hebei Forest</b>	149,211	1989	Rizhao 2-4 Sep	Passero	\$32,000	<b>Cobelfret</b>		1/9
<b>Cape America</b>	149,000	1991	Beilun 12-14Sep	Far East	\$42,000	<b>BHP Billiton NL</b>	plus Bal Bon	11/9
<b>Suzaku</b>	148,535	1994	Ko Sichang 4-5 Sep	Japan	\$31,000	<b>Daiichi Japan</b>		4/9
<b>Cape Athos</b>	139,469	1981	South Korea 5-7 Oct	South Korea	\$30,000	<b>HMM</b>	via Madras	22/9
<b>Sunrise I</b>	138,500	1981	Zhangjiagang 16-18 Sep	Rotterdam	\$25,000	<b>Chart not rep</b>		14/9
<b>Mercedes</b>	133,357	1981	Kaohsiung 10-15 Sep	Taiwan	\$28,000	<b>Sk Shipping Korea</b>		7/9
<b>Eridge</b>	122,792	1993	Kaohsiung Aug 28	worldwide	\$43,000	<b>Swiss Marine</b>	3.5- 5.5 months	18/9
<b>Duhallow</b>	122,774	1993	Beilun 7-10 Oct	Kaohsiung	\$42,500	<b>China Steel Express</b>		29/9
<b>Vancouver Spirit</b>	103,203	1992	Singapore 10-20 Sep	Worldwide	\$25,200	<b>Sempre UK</b>	5 Yrs	12/9
<b>Amore Mio</b>	103,203	1993	Singapore 20-30 Sep	Worldwide	\$25,200	<b>Sempre UK</b>	5 Yrs	12/9
<b>Golden Sea</b>	89,127	1982	Rotterdam 22-29 Sep	Misurata	\$26,000	<b>Medmar</b>	via Narvik	22/9
<b>Orange Truth</b>	83,051	2006	Kaohsiung 19-21 Sep	Taiwan	\$31,500	<b>Uming Marine</b>		15/9
<b>Pedhoulas Trader</b>	82,962	2006	Lisbon 08-11 Sep	Skaw/Passero	\$30,500	<b>Oceanbulk</b>		8/9
<b>Medi Hong Kong</b>	82,800	2006	PMO 26-30 Sep	China	\$28,000	<b>Chart not rep</b>		26/9
<b>Yasa Pioneer</b>	82,000	2006	Goa 16-20 Sep	China	\$30,750	<b>Glory Wealth Qingdao</b>		6/9
<b>An Ho</b>	77,834	2004	Ennore 21-22 Sep	China	\$35,000	<b>Chart not rep</b>	via EC India	22/9
<b>YM Rightness</b>	77,684	2004	Ijmuiden 11-14 Sep	Med	\$33,500	<b>Bottiglieri</b>		6/9
<b>YM Rightness</b>	77,684	2004	Hamburg 01-15 Oct	Worldwide	\$27,000	<b>Chart not rep</b>		14/9
<b>Nord Jupiter</b>	77,171	2006	Xiamen 2-4 Sep	Hawaii	\$26,000	<b>Cobelfret</b>		4/9
<b>Thalassa</b>	76,945	2003	Yokohama 25-27 Sep	Spore/Jpn Rge	\$39,500	<b>Cargill Geneva</b>		19/9
<b>Ariana</b>	76,931	2005	HongKong 20-30 Sep	Aden/Pmo	\$31,250	<b>Chart not rep</b>		7/9
<b>Asteriks</b>	76,801	2005	Bilbao 3-5 Sep	China	\$34,500	<b>Pioneer Metals HK</b>		1/9
<b>Betis</b>	76,801	2004	Mundra 29-30 Sep	China	\$27,000	<b>Chart not rep</b>	via India	25/9
<b>Ariana</b>	76,759	2005	worldwide 1 Dec-31 Jan	worldwide	\$26,000	<b>Torm</b>	2 Yrs	13/9
<b>Good Hope Max</b>	76,739	2005	Caofeidian 5-10 Sep	El Ferrol	\$30,000	<b>Sinochart</b>		1/9
<b>Oinoussian Lady</b>	76,704	2004	Immingham 30 Sep-4 Oct	sk-passero	\$29,000	<b>SK Shipping Korea</b>	transatlantic round voyage	28/9
<b>Osmarine</b>	76,662	2006	Ulsan 27-30 Sep	China	\$40,000	<b>Chart not rep</b>		21/9
<b>Navios Orbiter</b>	76,634	2004	Singapore 10-15 Sep	Atlantic	\$32,000	<b>Cargill Geneva</b>	4-6 months	4/9
<b>Cse Harmony Express</b>	76,634	2002	Xingang Prompt	Japan	\$34,000	<b>Hanjin Shppng Seoul</b>		15/9
<b>CSE Fortune Express</b>	76,634	2002	Hadong 4-6 Oct	Far East	\$32,000	<b>Drefus</b>	via NoPac	26/9
<b>Double Prosperity</b>	76,633	2005	Passero Prompt	Worldwide	\$34,800	<b>Chart not rep</b>	5-7 Mnths	15/9
<b>Maple Valley</b>	76,633	2005	Passero 14-17 Sep	Worldwide	\$30,000	<b>Giuseppe Bottiglieri</b>	12 Months	12/9
<b>Double Prosperity</b>	76,633	2005	Cape Passero 18 Sep	Taiwan	\$33,000	<b>China Steel Express</b>	via EC South America	22/9
<b>Maritime Suzana</b>	76,619	2005	Valencia 16-20 Sep	Skaw/Passero	\$33,500	<b>Klaveness Norway</b>		14/9

Maple Valley	76,608	2005	Cape Passero 15 Sep	worldwide	\$32,000	Glory Wealth	4-6 months	22/9
Cmb Italia	76,602	2005	Bayuqan 18-22Sep	Sual	\$29,000	Farengo Beijing	plus Bal Bon	11/9
Bahia	76,600	2004	PMO 18-20 Sep	Worldwide	\$32,500	Cetragpa	3-5 Mnths	15/9
Ocean Lily	76,585	2006	Butterworth 2-4 Oct	worldwide	\$32,000	Norden Denmark	4-6 months 1st leg	28/9
Chris newbuilding 2006	76,500	2006	Imabari 1-15 Nov	worldwide	\$26,000	Cargill Geneva	2 years	13/9
Ajax	76,500	2006	Kwang Yang 17-18 Sep	Spore/Jpn Rge	\$33,000	Chart not rep		13/9
Achilles	76,500	2004	Qingdao 07-10 Sep	Taiwan/Hk	\$30,000	Cosco Tianjin		7/9
Panstar	76,500	2005	Worldwide 01Nov-31Dec	Worldwide	\$29,800	Fratelli D'Amato Rom	14-16 Mnths	6/9
Nord Mercury	76,500	2004	Dunkirk 21-24 Sep	UK Cont	\$36,000	Norden Denmark		15/9
Red Lily	76,500	2004	Ghent prompt	China	\$33,500	Pacific Bulk		4/9
Panstar	76,500	2005	Sparrows point 12-19 Sep	China	\$28,000	Chart not rep	plus \$400,000 Bal Bon	8/9
Medi Vitoria	76,500	2004	USG 21-30 Sep	Far East	\$31,000	Chart not rep	plus \$575,000 Bal Bon	14/9
Centurion	76,500	2005	H.C.M. City 12-14Sep	Spore/Jpn Rge	\$34,000	Chart not rep	plus Bal Bon	11/9
Pos Eternity	76,498	2005	Fangcheng 25-27 Sep	South Korea	\$32,500	C and Shipping	via Indonesia	25/9
Amigo	76,324	1985	Piraeus spot	China	\$25,000	Chart not rep	via Black Sea	26/9
Mineral Star	76,300	2005	Hoping 10-12 Sep	Spore/Jpn Rge	\$29,000	Mosk Line Tokyo		7/9
I kan Kembong	76,297	2005	Goa 18-20 Sep	China	\$32,000	North China Lines		7/9
Red Gardenia	76,294	2005	Masinloc 7-13 Sep	Far East	\$31,500	Chart not rep		5/9
Hebei Arrow	76,284	1985	Upriver Sep-6	Skaw	\$24,500	Alfres C Toepfer	plus \$650,000 Bal bon	25/9
Mulberry Paris	76,282	2004	Kakogawa 18-20Sep	Spore/Jpn Rge	\$32,000	Chart not rep	plus Bal Bon	11/9
Anthemis	76,150	2006	Cape Passero 5-20 Oct	worldwide	\$30,500	North China Shipping	1 year's trading	26/9
Efrossini	76,015	2003	Portbury spot	Far East	\$31,000	Transgrain Singapore		5/9
Clara	76,000	2006	Jakarta 2-7 Oct	Skaw/Passero	\$34,500	Toepfer	50-60 days	29/9
Red Seto	75,996	2002	Beilun 21-30 Sep	worldwide	\$36,000	Cosco Qingdao	4-6 months	13/9
Torm Rotna	75,971	2001	New Orleans 12-17 Oct	Spore/Jpn Rge	\$28,500	BUNGE GENEVA	plus \$550,000 Bal bon	29/9
Pansofia	75,955	2001	Qingdao 05-08 Sep	Spore/Jpn Rge	\$31,500	Chart not rep		7/9
Nord Venus	75,949	2005	Santander 5-6 Sep	China	\$32,000	SK Shipping Korea		4/9
Loch Maree	75,845	2004	SW Pass 10-15 Sep	worldwide	\$28,000	Chart not rep	plus \$600,000 Bal Bon	5/9
Lotus Blossom	75,804	2005	Mississippi River 1-8 Oct	Singapore Japan rge	\$29,500	NYG	plus \$585,000 Bal bon	25/9
I kan Belanak	75,776	2005	Hamburg 13-15Sep	UKCont	\$31,000	Clipper Denmark	plus Bal Bon	11/9
Atlantic Horizon	75,709	2006	Santos 18-20 Sep	Taiwan	\$33,500	China Steel Express	plus \$700,000 Bal Bon	6/9
Cmb Florentina	75,624	2005	Passero 24-26 Sep	Worldwide	\$30,000	STX Panocean Shpg		14/9
Longdar	75,590	1983	Ravenna prompt	Aden/PMO	\$33,000	Chart not rep		28/9
Tianjin Pioneer	75,500	2005	xinsha 26-30Sep	Worldwide	\$30,000	Hanjin Shppng Seoul	14-16 Mnths	11/9
Orsolina Bottiglieri	75,500	2001	S China 21-30 Sep	Worldwide	\$34,000	Norden Denmark	5-7 Months	12/9
Tianjin Pioneer	75,500	2005	xinsha 26-30 Sep	Continent	\$36,000	Glory Wealth Qingdao		21/9
Rose Atlantic	75,500	2005	Gydnia 26-30 Sep	UK/Cont	\$32,000	Cos Bulk	plus \$50,000 Bal bon	21/9
Fujian	75,399	1996	zhangjiang 25-28 Sep	worldwide	\$26,250	Morgan Stanley UK	21 months	20/9
Fujian	75,339	1997	Zhangjiagang 25-30 Sep	Singapore Japan rge	\$35,000	Transpower		25/9
Solana	75,275	1995	Continent 10-15 Sep	UKCont	\$29,500	Chart not rep	0-2-3 LLegs	7/9
Energy Star	75,250	2003	Rostock 3-6 Sep	China	\$34,000	Panoceanic Bulk UK		1/9
Audax	75,220	2001	Goa 23-26 Sep	Worldwide	\$34,000	K Line		15/9
GH Fortune	75,214	2002	Busan 7-12 Oct	worldwide	\$33,000	Chart not rep	4-6 months	28/9
GH Fortune	75,214	2002	Sth Korea Oct 10-15	worldwide	\$31,000	STX Panocean	1 Year	18/9
Leda	75,169	2001	Taichung 26-29 Sep	Mundra	\$28,500	Shadab		28/9
Pearl Of Jebel Ali	75,157	2002	Thailand 25-27 Oct	worldwide	\$31,500	Worldlink	1 Yrs	29/9
Archon	75,121	2001	Kashima 1-10 Oct	Continent	\$34,750	Oldendorff Carriers		28/9
Thalia	75,120	2001	worldwide 1 Nov-31 Dec	worldwide	\$26,000	Armada Switzerland	2 years	20/9

Marina	75,115	2000	Zhangjiangang 11-20 Sep	worldwide	\$29,500	Cargill Geneva	1 year	4/9
Amalia	75,100	2000	Pvesme 17 Sep	Atlantic	\$33,000	Bottiglieri		21/9
City of Dubrovnik	75,100	1995	Taen Sep 25-30	worldwide	\$36,150	Hanjin		18/9
Silver Phoenix	75,000	2006	Surabaya 29-30 Sep	Japan	\$43,500	NYK		22/9
Yong Huan	74,837	2000	Mundra 2-5 Oct	China	\$26,250	Uniwell		29/9
Ageless	74,823	2004	Rotterdam 8-10 Sep	China	\$35,000	Chart not rep		5/9
Angelic Grace	74,750	2001	Huangpu 11-12 Sep	Worldwide	\$31,000	Daebo Shipping	3-5 months	8/9
Gianfranca D Amato	74,710	2000	Worldwide Jun 01-Aug 31	worldwide	\$22,000	Bottiglieri	22-26 Months	18/9
Marilena D'Amato	74,710	2001	Vizakhapatnam 24 Sep-2 Oct	China	\$33,000	Jaldhi Overseas		25/9
Goldbeam Trader	74,700	2001	Gijon 23-25Sep	Worldwide	\$33,000	Chart not rep	5-6 Mnths	11/9
Marietta	74,507	2004	Hokkata 07-09 Sep	Oxelosund	\$31,000	Chart not rep		7/9
Salandi	74,502	1999	USG 9-10 Oct	Far East	\$29,000	STX Pan Ocean	plus \$550,000 Bal bon	27/9
Songa Hui	74,500	2001	Aden 29-30 Sep	China	\$28,500	Chinese	via Richards Bay	27/9
Yuan Zhi Hai	74,500	2005	Far East 15-31 Oct	worldwide	\$31,000	Samsun Shipping Corp	12 months	21/9
Maria GO	74,477	2005	Brindisi 2-10 Oct	Red Sea/Black Sea	\$29,750	Cargill		26/9
Alpha Harmony	74,427	2001	NoPac 20-30 Sep	Far East	\$31,000	Louis Dreyfus France	plus \$550,000 Bal Bon	7/9
Cape	74,408	1997	El Ferrol 26-30 Sep	Cape Passero	\$30,000	Cosbulk	via ST Lawrence	22/9
Amira	74,400	2001	Sasebo 20-25 Sep	Far East	\$37,500	Louis Dreyfus France		19/9
Medi Tokyo	74,356	1999	USG 27 Sep-01 Oct	Worldwide	\$32,000	STX Panocean Shpg	plus \$600,000 Bal Bon	15/9
Navios Galaxy1	74,333	2001	Nagoya 10-12 Sep	Japan	\$33,000	K Line - Kawasaki		7/9
Afovos	74,297	2001	Surabaya	Worldwide	\$33,100	Cargill Geneva	4-6 mnths	6/9
Tian Yu Feng	74,272	2001	Bin Qasim 28-30 Sep	China	\$23,500	Chinese	via India	27/9
Tian Bai Feng	74,271	2000	Lianyungang 24-26 Sep	worldwide	\$26,000	Swissmar	2 years	13/9
Boreal	74,222	2002	Kosichang Sep 20-25	Yemen	\$34,000	AWB LTD.		18/9
Sea Urchin	74,193	2001	Shekou 14-15 Sep	Worldwide	\$33,250	Cargill Geneva	5-7 Days	15/9
Africa Graeca	74,133	2002	Ecsa 20-30 Sep	Spore/Jpn Rge	\$31,000	Louis Dreyfus France	plus \$800,000 Bal Bon	6/9
Yong Li	74,100	2001	Taiwan 8-10 Sep	Immingham	\$32,500	SSE Perth		5/9
Aspendos	74,100	2003	Aden Sep 16-18	China	\$30,000	Cargill		18/9
Alterego	74,047	1999	La Coruna 5-7 Sep	Far East	\$31,500	Cargill Geneva		5/9
Willi Salamon	74,002	2000	Esbjerg 10-12 Sep	worldwide	\$29,000	Britannia Bulk	16-18 months	5/9
Alabama	74,002	1998	Kosichang 18-20Sep	Worldwide	\$33,000	Daiichi Japan	3-5 Mnths	11/9
Riruccia	74,002	1997	Zhangzhou Sep 23-25	Japan	\$34,500	Shinwa Kaiun		18/9
Gemstar	74,001	1999	Chiwan 3-9 Sep	Hong Kong	\$26,500	Chart not rep		5/9
Carl Mesem	74,001	1999	Shanghai 13-15Sep	Worldwide	\$32,000	Chart not rep	3-5 Mnths	11/9
Tian Song Feng	74,000	2000	Fos 14-15 Sep	Spain	\$31,000	Cargill Geneva		15/9
Atlantic Hawk	74,000	2002	Sept Isles 11-13 Sep	Passero	\$29,000	National Navigation	plus \$380,000 Bal Bon	1/9
Great Eagle	74,000	2005	Piombino 26 Sep	SK-Passero	\$28,000	Louis Dreyfus France		29/9
Carola	73,981	1997	Matsushima 30 Aug-1 Sep	China	\$25,750	Glory Wealth Qingdao		1/9
Bruno Salamon	73,965	1998	Zhoushan 2-10 Sep	worldwide	\$31,000	Cargill Geneva	5-6 months	1/9
Bruno Salamon	73,965	1998	Zhoushan 2-10 Sep	Spore/Jpn Rge	\$31,500	Panoceanic Bulk UK		1/9
Tetien Trader	73,910	2001	Pmole 25-30 Sep	Skaw/Passero	\$29,750	Cargill Geneva	plus \$60,000 Bal Bon	15/9
Marigo P	73,810	2002	Sines 29Aug	China	\$33,500	Pioneer Metals China		1/9
Flipper	73,786	1999	China 28 Sep-5 Oct	worldwide	\$30,000	Morgan Stanley SG	1 year	13/9
Newcastle Max	73,786	1997	PMO 28-30 Sep	China	\$26,000	Chart not rep	via India	26/9
Global Harmony	73,763	1997	Wakayama 2-5 Oct	Far East	\$36,000	Drefus	via NoPac	22/9
Elinakos	73,751	1997	USG 21-30 Sep	Passero	\$27,000	Cargill Geneva	plus \$500,000 Bal Bon	1/9
Red Nacre	73,739	1999	Kobe Sep 19-20	Singapore-Japan	\$35,750	Toepfer		18/9
Babitonga	73,726	1997	Aarhus 26-28 Sep	worldwide	\$29,500	Chart not rep	16-18 months	13/9
Babitonga	73,726	1997	Aarhus 26-28 Sep	worldwide	\$34,250	Oceanbulk	4-6 months	19/9

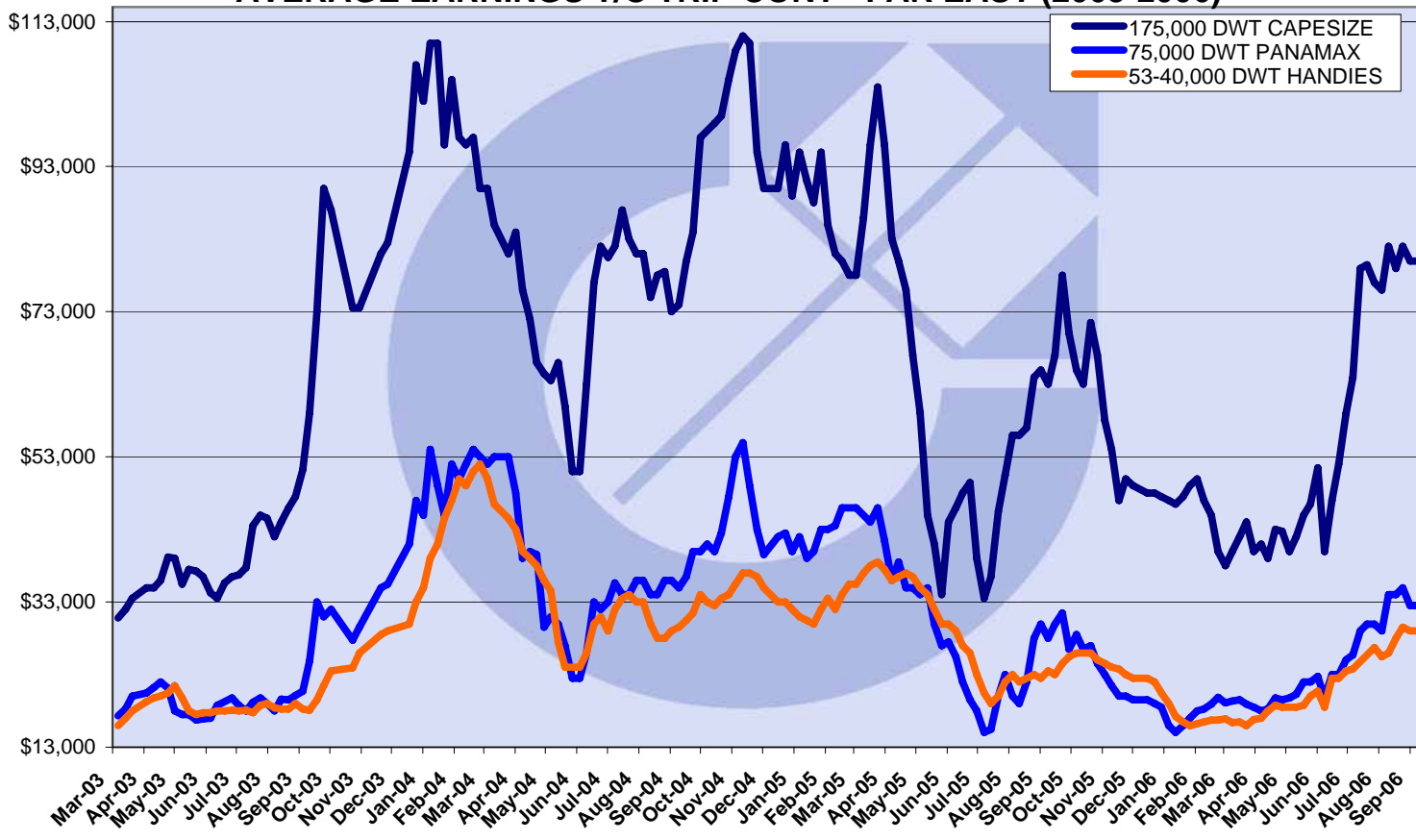
Darya Radhe	73,700	1999	Zhoushan 16-19 Sep	China	\$33,000	Chart not rep		12/9
Great Loyalty	73,679	1999	N Spain 25-27 Sep	Worldwide	\$36,000	PCLUK	3-4 Mnths	15/9
Pacific Paradise	73,645	1993	Lisbon 08-11 Sep	Spore/Jpn Rge	\$30,000	Cargill Geneva	2 LLegs	8/9
Anangel Omonia	73,519	1996	Isdemir 28 Sep- 2 Oct	worldwide	\$33,000	Norden	3-5 months	27/9
Polska Walczaca	73,505	1992	Immingham 5-7 Sep	UKCont	\$30,000	Golden Ocean HK		4/9
Endless	73,427	1999	Kimitsu 10-12 Oct	Spore/Jpn Rge	\$31,000	Louis Dreyfus France		29/9
Great Bless	73,251	1997	USG 10-15 Oct	Far East	\$27,250	STX Panocean Shpg	plus \$525,000 Bal bon	28/9
Great Glory	73,192	1997	Haldia 21-27 Sep	China	\$32,500	Chart not rep		8/9
Drin	73,087	1996	Swinoujscie 20-24 Sep	China	\$35,000	Daeyang	via Baltic	22/9
Atlantic	73,049	1996	Qingdao 9-12 Sep	worldwide	\$25,000	Klaveness Norway	2 years	1/9
Waimea	73,048	1997	Yangtze River 3-6 Sep	worldwide	\$23,000	STX Panocean Shpg	3 years	4/9
Corviglia	73,036	1999	Mundra 6-8 Oct	Far East	\$32,000	Chart not rep	via WC India	22/9
C. Journey	73,035	1995	Surabaya Prompt	Spore/Jpn Rge	\$30,000	Hanjin Shppng Seoul	50 Days 2 Legs	8/9
Alpha Happiness	73,000	1999	Pohang 15-18 Sep	Spore/Jpn Rge	\$30,000	Louis Dreyfus France		8/9
Silver One	72,917	2000	China 21-30 Sep	Worldwide	\$31,500	Danzas China	4-6 Mnths	15/9
Luise Oldendorff	72,873	1994	Aughinish prompt	China	\$31,500	Chart not rep		1/9
Oriental Sun	72,651	1998	NoPac 3-4 Oct	Far East	\$38,500	Grain house	plus \$675,000 Bal bon	22/9
Ever Blossom	72,517	1997	Kwang Yang prompt	Sth Korea	\$24,000	Chokang		1/9
Fu Min	72,437	1997	Kobe 27-30 Sep	worldwide	\$30,000	Noble		27/9
Fu Hua	72,437	1997	Brazil Sep 22-28	China	\$30,000	Sinochart	plus \$650,000 Bal bon	18/9
New Leader	72,400	1996	Yantai 13-20 Sep	Worldwide	\$30,000	Hmm Seoul	4 Months	12/9
Ocean Favour	72,400	2000	Shanghai 5-10 Oct	UKV	\$29,000	Chart not rep	via Indonesia	27/9
Salmas	72,345	1995	Sw Pass 30 Sep-5 Oct	Passero	\$31,500	Chart not rep	plus \$585,000 Bal bon	21/9
Vogetrader	72,171	1996	Taichung 3-5 Sep	Spore/Jpn range	\$30,000	Chart not rep		4/9
Selendang Tiara	72,162	1998	Paradip 20-23 Sep	China	\$33,500	Chart not rep		21/9
Iran Hamedan	72,145	2001	N China 20-30 Sep	ARA	\$36,500	Chart not rep		21/9
La Jolla	72,126	1997	Pascagoula 06-08 Sep	Continent	\$28,000	Cobelfret	plus \$850,000 Bal Bon	7/9
La Jolla	72,126	1997	Hamburg 5-15 Oct	UK Cont	\$32,500	Chart not rep		19/9
Ocean Pride	72,000	1997	Hadong Sep 18-22	China	\$34,000	Grand Ocean		18/9
Santa Markela	71,733	1990	Gijon prompt	Skaw/Passero	\$30,000	Chart not rep	2 laden legs	4/9
Samjohn Spirit	71,730	1994	Port Said 27Aug-2 Sep	worldwide	\$31,000	PCLUK	5-6 months	4/9
Happy Day	71,694	1997	USG 20-30 Sep	Far East	\$29,250	Cargill Geneva	plus \$600,000 Bal Bon	13/9
Oinoussian Legend	71,685	1997	Rotterdam 02 Sep	Aden/Pmo	\$30,500	Noble Chart	0 retro	12/9
Buenos Aires	71,677	1998	Passero 10-12 Sep	worldwide	\$30,000	STX Panocean Shpg	3-4 months	1/9
Yuan Zi	71,298	1997	Tomakomai 16-18 Sep	Spore/Jpn Rge	\$32,000	Cargill Geneva		8/9
Tai Prize	71,222	2001	Xingang Sep 28-30	worldwide	\$26,000	Chart not rep	2 Years	18/9
Alescabalo	70,402	1990	P Lisas 10-12 Sep	Passero	\$28,000	D'Amico	plus \$500,000 Bal Bon	1/9
Kater Wave	70,359	1989	Immingham 10-15 Sep	Worldwide	\$26,750	Bottiglieri	11-13 months	12/9
Hanjin Tacoma	70,347	1994	PMO 19-25 Sep	China	\$29,000	Chart not rep		19/9
Quesa	70,312	1993	Kandla 3-10 Oct	China	\$28,500	Wylex	via Goa	27/9
Gerasimos	70,296	1996	Mundra 22-24 Sep	Skaw/Passero	\$32,000	Pacific Carriers Sg		21/9
Annoula	70,281	1997	Tilbury 30 Sep-3 Oct	UK Cont	\$27,000	Azure	1-2 ladel legs	28/9
YM Equality	70,252	1997	Dunkirk 25-30 Sep	Worldwide	\$30,500	Hanjin Shppng Seoul	7-9 months	12/9
YM Equality	70,252	1996	Dunkirk 28-30 Sep	Gib-Skaw	\$25,500	Toepfer		29/9
Pleione	70,189	1996	Butterworth 20-25 Sep	China	\$35,000	Chart not rep		21/9
Full Comfort	70,181	1994	Paradip 22-24 Sep	India	\$40,000	Chart not rep		15/9
Apostolos	70,119	1995	Fukuyama 20-25 Sep	Worldwide	\$32,750	Chart not rep		15/9

SD Nova	70,108	1996	Inchon 14-24 Sep	worldwide	\$29,750	Sinochart	7-9 months	4/9
Powerful	70,083	1994	Taiwan 10-12 Sep	worldwide	\$28,500	Daeho Shipping		4/9
Bulk Phoenix	70,029	1994	USG 12-13 Sep	Aden/Pmo	\$27,000	Bunge	plus \$575,000 Bal Bon	13/9
Bulk Patriot	70,003	1994	Hoping 20-24 Sep	Worldwide	\$29,500	STX Panocean Shpg	10-12 Mnths	15/9
De Zhou Hai	69,952	1995	PMO spot	China	\$21,600	Chart not rep		28/9
Teng Fei Hai	69,900	1995	USG 10-15 Sep	Japan	\$27,000	Cargill Geneva	plus \$580,000 Bal Bon	4/9
I rini	69,734	1988	San Ciprian 08-12 Sep	Aughinish	\$30,000	Cobelfret		12/9
Torm Marta	69,638	1997	Ube 26-28 Sep	Singapore-Japan rge	\$30,000	Cargill	via NoPac	26/9
Fortezza	69,634	1993	Ghent Spot	worldwide	\$28,000	Deiulemar Italy	1 year	1/9
Mass Merit	69,620	1993	Shanghai 18-21 Sep	Worldwide	\$33,000	Oldendorff Carriers	5-7 Mnths	15/9
SD Victory	69,585	1986	Qingdao 30 Sep-4 Oct	Cape Passero	\$34,000	Egyptian Charterer		25/9
Yao Hai	69,497	1986	Dangjin 08-14 Sep	Bin Qasim	\$28,500	Louis Dreyfus France		7/9
Five Stars Pioneer	69,428	1981	Guangzhou 5-10 Oct	India	\$23,000	Chart not rep		29/9
Anaxagoras	69,306	1990	Mundra 2-5 Oct	Far East	\$30,000	North China Shanghai		20/9
Joyous Society	69,274	1994	Kobe 3-5 Oct	Spore/Jpn Rge	\$30,000	Chart not rep		29/9
Big Sky	69,189	1994	Terneuzen 21-30 Sep	Worldwide	\$34,000	STX Panocean Shpg	5-7 months	12/9
Achilleas	69,180	1994	Rozi 29-30 Sep	PMO	\$30,750	Maywal	via Western Australia	27/9
YM Equality	69,163	1997	Passero Spot	Dunkirk	\$28,000	Hanjin Shppng Seoul		6/9
Foremost	69,146	1998	Recalada 24-26 Sep	Aden-Japan Rge	\$29,500	Noble Chart	plus \$750,000 Bal Bon	12/9
Rubin Rosebay	69,121	1994	Kinuura 29-30 Sep	Far East	\$33,250	Dreyfus		25/9
First Endeavour	69,111	1994	brindisi 07-30 Oct	Worldwide	\$31,650	North China Shanghai		15/9
Shun Ji Xing	69,011	1983	Nantong 1-3 Oct	Spore/Jpn Rge	\$27,250	Chart not rep	2 laden legs 1st	29/9
Summer Fortune	69,000	1997	Nagoya 20-24 Sep	Japan	\$31,500	Chart not rep		15/9
Pleiades	68,962	1997	Labuan 01-05 Oct	Italy	\$36,500	Cargill Geneva		15/9
Hellenic Sky	68,591	1994	Ulsan 20-22 Sep	Far East	\$30,300	Louis Dreyfus France		15/9
Ais Nikolas	68,405	1984	Mundra Spot	China	\$23,000	Chart not rep		12/9
Sea Magnolia	66,043	1991	Vado 2-8 Oct	UK	\$24,500	Klaveness Norway		29/9
SD Progress	65,808	1989	Valencia 24-30 Sep	Skaw/Passero	\$31,000	Cos Bulk		21/9
Astron Spirit	65,767	1984	Chennai 27-30 Sep	China	\$28,500	Chart not rep		19/9
Vitali	65,739	1982	Phu My 10-14 Sep	Dangjin	\$20,000	HMM Seoul		4/9
Friendly Zhejiang	65,289	1985	South China 30-Sep	India	\$21,500	STX Pan Ocean		25/9
Sundance II	65,224	1983	Kunsan 12-22 Sep	China	\$27,250	Kroon Shipping		7/9
Five Stars Union	65,164	1982	Kwang Yang 10-15 Sep	PMO	\$27,200	ETA		7/9
GO Faith	65,125	1984	Xingang 11-13 Sep	Taiwan	\$22,000	Ta Ho Maritime Corp.		7/9
Go Faith	65,125	1984	Taiwan 9-10 Oct	worldwide	\$23,000	Source Link Co	4-6 months	28/9
Anastasia	65,015	1981	Brake spot	Med	\$23,000	Bunge	2 laden legs	26/9
Theofan M	64,975	1982	PMO 21 Sep	Turkey	\$21,750	Seafreight	via Bandar Abbas	22/9
Theodoros P	64,957	1980	Ghent 30 Sep 3 Oct	Spain	\$23,000	Chart not rep		29/9
Natty	64,884	1982	Las Palmas 21-25 Sep	PMO	\$26,500	Heavens Gate	via Brazil	22/9
Natty	64,884	1982	Ravenna 12-Sep	PMO	\$23,500	Heavens Gate	via Brazil	27/9
Minoan Hope	64,871	1982	Santander 16-20 Sep	Passero	\$23,750	Cargill Geneva		19/9
Hebei Express	64,854	1984	Black Sea 20-22 Sep	Aden-Colombo	\$27,000	Glencore Baar		19/9
Stefania	64,848	1981	Kandla 22-25 Sep	China	\$17,500	North China Shipping		27/9
Wadi Sudr	64,214	1994	Kunsan Prompt	Spore/Jpn Rge	\$29,500	Oldendorff Carriers	02 LLEgs	6/9
Azure	64,200	1982	Mundra 26-30 Sep	Skaw	\$24,000	Chart not rep		25/9
Pearl Of Sharjah	64,169	1983	Longkou 14-24 Sep	Worldwide	\$20,000	Danzas China	1 Yrs	6/9
Sea Charm	63,870	1982	Trombetas 5-10 Sep	Continent	\$20,000	Klaveness Norway	plus \$415,000 Bal Bon	4/9

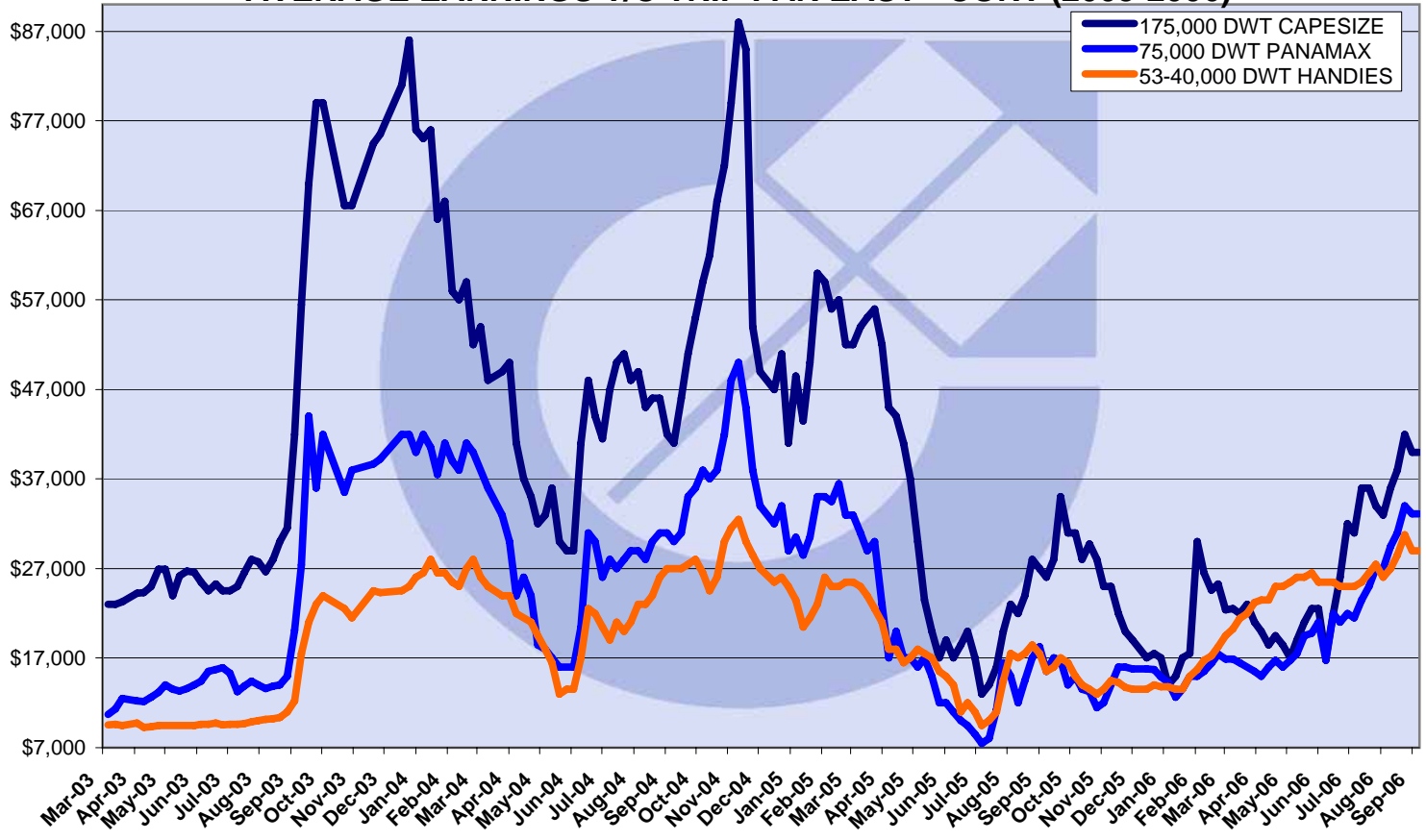
Sea Bird	63,868	1984	Manilla 23-28 Sep	Passero	\$25,000	Oldendorff Carriers		15/9
Sea Bird	63,868	1984	Manilla 27-28 Sep	skaw-gib	\$25,250	Chart not rep		29/9
Stamos	63,865	1985	Passero 10-17Sep	sk-passero	\$25,000	AZURE		12/9
M Faruk	63,494	1984	China 10-20 Oct	Continent	\$29,500	STX Pan Ocean		25/9
Nikos O	63,179	1982	cannakale 17-22 Sep	India	\$26,500	Glencore Baar		15/9
Ledra	61,981	1980	Amsterdam 30 Aug	Aughinish	\$21,000	Klaveness Norway		1/9
Seaeagle	61,776	1981	Barcelona spot	India	\$25,500	Wamapol	via Casablanca	27/9
Agios Nikolas	61,755	1982	PMO 3-9 Oct	China	\$21,500	Uniwell		20/9
Agios Athanasios	61,418	1980	Ravenna 20 Sep	China	\$21,250	Industrial Carriers	via Black Sea	26/9
Dubai Ambassador	56,950	2004	China Spot	Worldwide	\$29,500	Daewoo Corp	4-5 months	12/9
Yuaning Sea	55,580	2004	PMO 1-5 Oct	China	\$22,000	Noble Chart		28/9
Ocean Pearl	55,500	2004	Zhoushan 11-16 Sep	Spore/Jpn Rge	\$30,000	Chart not rep		12/9
Pos Island	55,500	2006	Xingang 19-21 Sep	Worldwide	\$28,500	Eitzen Bulk Denmark	1 Yrs	15/9
Sealuck II	55,000	2004	USG 3-10 Oct	Spore/Jpn Rge	\$38,000	Chart not rep		20/9
Evnia	53,650	2003	Thailand 15-19 Sep	ECL	\$32,000	Coal & Oil		15/9
Nord Mariner	53,500	2006	Shanghai 1-10 Sep	worldwide	\$28,000	Chart not rep	5-7 months	4/9
C.Duckling	53,098	2002	Karachi 09-12 Sep	China	\$22,000	Chart not rep		6/9
Young Spring	53,023	2002	PMO 5-10 Oct	China	\$20,500	Uniwell		28/9
Spar Canis	53,000	2005	Muscat spot	worldwide	\$27,300	STX Panocean Shpg	5-7 months	4/9
Spar Canis	53,000	2006	PMO 25-30 Sep	China	\$20,500	Uniwell	via India	26/9
Bulk Scorpio	52,384	2003	San Juan 5-10 Oct	Singapore-Jpn Range	\$34,500	Chart not rep		22/9
Jag Rahul	52,364	2003	N China 3-7 Oct	West Africa	\$32,000	Norden Denmark		28/9
Tenshou Maru	52,226	2006	Goa 23-28 Sep	China	\$26,000	Chart not rep		19/9
Bianco Bulker	52,193	2001	Qingdao 3-6 Sep	India	\$28,000	Chart not rep		1/9
Trident Destiny	52,068	2000	S Japan 19-22 Sep	Colombo/Japan	\$31,000	Chart not rep	4-6 months	12/9
Navios Achilles	52,063	2001	Worldwide 01 Oct-31 Jan	Worldwide	\$23,000	Thoresen	2 Yrs	6/9
Capetan Vassilis	51,187	2003	S China Spot	Worldwide	\$30,000	Dooyang Shipping	5-7 Mnths	15/9
Nueva Esperanza	50,900	2003	rizhao Spot	Aden-Japan	\$29,000	Cetrappa	70-90 Days	12/9
Prabhu Jivesh	50,900	2002	Haldia 15-20 Sep	China	\$26,500	Chart not rep		12/9
Maritime Jeongam	50,200	2002	Dom Rep spot	Atlantic	\$30,000	Chart not rep	2 laden legs	5/9
Virginia	50,175	2001	Continent spot	Spore/Jpn Rge	\$28,750	Oldendorff Carriers		21/9
Nemtas-1	50,077	2001	Lianyungang Prompt	Ecsa	\$27,100	Eitzen Bulk Denmark		6/9
Imme Oldendorff	48,913	1999	Sw Pass 13-17 Sep	Spore/Jpn Rge	\$30,750	STX Panocean Shpg		1/9
Medi Trader	48,225	1999	Tarragona spot	Middle East Gulf	\$27,000	Hawknet Ltd		5/9
Jin Qiang	47,324	1998	Port Manatee 4-10 Oct	Spore/Jpn Rge	\$34,000	Korea Line		20/9
VOC Rose	47,183	1998	Karachi 10-12 Sep	China	\$20,000	Chart not rep		8/9
Genco Carrier	47,180	1998	Port Harcourt spot	worldwide	\$27,500	MUR Denmark	4-6 months	19/9
Haifu Star	46,886	1977	zhangjiang 15-25 Sep	Med	\$21,000	Chart not rep		7/9
Gang Qiang	46,790	1997	Damietta 14-17 Sep	India	\$30,000	Cargill Geneva		15/9
Progress II	46,641	1995	China 23-26 Sep	Worldwide	\$26,500	Clipper Denmark	1 Yrs	15/9
Stove Transport	46,200	1998	Bourgas 9-15 Sep	India	\$30,000	Cargill Geneva		5/9
Dubai Faith	45,681	1996	Savona spot	Singapore-Japan rge	\$26,500	Chart not rep		26/9
C Friend	45,675	1996	Port Arthur 6-10 Oct	worldwide	\$26,750	Armada Switzerland	11-13 months	28/9
Blue Seas	45,654	1995	Black Sea 05-20 Oct	Worldwide	\$26,100	STX Panocean Shpg	1 Yr	15/9
Nordtide	45,406	1995	Marmaras 16-20 Sep	PMO	\$34,000	Chart not rep		15/9
Pacific Trader	45,374	2000	Huangpu Prompt	Nigeria	\$25,500	Oldendorff Carriers		6/9
Ioannis Theo	45,320	1995	USWC 12-16 Sep	worldwide	\$25,000	Jebsens UK	plus \$375,000 Bal Bon	1/9
Rosina Topic	45,251	2000	Xiamen 23-25 Sep	W Africa	\$31,000	Oldendorff Carriers		21/9
Moorgate	45,151	1990	Nordenham 2-5 Sep	USG	\$18,000	Cargo Levant		4/9
Yong An 1	44,072	1995	USG spot	WCCA	\$40,000	Louis Dreyfus France		20/9
Zenovia	43,595	1992	Greece 19-26Sep	Worldwide	\$24,500	Chart not rep	1 Yrs	15/9
Adria	42,717	1997	Xiaocou 1-3 Oct	UKC	\$24,500	Oldendorff		27/9

Mihalis F	42,264	1990	Xingang 1-5 Oct	Continent	\$24,000	Oldendorff Carriers		28/9
Velebit	42,249	1990	Tenerife 9-13 Sep	India	\$21,750	Chart not rep		5/9
Tzini	42,003	1991	New Westminster 10-15 Oct	Philippines	\$27,000	Bunge	plus \$400,000 Bal bon	22/9
St. Andrew	41,551	1996	Mauritius 05-08 Sep	Worldwide	\$24,000	MUR Denmark	4-6 mnths	6/9
Christos	41,502	1983	Rizhao 23-28 Sep	West Africa	\$30,000	Pioneer Right		22/9
Parnassos	40,907	1984	Newhaven 12-22 Oct	worldwide	\$24,750	Atlas		25/9
Aplanta	39,680	1983	Nemrut Bay 23-25 Sep	India	\$26,000	Chart not rep		22/9
Taxiarhis P	39,013	1985	Huangpu 18-20 Sep	Atlantic	\$21,500	Oldendorff Carriers		12/9
Sea Mild	38,888	1985	Setubal 13-15 Sep	Turkey	\$22,000	Chart not rep		8/9
Provider	38,590	1985	Kvinesdal 3-4 Oct	Turkey	\$23,000	Navision Chartering		29/9
Yordan Lutibrodski	38,574	1986	worldwide 1 Nov-31 Dec	worldwide	\$31,000	Chart not rep	11-13 months	20/9
Bulk Atlantic	38,056	1983	Dneprobugsky 5-10 Oct	Venezuela	\$20,000	Chart not rep		28/9
Heron	37,692	1984	Varna 9-12 Sep	India	\$27,500	Cargill Geneva		1/9
Ali Ekinci	37,415	1982	Nemrut 2-6 Sep	Atlantic	\$20,000	Chart not rep	2 laden legs	1/9
B Europa	37,188	1982	E Med spot	USG	\$17,500	Chart not rep		19/9
Blue Princess	36,913	1986	Durban 10-15 Oct	Continent	\$20,500	Island View Durban		29/9
Agia Sofia	35,064	1982	Canakalle spot	USG	\$16,500	Cargo Levant		5/9
Samsun Earnest	33,024	1986	Jiangjin spot	Spore/Jpn Rge	\$23,000	Pioneer Beijing	2 laden legs	21/9
Jullieta	32,287	1983	Itaqui spot	UKC	\$22,000	Bunge		26/9
Ken Goh	31,900	2001	Oman 22-24 Sep	Atlantic	\$17,500	Island View Shipping		22/9
Rio Glory	30,190	1981	Parangua spot	UKC	\$19,000	Navision	2 laden legs	22/9
Darya Sur	28,814	1997	Porto Marghera spot	West Africa	\$20,000	Chart not rep		26/9
Apollonia	28,740	2002	Wwest coast Italy 27-29 Sep	USG	\$18,000	Clipper Denmark		20/9
Pos Auckland	28,678	2003	Busan 15-17 Sep	Worldwide	\$21,000	Chart not rep	3-5 months	8/9
Global Escort	28,412	1998	Thailand 19-21 Sep	Worldwide	\$21,000	Chart not rep	2 LLEgs	8/9
Nin	28,373	2000	Matsunaga 31 Aug	USEC	\$20,000	Chart not rep		8/9
Aonoble	27,308	1994	Singapore 21-23 Sep	Worldwide	\$20,000	Chart not rep	2-4 months	8/9
Clipper Morning	27,141	2002	China 15 Oct-15 Nov	worldwide	\$18,000	Samsun Shipping Corp		21/9
Xu Chang Hai	27,110	1997	Nanjig spot	SE Asia	\$17,500	Chart not rep	25 days	5/9
African Hawk	27,074	2004	Brownsville 4-6 Oct	Denmark	\$25,000	Bunge	via USG	27/9
Sukarawan Naree	25,729	1985	Barranquilla prompt	Continent	\$25,250	Lauritzen J. DK		29/9
Gebe Oldendorff	24,247	1998	Japan spot	South Africa	\$16,500	Clipper Denmark		1/9
Dominator	22,174	1991	London Prompt	W Africa	\$17,500	Chart not rep		8/9
Tarpon Santiago	17,679	1978	Lome spot	Med	\$9,000	Noble		22/9
Delvina	1,240	1966	China 15 Nov-15 Dec	worldwide	\$24,750	North China Shanghai	26-29 months	21/9

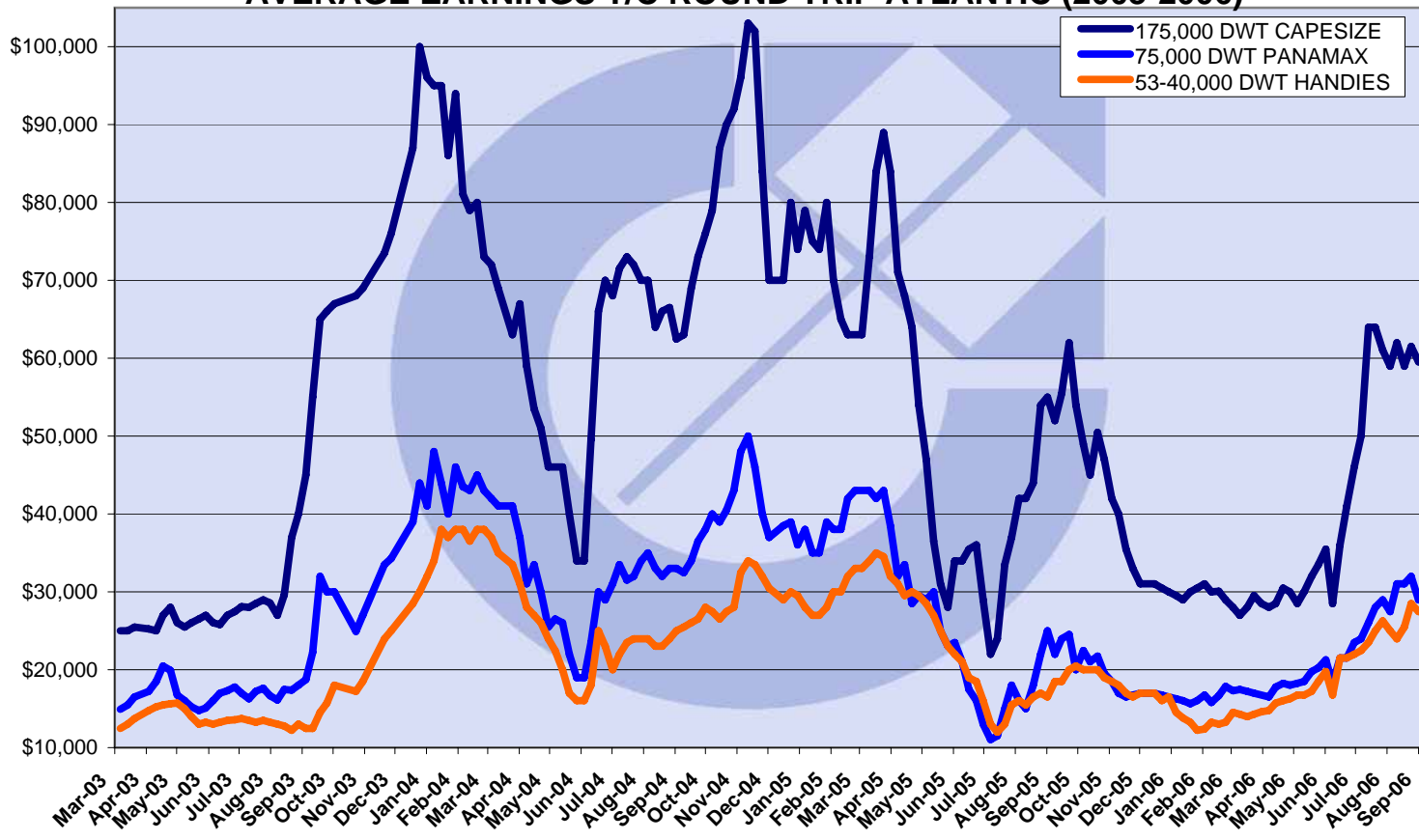
### AVERAGE EARNINGS T/C TRIP CONT - FAR EAST (2003-2006)



### AVERAGE EARNINGS T/C TRIP FAR EAST - CONT (2003-2006)



### AVERAGE EARNINGS T/C ROUND TRIP ATLANTIC (2003-2006)



### AVERAGE EARNINGS T/C ROUND TRIP PACIFIC (2003-2006)

