

NAME	DWT	BLT	DELY	REDELY	RATE	CHARTERER	NOTES	DATE
Yasa Dream	207,805	2008	Caofedian spot	China	\$20,500	Cargill	trip via Brazil	30/4
Kassos Warrior	194,000	1986	Qingdao ppt	China	\$17,000	Noble	trip via Brazil	28/4
Antonis Angelicoussis	177,855	2007	Xingang 10/12 Apr	China	\$14,600	Cargill	trip via West Australia	3/4
Elegant Star	177,206	2005	Xingang 29/30 Apr	worldwide	\$23,000	Swiss Marine	4/6 mos trading	21/4
Unique Brilliance	176,347	2001	Immingham 3/7 May	redel PMO	\$40,000	Kleimar	trip via Narvik and Cape of Good Hope -	29/4
China Steel Responsibility	175,775	2003	Rotterdam 8/10 Apr	Skaw-Cape Passero	\$18,500	SK Shipping	Fixed 2/4 - transatlantic round	6/4
China Steel Excellence	175,775	2002	Rotterdam 9/11 Apr	Dunkirk	\$17,000	Oldendorff	trip via Itaqui - MOL Relet	3/4
Nss Advance	173,246	1995	Cape Passero 29-30 Apr	Far East	\$32,000	Minmetals	trip	20/4
Castillo De San Juan	173,198	1990	Cape Passero 1/5 May	Far East	\$37,000	Cargill	trip via Brazil	22/4
CSK Beilun	172,561	1999	retro Singapore 10 Apr	China	\$26,000	Oldendorff	trip via S.Brazil	16/4
Cape Camellia	172,502	2000	Amsterdam 9/15 Apr	Skaw-Cape Passero	\$16,500	Essent	Transatlantic Round	2/4
Aquaglorry	171,009	2003	Amsterdam 22/28 Apr	Dunkirk approx	\$15,900	Oldendorff	trip via St.Lawrence	14/4
NSS Bonanza	170,907	1996	Cape Passero 2/5 May	China approx	\$39,000	Rio Tinto	trip via Seven Islands	21/4
Alpha Century	170,415	2000	Bayuquan 20-22 Apr	worldwide	\$22,500	Swiss Marine	3-5 months	20/4
Alpha Era	170,387	2000	Hunterston 29 Apr/1 May	PMO	\$35,000	Kleimar	trip via Seven Island & Cape Good Hope - Swiss Marine relet	16/4
Pitsa D	170,188	2002	Rizhao 8/10 Apr	Mailiao	\$16,000	SK Shipping	trip via Gladstone	2/4
C.Triumph	169,883	1999	China 5/10 May	worldwide	\$23,000	Noble -	4/6 mos trading	23/4
Front Striver	169,204	1992	Shanghai spot	China	\$13,250	Rio Tinto	trip via Australia	1/4
Aquahope	167,109	1997	ex dd Zhoushan 10 May	redel China	\$19,520	Cargill	trip via Brazil -	29/4
Global Winner	161,121	1997	Antwerp 22/24 Apr	Skaw-Cape Passero	\$16,500	SK Shipping	trip via Colombia	16/4
Aquabella	161,010	1995	Cape Passero 9/11 May	worldwide	\$28,000	Cosbulk	4/6 mos trading - STX Pan Ocean relet	23/4
Castillo De Gormaz	153,572	1989	Zhangjiang 24/26 Apr	China	\$18,000	Oldendorff	trip via via West Australia option Brazil	22/4
C.Laurel	151,380	1990	retro Xingang 22 Apr	China	\$20,000	Shourong	trip via San Nicholas - TMT Relet	27/4
Trinity Bulk	151,227	1990	Shekou 28 Apr/2 May	Singapore-Japan rge	\$17,000	Seawin	trip via West Australia	28/4
Nichiho Maru	151,177	1994	Cape Passero 29 Apr/4 May	Skaw-Cape Passero	\$15,000	Cargill	transatlantic round	17/4
C.Royal	151,044	1996	Qinhuangdao 22/24 Apr	worldwide	\$18,500	Swiss Marine	4/6 mos trading	17/4
GO Patoro	150,108	1991	Taiwan 21/24 Apr	worldwide	\$17,000	Swiss Marine	5/7 mos trading	22/4
C.Harmony	149,321	1994	China 20/30 Apr	China	\$11,000	Cosco Bulk	trip via W C Australia	15/4
Yong Sung	139,650	1983	Caofedian 21/23 Apr	China	\$7,500	Jaldhi	trip via India	17/4
Cape Athos	139,469	1981	Beilun 23/25 Apr	China	\$9,000	Jaldhi	trip via India	27/4
Good News	138,484	1982	Hunterston 25/30 Apr	China	\$18,000	Noble	trip via St.Lawrence and Cape of Good Hope	14/4
Venturer	127,907	1981	S.China 5/10 May	China	\$8,600	Winning	trip via Indonesia	28/4
Hebei Pearl	98,734	1987	Longkou 21/24 Apr	S.Korea	\$9,250	S.Korean chrtr	trip via Indonesia - OBO	27/4
Hong Express	94,993	1990	China 25/30 Apr	Singapore-Japan rge	\$10,000	Richstone	trip via Black Sea	9/4
Chiara DAmato	93,000	2008	aps Recalada 1/3 May	Singapore-Japan rge	\$19,000	Bunge	trip - 500,000 B/B	27/4
Koutalianos	92,710	2007	Immingham 8/10 Apr	Full Med	\$11,000	Windrose	trip via US Gulf	9/4
Kyzikos	92,598	2007	Philippines spot	Hong Kong- Taiwan	\$10,850	BHP Billiton	trip via Taboneo	14/4
Ikan Kurau	88,200	2006	Goa 12/14 Apr	China	\$14,500	Brownstone	trip	8/4
Alam Pintar	87,052	2005	psg Singapore 9/11 Apr	Singapore-Japan rge	\$13,500	Chart Not Rep	trip via EC South America	6/4
Alam Permai	87,052	2005	Amsterdam 27/30 Apr	full Med	\$11,500	Windrose	trip via US Gulf	27/4
Stalo	87,036	2005	Rotterdam spot	redel China abt 55-60 days	\$20,000	Cosco Europe	trip via Noauidhibou - Alfred C.Toepfer relet	29/4

NAME	DWT	BLT	DELY	REDELY	RATE	CHARTERER	NOTES	DATE
Medi Sentosa	83,690	2008	Montoir 26/28 Apr	ARA	\$11,000	Windrose	trip via Ponta Da Madeira	23/4
Nord Destiny	83,684	2008	Porto Torres 2/4 May	Singapore-Japan rge	\$19,000	grain house	trip via EC South America	28/4
Atlantic Legend	83,000	2010	Recalada 25-30 Apr	Cape Passero	\$9,700	Alfred C.Toepfer	plus \$290,000 ballast bonus.	20/4
Tiare	83,000	2009	ex yard Sanoyas 22/25 Apr	Far East	\$13,000	Noble	trip via NoPac	17/4
Orange Truth	82,962	2006	Lazaro Cardenas 1/3 May	China	\$21,000	Noble	trip via NoPac	28/4
Yasa Pioneer	82,849	2006	Mundra 7/10 Apr	China	\$14,000	Benemar	trip via Goa	6/4
Prem Veena	82,792	2007	Bedi 28/30 Apr	Japan	\$20,000	Oldendorff	trip via India	24/4
Ore Hansa	82,769	2006	retro Algeciras 11 April	Egypt	\$12,000	Noble	trip via USGulf	15/4
Nord Navigator	82,672	2008	retro Dangjin 13 Apr	Hong Kong	\$12,000	BHP Billiton	trip via Indonesia	17/4
United Challenger	82,641	2008	Immingham ppt	UKC	\$11,500	Chart Not Rep	trip via Baltic	3/4
Bulk Brasil	82,500	2008	Huangpu in d/c spot	China	\$7,000	Danzas	trip via Indonesia	8/4
Bulk Brasil	82,500	2008	Wenzhou 27/29 Apr	India	\$15,000	Morgan Stanley	trip via Indonesia	27/4
Iron Vassilis	82,296	2006	Santos 20/30 Apr	Singapore-Japan rge	\$16,500	Noble	400000 bb trip	9/4
Iron Bill	82,191	2006	aps Santos 20/30 Apr	China	\$18,000	Chart Not Rep	400000 bb -trip	3/4
Beijing 2008	82,191	2007	El Ferrol 10/12 Apr	Skaw-Cape passero	\$10,500	Cargill	trip via Santarem	9/4
Billion Trader I	82,050	2007	Bridgeport 10/18 Apr	EC India	\$17,000	Noble	320000 bb -trip via Newport News	2/4
Triton Osprey	81,448	2004	Mundra 5/10 May	Japan	\$21,000	SK Shipping	trip via Goa	28/4
Okinawa	81,397	2009	Haldia ppt	Japan	\$18,000	Klaveness	trip via EC India	23/4
Miho Pracat	80,300	2008	Sual 17/21 April	S.Korea	\$8,500	Norden	trip via Indonesia	14/4
Orange Trident	78,932	2007	Niihama 5/10 May	redel Sweden	\$7,500	Transbulk	trip via EC Australia -	29/4
Tai Promotion	77,834	2004	Haldia 5/7 Apr	Singapore-Japan rge	\$13,750	Chart Not Rep	trip via EC South America	2/4
Tai Progress	77,834	2007	Port Kelang 29/30 Apr	Spain	\$7,000	Louis Dreyfus	trip via Indonesia	22/4
Hebei Mercy	77,465	1985	CJK 28 Apr/3 May	China	\$10,000	Chart Not Rep	trip via Australia	27/4
Fortune Clover	77,430	2006	Qinhuangdao spot	China	\$12,000	Pacific Bulk	trip via EC Australia with coal	30/4
Ajax	77,328	2008	Haldia spot	China	\$11,750	Benemar	trip via EC India	7/4
Apollo	77,300	2006	El Ferrol 12/15 Apr	Brazil	\$7,000	United	trip via USEC	9/4
Beteigueze	77,053	2007	aps Brazil 25 Apr/5 May	Singapore-Japan rge	\$22,000	Bunge	trip - 475000 bb	23/4
Christina	77,053	2007	Ravenna 10/12 Apr	China	\$25,000	Richstone	trip via Black Sea	7/4
Bellatrix	77,053	2005	Fangcheng 19/21 Apr	Singapore-Japan rge	\$13,100	Louis Dreyfus	trip via EC South America	16/4
Delphinus	76,948	2007	Goa 27 Apr/2 May	Spain	\$9,500	Swiss Marine	trip via Richards Bay	24/4
Torm Antwerp	76,886	2008	Rizhao 6/10 May	PMO int alumina	\$13,500	K Line	trip via Bunbury & Jebel Ali	28/4
Centurion	76,838	2005	Piraeus 7/10 Apr	Singapore-Japan rge	\$23,000	Marin Bulk	trip via Black Sea	6/4
Anastasia C	76,830	2004	Brindisi 13/18 Apr	China	\$21,000	Oldendorff	trip via Black Sea	9/4
Lowlands Nello	76,830	2004	Ghent 2/6 May	Full Med-Black Sea int sugar	\$11,000	Cargill	trip via Brazil	28/4
Betis	76,801	2004	Nantong 15/20 Apr	Brazil	\$3,500	United	trip via EC Australia	2/4
Lowlands Ghent	76,801	2004	China ppt	Singapore-Japan rge	\$14,250	Chart Not Rep	trip via Australia - Daichi relet	28/4
Drake	76,781	2006	Praia Mole 15/17 Apr	Skaw-Cape Passero	\$10,750	Cargill	285000 bb -trip via EC South America	1/4
Belgrano	76,759	2004	Antwerp 25/30 Apr	China int fertilizers	\$24,000	K2	trip via Kotka & Cape of Good Hope	23/4
Good Hope Max	76,739	2005	Barcelona 1/10 Apr	Piombino	\$15,000	Cargill	trip via Port Cartier	1/4
Good Hope Max	76,739	2005	Piombino 29 Apr/5 May	redel Piombino	\$11,000	Cargill	trip via Hampton Roads -	29/4
Hebei Mercy	76,729	1986	CJK end Apr	Far East	\$10,000	Chart Not Rep	trip via Australia	24/4
Royal Breeze	76,679	2002	Hoping 6/8 Apr	China	\$8,000	Chart Not Rep	trip via West Australia	2/4
Royal Breeze	76,679	2002	Rizhao 3/8 May	China	\$10,250	cnr	trip via EC Australia	30/4
Double Prosperity	76,663	2005	Upriver 19/22 Apr	Skaw-Cape Passero	\$7,500	Cargill	265000 bbtrip - PCL Relet	7/4

NAME	DWT	BLT	DELY	REDELY	RATE	CHARTERER	NOTES	DATE
Crown Star	76,662	2002	retro Rotterdam 19 Apr	Far East	\$20,000	Cargill	trip via US Gulf	21/4
Grand Anemi	76,650	1988	Lianyungang spot	China	\$7,000	Uniwel	trip via India	24/4
CSE Harmony Express	76,634	2002	Kushiro 22-25 Apr	Xingang	\$14,250	PCL	trip	20/4
Medi Taipei	76,633	2003	Hoping 6/8 Apr	China	\$8,000	Danzas	trip via Indonesia	2/4
Medi Taipei	76,633	2003	retro sailing Taizhou 25 Apr	redel China	\$10,000	Hongxiang	trip via EC Australia -	29/4
Pantazis L	76,629	2002	Tianjin spot	S.China	\$15,500	Cetrappa	trip via Gladstone	23/4
Coral Sapphire	76,627	2006	Jintang in d/c 19/22 Apr	China	\$8,625	BHP Billiton	trip via Port Kembla	16/4
Bonita	76,623	2001	Brake 27/29 Apr	Singapore-Japan rge	\$19,500	Louis Dreyfus	trip via US Gulf or EC South America	16/4
Navios Star	76,620	2002	Beilun spot	Hong Kong	\$11,000	Klaveness	trip via Samarinda	16/4
Andrea DAMato	76,618	2008	CJK spot	redel China	\$12,000	Noble	trip via Australia -	29/4
Shi Dai 1	76,611	2007	Kosichang 23/25 Apr	Far East	\$15,750	Noble	trip via W.Australia	21/4
YM Virtue	76,610	2003	S.China 24/27 Apr	Singapore-Japan rge	\$17,500	Hanjin - Siba Relet	trip via Indonesia	22/4
Maple Valley	76,608	2005	Tianjin 3/6 Apr	China	\$8,000	Noble	MOSK relet -trip via Australia	1/4
Grand Diva	76,596	2007	Kobe 24/26 Apr	Far East	\$9,500	Noble	trip via NoPac - MOSK relet	16/4
Genco Thunder	76,588	2007	Sines 8/14 Apr	Skaw-Cape Passero	\$10,500	Cargill	trip via EC South America	7/4
Ocean Lily	76,585	2006	Recalada 17/19 Apr	China	\$17,000	Noble	430000 bb trip via EC South America	6/4
Captain P. Egglezos	76,559	2007	Taboneo spot	worldwide	\$12,000	United Bulkcarrier	3/5 months trading	15/4
Atlas Island	76,554	2008	Ube spot	EC India	\$8,750	Noble	trip via EC Australia	3/4
Kalliopi L	76,500	2001	Lanshan 22/27 Apr	China	\$11,750	Danzas	trip via EC Australia	17/4
IVS Pinotage	76,500	2005	Shanghai 25/30 Apr	Med	\$8,000	BHP Billiton	trip via EC Australia	22/4
Chris	76,500	2006	Hunterston 21/30 Apr	Skaw-Cape Passero	\$8,000	Cargill	trip via EC South America	8/4
RBD Fiuggi	76,500	2008	EC India 1/5 May	China	\$17,750	North China Shipping	trip	30/4
Mulberry Paris	76,492	2004	Hirohata 29/30 Apr	India-Japan	\$14,250	Noble	trip via EC Australia	22/4
Million Trader	76,466	2004	Dalian 5/10 Apr	worldwide	\$11,500	Cargill	11/13 months trading	1/4
Million Trader II	76,466	2004	Richards Bay 8/10 Apr	Thailand	\$18,250	Bunge	trip	1/4
Mulberry Wilton	76,453	2004	Inchon 2/7 May	redel China	\$10,000	Norden	trip via Australia -	29/4
De Ming Hai	76,437	2008	US Gulf 12/15 Apr	Med	\$11,000	Windrose	200000 bb -trip	2/4
De Xin Hai	76,437	2008	Guangzhou 3/5 May	Singapore-Japan rge	\$14,000	BHP Billiton	trip via Australia	27/4
Maritime Christine	76,423	2004	Fos 9/14 Apr	Skaw-Cape Passero int petcoke	\$9,000	Oldendorff	trip via Aruba	8/4
Trafalgar	76,397	2001	Lianyungang 16/20 April	China	\$8,500	NCS	trip via West Australia	15/4
Boomerang	76,390	2004	ex drydock Zhoushan 6/12 May	Singapore-Japan rge	\$14,750	Bunge	trip via EC South America	23/4
Prabhu Yuvika	76,310	2004	Amsterdam 29/30 Apr	Singapore-Japan rge	\$20,250	Cargill	trip via EC South America	28/4
Mineral Star	76,285	2006	Cape Passero 26/28 Apr	worldwide	\$18,000	Swiss Marine	4/6 mos trading	30/4
IVS Merlot	76,263	2005	Hong Kong spot	worldwide	\$10,000	Cosbulk	10000 daily 1st 40 days - 11500 daily balance - 11/13 mos trading	8/4
Oinoussian Lady	76,074	2004	Ube 25/30 Apr	Japan	\$14,000	Daiichi	trip via Australia	21/4
Prabu Puni	76,015	2002	Rizhao 24/30 Apr	Singapore-Japan rge	\$14,100	BHP Billiton	trip via Australia	28/4
Efrossini	76,015	2003	Quangzhou spot	redely PMO	\$16,500	Golden Ocean	trip via EC Australia and Iraq with grain	30/4
Alma Ata	76,008	1997	retro Liverpool 4 April	Singapore-Japan rge	\$14,500	Sovereign Shipping	trip via Orinoco	14/4
Queen Lily	76,000	2004	Immingham 2/5 May	Skaw-Cape Passero	\$14,000	Chart Not Rep	2laden legs	28/4
Pan Uno	75,955	2001	Mundra 17/19 Apr	China	\$15,000	Chart Not Rep	trip via India	16/4
Perla Bulker	75,949	2007	Fangcheng 10/12 Apr	worldwide	\$12,500	Farenco	3/5 mos trading	6/4
Prabhu Satram	75,926	2004	Shanghai 20/21 April	Singapore-Japan rge	\$12,000	Oldendorff	trip via EC South America	15/4

NAME	DWT	BLT	DELY	REDELY	RATE	CHARTERER	NOTES	DATE
Loch Lomond	75,854	2002	Stade 7/9 May	redel Skaw-Cape Passero	\$12,500	Practica	2 laden legs	29/4
Loch Lomond	75,845	2002	Barcelona 1/10 Apr	Stade	\$12,500	Proline	trip via Kamsar	1/4
Navios Cielo	75,834	2003	retro Cape Passero 5 Apr	Cape Passero	\$9,000	Windrose	trip via US Gulf	8/4
Rose Atlantic	75,734	2005	Kunsan 8/10 Apr	Singapore-Japan rge	\$7,250	Louis Dreyfus	trip via NoPac	1/4
Cyclades	75,681	2000	aps Canakkale ppt	Far East	\$30,000	Vista	trip via Black Sea - Golden Ocean relet	23/4
Star of Nippon	75,611	2004	Rotterdam 21-24 Apr	China	\$25,000	Noble		20/4
Medi Genova	75,600	2004	Piombino 3/6 Apr	Singapore-Japan rge	\$18,000	Cosco Qingdao	trip via US Gulf	2/4
Yuan Zhi	75,592	1997	Fukuyama 28/30 Apr	Lanshan	\$11,500	Rizhao Steel	trip via Australia	21/4
Anna	75,592	1999	Zhoushan 22-25 Apr	Far East	\$14,000	Oldendorff		20/4
North Prince	75,542	1999	Gangavaram spot	China	\$14,500	Jaldhi	trip via EC India	16/4
Anny Petrakis	75,515	2008	Cape Passero ppt	Port Said	\$13,000	Louis Dreyfus	trip via Black Sea and Red Sea	8/4
Goya	75,500	2008	Fangcheng 27/30 Apr	Singapore-Japan rge	\$13,000	Rio Tinto	2 laden legs	21/4
Danann Island	75,500	2006	Hitachinaka 24/30 Apr	Japan	\$13,750	Chubu Electric	trip via EC Australia	22/4
Michele Bottiglieri	75,413	2001	retro Visakhapatnam 21 Apr	Singapore-Japan rge	\$16,000	Cosco Oceania	trip via EC South America - Daichi Relet	30/4
Medi Singapore	75,397	2006	Fos 6/9 Apr	India	\$16,800	Chart Not Rep	trip via USEC	3/4
Gurasis	75,339	1997	Cape Passero 4/6 Apr	Singapore-Japan rge	\$19,000	Sovereign	trip via Orinoco - GMI relet	3/4
Nordmosel	75,323	2001	USGulf 23/26 April	UK/Continent	\$9,000	Oldendorff	trip - 260,000 Bal/Bon	15/4
Nord Orion	75,318	2006	Lazaro Cardenas 11/13 Apr	Singapore-Japan rge	\$17,000	STX Pan Ocean	trip via US Gulf	6/4
Century Star	75,318	2003	Dandong 3/8 May	China	\$10,500	cnr	trip via EC Australia	30/4
Giovanni Battista Bottiglieri	75,300	1999	Taranto 18-20 Apr	China	\$30,000	Richstone		20/4
Yomoshio	75,291	2001	Lianyungang 8/10 Apr	China	\$6,500	Farenco	trip via EC Australia	9/4
Giovanna Iuliano	75,265	1997	retro Bin Qasim 19 Apr	redel PMO	\$17,500	Chart Not Rep	trip via EC South America & Iran -	29/4
Energy Star	75,250	2003	Kosichang spot	worldwide	\$15,500	Cosco USA	3/5 mos trading	22/4
Filippo Lembo	75,229	1997	Bin Qasim spot	China	\$16,000	Chinese chrtr	trip via EC South America	22/4
Sidari	75,204	2007	Gijon 12/16 Apr	Skaw-Cape Passero int grain	\$9,000	Louis Dreyfus	trip via US Gulf & Egypt	8/4
City of Dubrovnik	75,132	2005	Itaquai 10/20 Apr	Singapore-Japan rge	\$16,500	Wilman	425000 bbtrip	9/4
Ecoan G.O.	75,131	2008	Xinsha 5/10 May	redel S.Korea	\$13,000	Polaris	trip Indonesia -	29/4
Marina	75,122	2000	Bayuquan 5/10 Apr	Singapore-Japan rge	\$7,600	STX Pan Ocean	trip via EC Australia	2/4
Marina	75,122	2000	Guangzhou 5/10 May	worldwide	\$14,900	Deiulemar - CTP Relet	balance of period until 23 Sept	22/4
Umberto DAmato	75,118	2008	Haldia 14/17 Apr	China	\$11,000	Jaldhi	trip	9/4
Danae	75,106	2001	S.China 5/7 Apr	worldwide	\$12,000	Augustea	2 years trading	1/4
Danae	75,106	2001	retro Shanghai 7 April	Singapore-Japan rge	\$11,500	Cargill	trip via EC South America	14/4
Amalia	75,100	2000	Cape Passero spot	Singapore-Japan	\$21,250	Cargill	CTP Relet - trip via Paranagua	21/4
Maltilda	74,868	1993	Singapore spot	China	\$9,250	SST	trip via Koolan Island	16/4
Capitola	74,816	2001	aps River Plate 8/10 May	China	\$21,500	Cosco Oceania	trip - 425,000 B/B	24/4
Capitola	74,816	2001	aps Santos 8/10 May	redely Singapore-Japan range	\$17,000	Cosbulk America	trip with Grain - Daeyang Relet - plus 400,000 B/B	30/4
Angelic Grace	74,764	2001	Cape Passero 2/5 May	Singapore-Japan range	\$20,000	Cargill	trip via EC South America with Grain	30/4
Samjohn Liberty	74,761	1998	Sual 10/12 Apr	worldwide	\$11,250	STX Pan Ocean	3/5 mos trading	7/4
Topeka	74,710	2001	Taiwan 4/6 Apr	China	\$9,500	Farenco	trip Indonesia	1/4
Garima Prem	74,608	2007	Hansaport spot	Skaw-Cape Passero	\$8,250	Cargill	Arcelor-Mittal relettrip via Tubarao	6/4
Isminki	74,577	1998	retro Hong Kong 21 Apr	China	\$17,500	Oceanvast	trip via Australia	23/4
Striglla	74,500	2009	Fukuyama 17/19 Apr	China	\$7,800	Danzas	trip via EC Australia	16/4

NAME	DWT	BLT	DELY	REDELY	RATE	CHARTERER	NOTES	DATE
Rosalia DAmato	74,500	2001	Aden spot	Singapore-Japan rge	\$11,250	Louis Dreyfus	trip via EC South America	8/4
Pavian	74,500	2001	Singapore 5/10 Apr	China	\$8,000	Uniwel	trip via India	6/4
Pavian	74,500	2001	Xingang 5/10 May	China	\$9,900	STX Pan Ocean	trip via Newcastle	30/4
Pearl Seas	74,483	2006	Visakhapatnam 19/20 Apr	Far East	\$13,250	Bunge	trip via EC South America	17/4
Iolcos Unity	74,476	2006	Singapore 25/30 Apr	Singapore-Japan rge	\$15,500	Bunge	trip via EC South America	22/4
Golden Seas	74,476	2006	Haldia 22/24 Apr	Japan	\$18,000	Daiichi	trip via Goa	22/4
Myrto	74,470	2001	Le Havre 7/10 Apr	Amsterdam	\$9,500	Cargill	trip via Santos - EdF relet	3/4
Catalina	74,432	2005	Gangavaram 25/30 Apr	Far East	\$13,500	Louis Dreyfus	trip via EC South America - SK Shipping relet	22/4
F.D. Gennaro Aurilia	74,414	2007	Genoa ppt	Skaw-Cape Passero	\$11,000	Cargill	trip via Argentina	17/4
Ever Shining	74,396	1999	Cape Passero 8/10 May	redel Skaw-Cape Passero	\$12,000	Cargill	trip via Kamsar - Cosbulk relet	29/4
Yong Li	74,382	2001	Canakkale 3/8 Apr	China	\$23,000	Richstone	trip via Black Sea	1/4
Aeolian Breeze	74,356	2001	Haldia 12/14 Apr	China	\$11,000	Noble	trip via EC India	9/4
Evanthia	74,297	2001	Redcar 17/19 Apr	Singapore-Japan rge	\$20,000	Louis Dreyfus	trip via US Gulf	16/4
Great Intelligence	74,293	2000	Vado 4/6 Apr	Med	\$10,000	Swiss Marine	trip via Colombia	2/4
Great Intelligence	74,293	2000	San Cyprian 25/30 Apr	Skaw-Cape Passero	\$12,000	Oldendorff	trip via US Gulf or USEC	22/4
Tian Yu Feng	74,272	2001	CJK 10/20 Apr	China	\$8,900	SST	trip via EC Australia	1/4
Tian Yu Feng	74,272	2001	Tianjin 25/27 Apr	Singapore-Japan rge	\$14,500	Chart Not Rep	trip via EC Australia	23/4
Yuan Zhi Hai	74,272	2005	Bayuquan 17/20 Apr	China	\$6,800	Sinotrans	trip via NoPac	9/4
Sea Urchin	74,193	2001	Soma ppt	China	\$8,500	Norden	trip via Prince Rupert	1/4
Yong Tai	74,061	2000	Huangpu 1/5 May	Italy	\$8,000	Norden	trip via Indonesia	24/4
Alabanda	74,044	1995	Brest 22/24 Apr transatlantic round	Skaw-Cape Passero	\$12,000	Chart Not Rep	transatlantic round	22/4
Ming May	74,006	1997	Lianyungang 28 Apr/3 May	China	\$15,500	BHP Billiton	trip via Hay Point	22/4
Elly	74,001	1990	Fangcheng prompt	north China approx	\$8,000	Noble	trip via India	14/4
Carl Mesem	74,000	1999	retro Singapore 5 Apr	India	\$10,500	Michele Bottiglieri Armatore Spa	trip via Richards Bay	16/4
Pacific Eagle	74,000	2004	Rizhao 21-23 Apr	Far East	\$13,000	Norden		20/4
Nicos L	74,000	2002	Singapore 1/3 May	redel Singapore-Japan rge	\$13,600	Bunge	trip via EC South America -	29/4
Blumenau	73,992	2000	Hamburg 20/23 Apr	psg Cape of Good Hope	\$15,000	K2 Shipping	trip via Casablanca & EC India	17/4
Jiu Long Feng	73,937	2001	Cape Passero 23-25 Apr	Singapore-Japan	\$18,000	Sealink		20/4
Marigo P	73,810	2002	passing Sundra Stait 14/15 April	Singapore-Japan reg	\$13,000	Dreyfus	trip via EC South America	14/4
Daebo Trader	73,810	2002	Jintang 15/20 Apr	Singapore-Japan rge	\$8,750	Daewoo	trip via NoPac	16/4
Aeolian Spirit	73,739	1999	Immingham ppt	UKC	\$19,000	Chart Not Rep	Armada relet -trip via Baltic (breaching IWL)	2/4
Piro	73,726	1997	Philippines 25-27 Mar	worldwide	\$12,000	Swiss Marine	11-13 months	20/4
Flipper	73,726	1999	Xingang 1/3 Apr	Singapore-Japan rge	\$10,500	cnr	trip via Australia	30/4
Maritime Putian	73,652	2000	Chiwan 3/8 Apr	Far East	\$12,000	Chart Not Rep	trip via EC South America	1/4
Protefs	73,630	2004	Tilbury 18/22 Apr	Far East int fert	\$20,000	Agroships	trip via Baltic	17/4
Pacific Prospect	73,630	1993	Jingtang 8/10 Apr	China int grain	\$7,000	Sinotrans	trip via NoPac	7/4
Omegas	73,606	1997	Hamburg 5/10 Apr	PMO	\$20,500	Cargill	trip via Iran	1/4
Hai Huang Xing	73,600	2005	Itaqui 20/23 Apr	PMO	\$17,000	Bunge	370000 bb -trip via Iran	1/4
Domina	73,593	2007	Cape Passero ppt	China	\$21,800	Cargill	trip via Ponta Da Madeira	23/4
Lotus Sun	73,556	1996	Hoping 11/13 Apr	China	\$6,700	Danzas	trip via Indonesia	8/4
Naias	73,546	2006	Immingham 18/22 Apr	China	\$19,000	Norden	trip via Orinoco	17/4
Antonis G.Pappadakis	73,538	1995	San Cyprian 10/12 Apr	India	\$17,000	West Asia Marine Singapore Ltd	trip via Casablanca	7/4
Legiony Polskie	73,505	1991	Fos spot	China	\$14,500	CTP	trip via Black Sea	15/4

NAME	DWT	BLT	DELY	REDELY	RATE	CHARTERER	NOTES	DATE
Szare Szeregi	73,505	1991	Zhoushan 26/30 Apr	China	\$12,400	Cargill	trip via NoPac	24/4
Zagora	73,435	2001	Lianyungang 23/25 Apr	Philippines	\$13,000	Oldendorff	trip via Indonesia	23/4
Great Bless	73,251	1997	Rotterdam 24/27 Apr	Singapore-Japan rge	\$22,000	NYG	trip via US Gulf - Cosbulk Relet	24/4
Ghent Max	73,220	1998	Singapore spot	Far East	\$15,750	Bunge	trip via EC South America	22/4
Global Challenger	73,218	1996	Shanghai 16/17 April	Singapore-Japan rge approx	\$9,500	Danzas	trip via EC South America	15/4
Ostende Max	73,207	1998	Tilbury spot	PMO- Japan rge grains option sugar	\$19,250	Cargill	trip via Brazil	24/4
Great Jade	73,192	1997	Amsterdam ppt	Porto Torres	\$12,500	Flame	trip via Ventspils	17/4
Bunga Saga 9	73,127	1999	Gijon 25/30 Apr	China	\$20,750	Cargill	trip via US Gulf	17/4
Bunga Saga 9	73,104	1999	Gijon 25-30 Apr	China	\$21,500	Farenco		20/4
Ever Young	73,081	1995	Haldia ely May	Singapore-Japan rge	\$12,500	Cargill	trip via EC South America	27/4
Brugge Max	73,056	1998	aps Recalada 25 Apr/5 May	Singapore-Japan rge	\$16,500	Cargill	trip via EC South America - 400,000 Bal/Bon	14/4
Lansing	73,040	1996	Continent ppt	India int fert	\$21,000	Oldendorff	trip via Tampa	24/4
Corviglia	73,035	1999	Zhanjiagang 4/10 Apr	Singapore-Japan rge	\$9,000	Great Pacific Navigation	2 laden legs	1/4
Toro	73,035	1995	Retro CJK 1 Apr	Singapore-Japan rge	\$10,000	Louis Dreyfus	trip via EC South America	7/4
Nyon	73,035	1999	Richards Bay 9/14 May	redely PMO-Japan rge int sugar	\$20,000	Cargill	trip via Brazil	24/4
Corviglia	73,035	1999	Mundra 2/4 May	China	\$18,000	Chart Not Rep	trip via India	27/4
General Guisan	73,035	1999	Taiwan 5/10 May	redel Bahrain int alumina	\$13,000	Transgrain	trip via Bunbury -	29/4
Proteus	73,018	1999	psg Gibraltar 31 Mar	PMO	\$17,000	Chart Not Rep	380000 bb -trip via Paranagua & Iran	1/4
Agios Efraim	73,018	1998	psg Gibraltar ppt	S.Korea int steel	\$17,000	STX Pan Ocean	trip via Brazil	8/4
Tiara Globe	72,928	1998	Magdalla 10/20 May	redel China	\$14,000	Uniwel	trip -	29/4
Alpha Happiness	72,893	1999	Caofeidian in d/c 10/12 Apr	China	\$7,000	Noble	trip via Australia	7/4
Deep Seas	72,891	1999	Fancheng 20/25 April	Singapore-Japan rge	\$11,000	Cargill	trip via EC South America	14/4
Alpha Effort	72,844	1999	Yantai 29 Apr/3 May	worldwide	\$14,000	Bunge	4/6 mos trading	24/4
Alpha Effort	72,844	1999	CJK 28/30 Apr	redel China	\$12,500	BHP Billiton	trip via EC Australia - Bunge relet	29/4
Coal Age	72,824	1997	Nantong prompt	worldwide	\$10,000	Swiss Marine	3/5 months trading	15/4
Hua Shan Hai	72,731	1998	Mundra 14/20 Apr	China	\$13,000	Farenco	trip via Goa	9/4
Spring Peacock	72,497	1998	Annaba 10/12 Apr	PMO	\$17,200	Louis Dreyfus	trip via Brazil & Iran	9/4
Kind Seas	72,493	1999	Geraldton 20/30 Apr	China	\$9,000	SST	trip - 140,000 B/B	16/4
Christina IV	72,492	2000	CJK ppt	China	\$7,000	Danzas	trip via EC Australia	16/4
Mar Reina	72,474	1998	Mundra 15/17 Apr	Far East	\$15,000	Wilmar	trip via EC South America	17/4
Fu Kang	72,437	1997	PMO 11/18 Apr	Singapore-Japan rge	\$12,500	STX Pan Ocean	trip via EC South America	3/4
Roger M Jones	72,239	1992	US Gulf 17/22 Apr	Fos int petcoke	\$7,500	PCL	210000 bstrip	8/4
Vogevoyager	72,171	1996	Xiamen 4/8 Apr	China	\$6,000	Pacific Bulk	trip via Newcastle	8/4
Juno Island	72,080	1997	retro Ube 7 Apr	Singapore-Japan rge	\$7,000	Chart Not Rep	trip via EC Australia	8/4
Hsin Ho	71,900	1997	San Ciprian 16/18 April	Far East	\$18,000	STX Pan Ocean	Cobelfret relet - trip via USGULF	14/4
GO Public	71,761	1993	retro PMO 18 Apr	PMO	\$17,000	Louis Dreyfus	trip via EC South America & PG	27/4
Captain Evangelos N.M.	71,685	1997	Mundra 20/23 Apr	China	\$16,000	Oldendorff	trip via Goa	16/4
Oinoussian Lion	71,662	1996	Lianyungang 20/25 Apr	PMO-Japan rge	\$11,000	Bunge	trip via EC South America	16/4
TPC Arirang	71,535	1994	Hamburg 10/14 Apr	UKC	\$9,500	Oldendorff	trip via Murmansk	6/4
TPC Arirang	71,535	1994	Dunkirk 9/10 May	China	\$20,000	Agroship	trip via Murmansk with fert - Daeyang relet	30/4
Great Luck	71,399	1998	Yuhuan 18/20 Apr	Philippines	\$8,000	Oldendorff	trip via Indonesia	16/4
C.Iris	71,393	1996	Quanzhou ppt	Singapore-Japan rge	\$10,250	Chart Not Rep	trip via EC South America	3/4

NAME	DWT	BLT	DELY	REDELY	RATE	CHARTERER	NOTES	DATE
New Arising	71,000	1995	Kaohsiung 20-21 Apr	Singapore-Japan	\$11,750	STX Pan Oean		20/4
Augusta	70,637	1981	Singapore spot	China	\$7,250	Brownstone	trip via India	22/4
B.Indonesia	70,424	1990	PMO 5/10 Apr	China	\$10,000	Uniwel	trip via India	6/4
Kater Wave	70,359	1989	Inchon 6/10 Apr	China	\$6,750	Chart Not Rep	trip via Australia	6/4
Tarang	70,321	1989	aps Paranagua 10/15 May	Skaw-Cape Passero	\$11,500	Azure Parcel Line	trip - 300000 bb - Mittal relet	23/4
Pierre	70,316	1996	Gdansk 5/7 Apr	worldwide	\$13,500	North China Shipping	4/6 mos trading	7/4
Pierre	70,316	1996	Gdansk 29 April/6 May	Continent	\$16,000	Norden	trip via Baltic	24/4
New Champion	70,296	1996	Cape Passero in d/c 15/16 Apr	Skaw-Cape Passero	\$9,750	Cargill	trip via EC South America	16/4
Annoula	70,281	1997	Gibraltar 10/12 Apr	Full Med	\$10,000	Windrose	trip via EC South America	8/4
Annoula	70,281	1997	Bin Qasim 27 Apr/1 May	PMO-Japan rge	\$13,500	Cargill	trip via EC South America - Glencore relet	17/4
Energy Rose	70,257	1997	Tianjin spot	China	\$7,000	Chart Not Rep	trip via EC Australia	7/4
Full Beauty	70,198	1994	PMO ppt	Singapore-Japan rge	\$15,000	Noble	trip via EC South America	21/4
Pleione	70,189	1996	Dalian 30 Apr/1 May	redel worldwide	\$12,000	STX Pan Ocean	3/5 mos trading	29/4
Full Comfort	70,181	1994	Zhoushan 18/20 Apr	Far East	\$10,000	Danzas	trip via EC South America	16/4
Renuar	70,123	1993	retro Singapore 19 April	China	\$13,000	Cosco Oceania	trip via EC South America	30/4
Apostolos	70,119	1995	Las Palmas spot	Skaw-Passero rge	\$11,000	Bunge	trip via EC South America	15/4
Powerful	70,083	1994	NoPac 20/30 Apr	Singapore-Japan rge	\$6,500	Louis Dreyfus	200000 bb -trip	3/4
Golden Joy	70,045	1994	Paradip 9/11 Apr	Singapore-Japan rge	\$11,000	Louis Dreyfus	trip via EC South America	3/4
Wadi Sudr	70,000	1994	Jintang 16/24 Apr	worldwide	\$9,000	STX Pan Ocean	3/5 mos trading	16/4
Wadi Alkarnak	70,000	1997	Praia Mole 15/20 May	UKC	\$9,000	Louis Dreyfus	trip via Argentina - 300,000 B/B	28/4
Torm Marta	69,638	1997	Mariveles spot	China	\$9,250	Cosco Qingdao	trip via EC Australia	2/4
Torm Marta	69,638	1997	Beilun 6/8 May	S.China	\$11,500	Chart Not Rep	trip via Indonesia	28/4
Oriental Pioneer	69,606	1996	passing Taiwan 14 April	Hong Kong	\$6,000	D'Amico	trip via Indonesia	15/4
Yao Hai	69,497	1986	Shekou 20/25 Apr	China	\$8,000	Sundial	trip via WC India	17/4
Big Wave	69,346	1989	Inchon 8/10 Apr	S.China	\$5,800	Grand China Shipping	trip via Australia	8/4
Panagiotis D	69,337	1991	Gwadar 11/15 Apr	Yemen	\$13,500	Chart Not Rep	trip via Black Sea	6/4
Prem Poorva	69,286	1994	Rizhao 8/12 Apr	Singapore-Japan rge	\$10,250	Chart Not Rep	trip via EC South America	3/4
Energy	69,255	2003	Cadiz 6/10 Apr	Singapore-Japan rge	\$17,000	Bunge	trip via EC South America	8/4
Big Sky	69,189	1994	Shanghai 13/15 Apr	Singapore-Japan rge	\$6,750	Louis Dreyfus	trip via NoPac	3/4
Power Loong	69,168	1992	Lanshan 29/30 Apr	Singapore-Japan rge	\$14,000	Danzas	trip via Australia	23/4
Cedar 1	69,146	1998	Taichung 26/28 Apr	China	\$15,250	Noble	trip via Australia	23/4
Ice Dreamer	69,146	1998	Mailiao 6/10 Apr	Mailiao	\$8,500	Chokang	trip via Indonesia	1/4
Meister	69,118	1997	Zhangjiang 28 Apr/3 May	Beilun	\$13,250	Danzas	trip via Newcastle	22/4
Gianni D	69,100	1998	UKC 1/3 May	Port Said	\$16,000	Copenship	trip via France & Egyptian Red Sea	27/4
Rubin Peony	69,064	1997	La Coruna 26 Apr/1 May	Skaw-Cape Passero	\$13,000	Essent	2 laden legs via Kamsar-Point Comfort	23/4
Sea Pride	68,892	1983	Bin Qasim ppt	Singapore-Japan rge int ore	\$12,000	Bunge	trip via Black Sea	16/4
Yun Tong Hai	68,788	1990	Dalian 2/5 May	China	\$13,000	Chinese chrtr	trip via Australia	23/4
Silver Mei	68,676	1989	Dalian 20-24 Apr	China	\$9,850	Wylex		20/4
Consul Poppe	68,591	1994	PMO 2/9 May	worldwide	\$14,500	Oldendorff	3/5 mos trading	24/4
Barcelona Bright	67,485	1981	Jebel Ali 18/23 Apr	China	\$8,100	North China Shipping	trip via Goa	16/4
Theoforos I	67,395	1987	Syria ppt	Port Said int grain	\$13,750	Glingrow	trip via Black Sea & Aqaba	8/4
Theoforos I	67,395	1987	Port Said 5/10 May	redel Port Said	\$14,250	grain house	trip via Black Sea & Egyptian Red Sea -	29/4
Jin Ocean	67,296	1984	Dangjin 5/10 Apr	China	\$4,800	Uniwel	trip via India	2/4

NAME	DWT	BLT	DELY	REDELY	RATE	CHARTERER	NOTES	DATE
Sun	66,894	1983	Karachi 1/5 May	China	\$13,000	Uniwel	trip via India	28/4
Alkaios	66,384	1985	Brixham spot	Stade	\$7,000	Proline	trip via Kamsar	27/4
Yu Lan Hai	66,043	1991	Jintang ppt	Singapore-Japan rge int sulphur	\$7,500	Sinotrans Vancouver	trip via NoPac	16/4
Bao Shan Hai	65,909	1991	Guangzhou spot	Bayuquan	\$6,750	Hongxiang	trip via Geraldton	21/4
Guoyan 5	65,298	1985	Jebel Ali 10/15 Apr	Singapore-Japan rge	\$11,000	Chart Not Rep	trip India	23/4
Benefactor	65,117	1986	PMO 15/25 April	China	\$8,000	Uniwel	trip via India	14/4
Gem of Cochin	64,976	1982	Paradip 19/25 April	China	\$10,250	Chart Not Rep	trip	15/4
3 Maj	64,850	1988	China 5/7 Apr	worldwide approx	\$8,250	Deiulemar	11/13 mos trading	7/4
Sun Harvest	64,714	1982	US Gulf 12/14 May	redel Greece	\$7,000	BUNGE	trip - 220000 bb	29/4
Palini	64,590	1980	Goa 12/17 Apr	China	\$7,000	Uniwel	trip	6/4
Amalia Del Bene	64,221	1989	Lanshan end Apr	China	\$7,500	Farenco	trip via Dalrymple Bay	16/4
Cape Courage	63,770	1982	PMO 16/19 Apr	China	\$8,000	NCS	trip via Goa	6/4
Dignity T	63,695	1984	Huangpu prompt	India	\$8,500	Armada	trip via Indonesia	14/4
Syros	63,325	1981	psg Durban 16/20 Apr	Italy	\$8,000	Bunge	trip via EC South America	8/4
Father F	63,212	1981	PMO 5/10 Apr	China	\$7,500	Uniwel	trip via India	6/4
Vega I	63,142	1982	Paradip spot	China	\$14,250	Chart Not Rep	trip via India	28/4
Maritime Emerald	58,731	2009	Haldia 17/21 April	China	\$13,500	Chart Not Rep	trip	14/4
Furness Melbourne	58,729	2008	Magdalla end April	China approx	\$16,000	Noble	trip	22/4
Tenmyo Maru	58,470	2009	New Mangalore spot	China	\$13,500	Triumph		20/4
Tenki Maru	58,000	2009	ex yard Japan 20/25 April	worldwide approx	\$11,000	WBC	1 year trading	9/4
Jin Sui	57,000	2008	Gibraltar early April	Atlantic	\$16,000	ED&F Man Shipping	2 laden legs	1/4
Mandarin Sky	57,000	2009	Paradip spot	China	\$10,000	Chart Not Rep	trip	14/4
Valerie	57,000	2008	Mumbai end April	China	\$14,500	Chart Not Rep	trip	21/4
Sanko King	56,678	2008	Singapore spot	India approx	\$8,750	Chart Not Rep	trip via Indonesia	3/4
Fanoula	56,560	2008	Dahanu 18/28 April	China	\$12,000	Uniwel	trip	14/4
Dubai Ambassador	56,062	2004	South China spot	China approx	\$13,000	Chart Not Rep	trip via South East Asia	21/4
Medi Imabari	56,047	2008	Magdalla 5/10 May	Singapore-Japan approx	\$13,500	Chart Not Rep	trip via East Coast South America	28/4
Ocean Glory	56,039	2006	Longkou 22/25 April	Singapore-Japan	\$12,000	Chart Not Rep	trip via South east Asia	17/4
Jasmine Halo	56,035	2005	West Coast India mid April	China approx	\$12,000	Chart Not Rep	trip via India	9/4
Sibulk Initiator	56,017	2007	Durban end April	Muscat-Singapore approx	\$24,000	Dreyfus	trip via East Coast South America	17/4
African Blue Crane	56,000	2007	Durban early May	Bangladesh approx	\$23,000	JKI	trip via East Coast South America	24/4
Aquitania	55,932	2006	Dahanu spot	China	\$12,400	Triumph		20/4
Yasa Ozcan	55,924	2006	Manzanillo early May	worldwide	\$17,500	Cargill	balance of period until 15 Sept 09-31 October 09 approx	23/4
KT Venture	55,866		aps USGulf 16/20 April	Continent	\$19,100	Clipper	trip	7/4
Aranda Colossus	55,814	2006	Tuticorin 24/30 April	China	\$16,350	Chart Not Rep	trip via West Coast India	22/4
Gemini Pioneer	55,624	2008	Magdalla early May	China	\$14,000	Farenco	trip	22/4
Gemini Pioneer	55,624	2008	Lanshan spot	Singapore-Japan approx	\$8,500	Chart Not Rep	trip via Nopac	3/4
Yasa Ilhan	55,518	2007	China end April	worldwide approx	\$12,000	Cargill	4/6 mos trading	17/4
Jin Yi	55,500	2007	WC India 15/25 April	China	\$12,000	Uniwel	trip	7/4
Tai Hunter	55,418	2007	North China Mid April	India	\$10,000	Oxbow	trip via USGulf	14/4
Dubai Energy	55,389	2004	West Coast India 19/25 April	China	\$13,850	Seawin	trip	17/4
Jin Xing	55,300	2007	Chennai spot	China	\$13,500	Chart Not Rep	trip	23/4
Zhe Hai 521	54,500	2008	Wenzhou 7/9 April	East Coast India	\$8,750	Chart Not Rep	option redel West Coast India 10500trip via Indonesia	8/4
Tawa Arrow	54,274	2008	Cape Town 17 April	Singapore-Japan	\$16,250	STX Pan Ocean	trip via East Coast South America	15/4
Desert Unity	53,800	2006	Lagos end April/early May	Malayasia	\$25,000	Star	trip via Brazil intention sugar	23/4
Taurus Two	53,630	2006	aps East Coast Mexico 20/25 April	Spain approx	\$20,500	Norden	trip	15/4

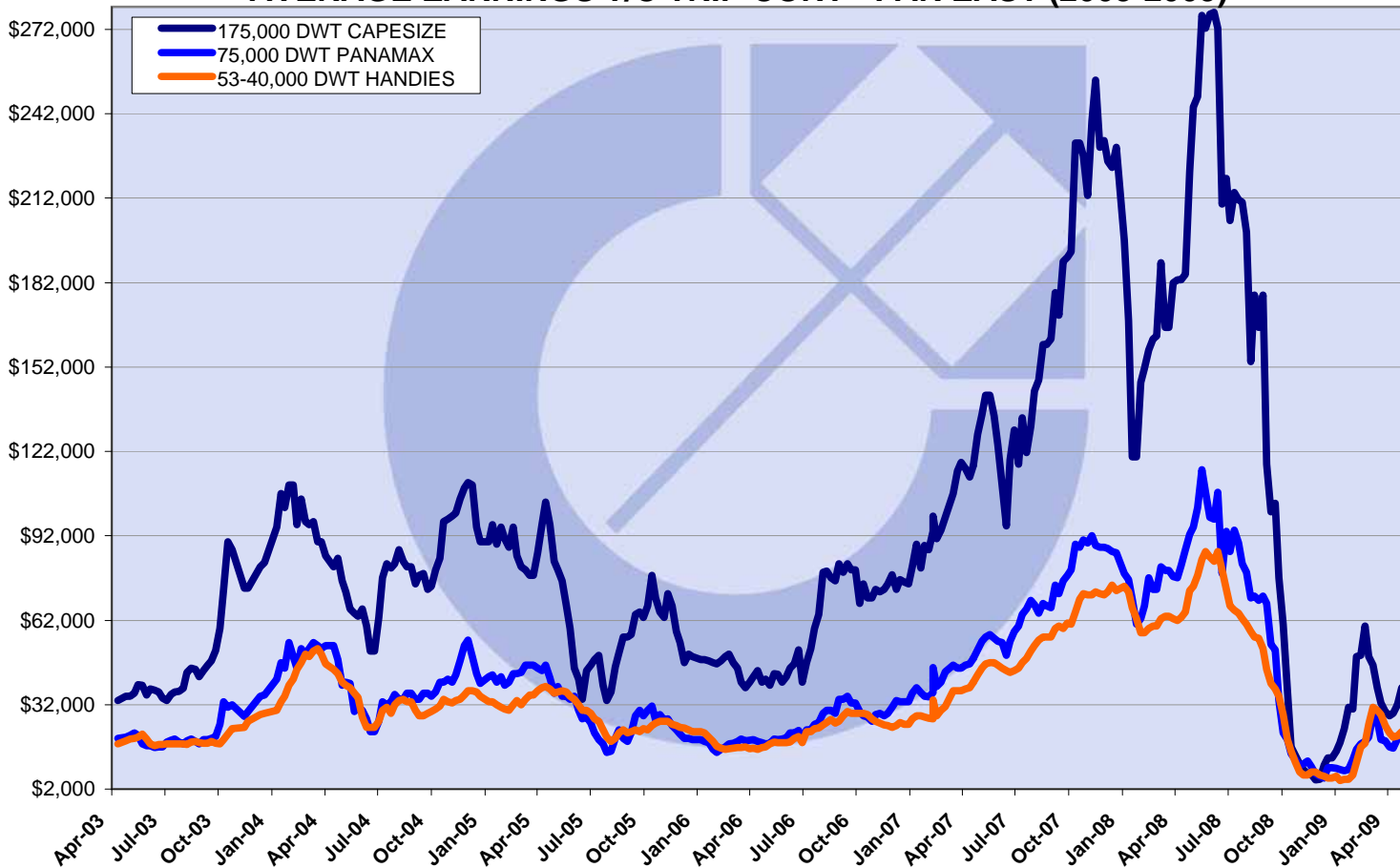
NAME	DWT	BLT	DELY	REDELY	RATE	CHARTERER	NOTES	DATE
Thermidor	53,594	2007	Magdalla 17/20 April	China	\$11,000	Seawin	trip via India	9/4
Iyo Wind	53,569	2008	Jakhau early April	China	\$10,000	Noble	trip	2/4
Maple Grove	53,556	2006	Hachinhoe early April	India approx	\$8,500	EBC	trip via Nopac	3/4
Port Moresby	53,553	2002	USGulf mid April	Muscat-Japan	\$22,000	GMI	trip	8/4
Navios Mercator	53,553	2002	Morocco early May	worldwide	\$17,000	WBC	4/6 mos trading	28/4
Fratzis Star	53,533	2005	CJK mid April	India approx	\$8,250	D'Amico	trip via Indonesia	8/4
CMB Biwa	53,505	2002	dop Kohsichang early April	Singapore-Japan	\$9,000	Oldendorff	trip via Indonesia	1/4
Magnum Energy	53,500	2009	Chennai 4/6 April	China	\$10,000	SKS Transnational	trip	3/4
Wren	53,500	2008	Chittagong 5/10 April	China	\$10,000	Uniwel	trip via India	1/4
Shanghai Venture	53,500	2007	Far East May	worldwide approx	\$11,000	AWB	2 years trading	24/4
Navios Astra	53,468	2006	Nantong mid April	Pacific approx	\$8,750	Armada	2 laden legs	8/4
Vivi	53,413	2008	South China spot	India	\$11,000	Chart Not Rep	trip	15/4
Shanghai Venture	53,410	2007	Navlakhi 13/15 April	China	\$11,750	Noble	trip	6/4
Pu Tuo Hai	53,393	2007	Guangzhou 11/13 April	India	\$8,500	Chart Not Rep	trip via Australia	7/4
City	53,352	2007	Haldia 10/12 April	China	\$12,750	Chart Not Rep	trip	8/4
Gem of Kilakarai	53,299	2005	West Coast India 20/25 April	China	\$11,500	Chart Not Rep	trip	14/4
Star Gama	53,098	2002	Lome 1/3 May	Atlantic approx	\$17,000	Armada	2/3 laden legs	30/4
Alitis	53,094	2002	Magdalla spot	India approx	\$13,000	Oldendorff	trip via South Africa	30/4
Ocean Prefect	53,055	2003	Haldia 8/10 May	redel China approx	\$11,500	Noble	trip -	29/4
Spar Draco	53,000	2006	East Coast India May	worldwide	\$12,000	Bunge	12 months trading	23/4
Kang Yu	52,988	2004	Savannah end April	Cont-Med approx	\$22,000	Armada	trip	23/4
Jin Cheng	52,961	2003	dop Ilichevsk mid April	Singapore-Japan	\$25,000	Daewo	Cargill relet - trip	14/4
Prabhu Daya	52,822	2001	Goa 8/9 April	China	\$14,000	Chart Not Rep	trip	2/4
Ermis	52,808	2004	Chennai 4/7 May	China approx	\$12,500	Chart Not Rep	trip	27/4
Tilos	52,630	1991	Singapore end April	India approx	\$10,500	Chart Not Rep	trip via Indonesia	15/4
Hector	52,512	2002	North China 15/30 April	worldwide approx	\$11,700	DBCN	11700 1st year approx - 13000 daily optional second year 1 option 1 year trading	9/4
Ocean Prince	52,475	2002	Haldia 5/7 April	China	\$13,500	Chart Not Rep	trip	2/4
Sea Lantana	52,471	2004	Aqaba 3/5 May	South east Asia	\$18,000	Fayette	trip via Black Sea	30/4
Star Theta	52,425	2003	Singapore end April	worldwide approx	\$12,000	Cargill	12 mos trading	22/4
Casta Diva	52,415	2006	West Africa early May	worldwide	\$17,000	Cargill	4/6 mos trading	23/4
Ocean Morning	52,404	2001	dop Huangpu spot	India	\$8,650	Oldendorff	TMT relet -trip via Indonesia	1/4
Ocean Princess	52,382	2002	USGulf end April	Med	\$19,000	Clipper	trip - Bunge relet	17/4
Rosita	52,292	2004	Chennai spot	China	\$10,000	Uniwel	trip	16/4
United	52,245	1993	West Coast India 9/13 April	China	\$9,500	Chart Not Rep	trip	2/4
Grigorpan	52,105	2002	Karachi 21-23 Apr	China	\$12,400	Tongli		20/4
Navios Herakles	52,068	2001	Japan end March	worldwide	\$12,000	Bunge	1 year trading	2/4
Jin Kang	52,000	2003	Bayuquan 17/19 April	India	\$8,000	Chart Not Rep	trip	14/4
Fermita	52,000	2001	Karachi 27/30 April	China	\$15,200	Transvast	trip via West Coast India	24/4
Jalma Topic	51,966	2006	aps Sfax early April	Brazil approx	\$9,000	Clipper	trip	2/4
Maria D	51,514	2002	Brazil end April	Indian Ocean	\$30,000	Chart Not Rep	trip	17/4
Global Oji	51,264	1998	aps Recalada 1/10 May	passing Durban	\$10,000	Bunge	275000 bb - Trip via South East Asia	21/4
VOC Gallant	51,215	2002	Dandong end April	China	\$11,000	North China Shipping	trip via Indonesia	28/4
Nueva Esperanza	50,955	2002	passing Durban 23 March	India	\$17,500	Dreyfus	trip via Brazil	9/4
Jin Li	50,777	2001	Tema 19/22 April	Atlantic approx	\$13,500	GMI	3/5 mos trading	17/4
Jin Ping	50,777	2002	Canakkale prompt	Far East	\$22,000	Glingrow	trip via Black Sea intention iron ore	16/4
Ero L	50,700	2003	Continent 21-30 Apr	worldwide	\$16,000	Cargill	4-6 months	20/4
RM Power	50,600	2004	PMO 22/29 April	China	\$10,850	Sundial	trip via India	17/4
Kaity L	50,437	2003	Chittagong spot	China	\$10,500	Noble	trip via East Coast India	8/4
Sea Lavender	50,326	2002	passing Durban spot	Iran	\$25,200	cnr	trip via East Coast South America	30/4
Maritime Jeongam	50,316	2002	Passero early April	North Coast South America approx	\$7,500	Eitzen	trip	1/4
Navios Meridian	50,316	2002	Lagos spot	Atlantic	\$13,500	Dreyfus	trip via East Coast South America	23/4

NAME	DWT	BLT	DELY	REDELY	RATE	CHARTERER	NOTES	DATE
Legend Phoenix	50,209	2002	East Coast South America early April	Singapore-Japan	\$17,000	Oldendorff	300000 bb -trip	3/4
Tern	50,209	2003	Port Harcourt 8/10 April	Black Sea	\$11,000	Oldendorff	trip via NC South America	7/4
Osprey 1	50,206	2002	East Coast India spot	Pakistan	\$8,500	Shadab	trip via South Africa	8/4
Saturnus	50,000	2008	PMO spot	PMO	\$10,000	Chart Not Rep	trip via Black Sea and PG	14/4
Alios	49,674	1983	Kandla spot	China	\$11,950	Chart Not Rep	trip via India	27/4
Mandarin Sun	49,240	2005	South China early April	worldwide approx	\$10,500	Oldendorff	3/5 mos trading	6/4
Kristin Picer	48,913	2001	USGulf end April	Spain	\$19,000	Clipper	trip	15/4
Robert Schulte	48,225	1997	dop Lagos 10/13 April	West Med approx	\$10,850	Eitzen	trip via East Coast South America	9/4
Ding Xiang Hai	47,787	2000	China 9/19 April	Durban-Dakar rge	\$5,750	Bertling	trip via China	2/4
Hardwar	47,311	1987	north China end April	Persian Gulf	\$7,000	North China Shipping	redel PMO - trip	27/4
Genco Success	47,000	1997	Lagos 28/30 April	Singapore-Japan approx	\$22,500	STX Pan Ocean	trip via Brazil	27/4
Luhai	46,702	1998	Chittagong 2/5 May	China	\$8,500	Seawin	trip via India	28/4
Stella Fomalhaut	46,700	1999	Mumbai 5/7 April	China approx	\$11,250	Hanjin	trip	3/4
Stove Trader	46,223	1999	US East Coast mid April	East Med	\$22,500	EMR	trip	3/4
Force Ranger	45,950	1996	Kohsichang mid April	Thailand	\$8,800	MUR	trip via Indonesia	7/4
Moorgate	45,875	1990	passing Durban spot	redel Malaysia	\$20,750	Dreyfus	trip via East Coast South America -	29/4
Sophia	45,758	1996	Singapore spot	East Africa	\$7,500	Chart Not Rep	trip via Malaysia	1/4
Storm Ranger	45,744	1995	passing Gibraltar mid April	Norway approx	\$12,000	Eitzen	trip via North Coast South America	8/4
Dubai Freedom	45,734	1994	Batangas 5/7 May	India approx	\$13,000	cnr -	trip via South east Asia	30/4
Efi Theo	45,423	1997	passing Durban spot	Nigeria	\$15,750	Nom (UK) Ltd	trip via Brazil	30/4
Vergo	45,320	1995	Dneprobugsky spot	Port Harcourt	\$10,500	Nom (UK) Ltd	trip	14/4
Agia	45,296	1994	USGulf mid May	Singapore-Japan intention scrap	\$25,500	Progress Bulkcarriers	trip	24/4
Sealady	45,100	1995	Luanda spot	East Med intention HBI	\$18,000	Duferco	trip via Orinoco	28/4
Yong An 1	44,072	1995	Visakhapatnam 28/30 April	Singapore-Japan	\$9,500	TMT	trip via East Coast South America	28/4
Teen	43,671	1995	Guangzhou early May	Pakistan	\$8,500	Shadab	trip via South east Asia	30/4
Krateros	43,595	1992	Tuticorin spot	India-Japan	\$12,000	Chart Not Rep	trip via Black Sea intention steels	2/4
Full Wealth	43,202	1995	Luanda 3/7 May	West Africa	\$13,500	Empros	trip via Brazil	30/4
Mosor	42,584	2001	Karachi 9/11 April	China approx	\$9,000	Seawin	trip via WC India	2/4
Sanko Rose	42,529	1995	USGulf end April	Cont-Med approx	\$20,000	Chart Not Rep	trip	23/4
Ulcas	42,244	1985	Singapore spot	Singapore-Japan approx	\$9,000	Chart Not Rep	trip via South east Asia	1/4
C.Emerald	42,174	1994	Paradip 22/29 April	China	\$7,600	Sundial	trip	16/4
JS Comet	42,018	1999	Luanda 2/3 April	WC South America	\$12,850	Norden	trip via ECSouth America	2/4
Trogir	42,000	2001	USGulf early April	Continent	\$16,000	Bulkhandling	trip	2/4
Sea Wind	41,377	1985	aps Mersin 14/20 April	Nigeria	\$11,750	Nom (UK) Ltd	11700 daily if bagged - 14250 daily if bulktrip with cement	7/4
Tassos N	41,343	1986	South Africa early April	PMO	\$12,000	Chart Not Rep	trip via East Coast South America and PG	6/4
Samanta	39,110	1992	EC Mexico early April	Atlantic	\$18,000	Armada	2/3 laden legs	2/4
Jin Prince	37,895	1986	Tuticorin 1/3 May	redel China	\$8,800	Sundial	trip via India -	29/4
Qing Ping Hai	37,744	1985	Chittagong spot	China	\$4,000	Chart Not Rep	trip via India	15/4
Fesco Ob	36,726	1986	Rizhao 2/6 April	West Africa	\$6,300	Chart Not Rep	trip	1/4
Thor Jasmine	36,663	1985	Arzew prompt	India	\$20,000	Chart Not Rep	trip via Black Sea	23/4
Smart	36,206	1982	Skaw 24-25 Apr	Egypt	\$12,000	Imperial		20/4
Smaragda	35,370	1984	Durban 1/3 May	redel Montreal	\$10,000	Fortuna Seaside	trip via Brazil -	29/4
Solent	35,200	2002	Skaw 20 Apr	Egypt	\$13,500	Imperial		20/4
Tolmi	30,976	1989	Novorossiysk prompt	redel Tunisia	\$14,500	Transatlantica	trip -	29/4
Doxa D	30,850	1984	Cannakale 20-30 Apr	West Africa	\$10,250	Conti GMT		20/4
Ocean Land	30,000	1984	London spot	India	\$17,200	Navision	trip via Continent	30/4

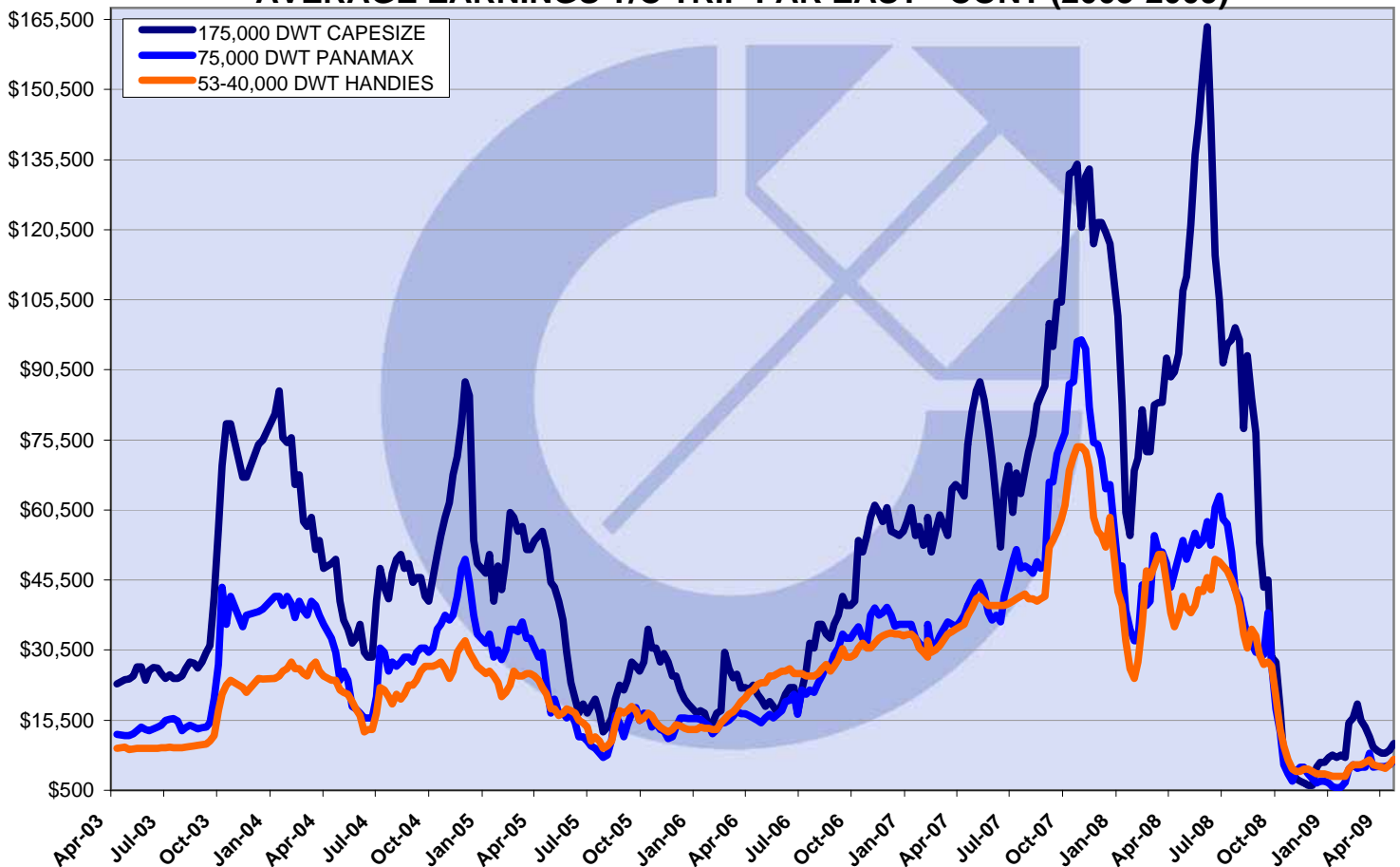
NAME	DWT	BLT	DELY	REDELY	RATE	CHARTERER	NOTES	DATE
Eleni T	29,071	1997	aps Recalada spot	Algeria	\$10,250	Dreyfus	trip - 190,000 B/B	17/4
Cape Scott	28,747	1997	Richards Bay 2/4 April	WCSouth America	\$9,000	Chart Not Rep	trip via ECSouth America	2/4
Katherine	28,711	1997	Douala 21-26 Apr	China	\$12,500	Charterer not reported		20/4
Sofie Bulker	28,700	2007	Novorossysk 24-27 Apr	Morocco	\$11,000	Oldendorff		20/4
Bering ID	28,611	1997	Port Harcourt 6/7 April	WCSouth America	\$10,100	Ultrabulk	trip via ECSouth America	8/4
Laurel Island	28,556	2005	Ube 27 April	Singapore-Japan rge approx	\$6,200	STX Pan Ocean	trip via NoPac	28/4
Kingfisher D	28,425	2002	Conakry prompt	redel St Petersburg approx	\$13,000	Oldendorff	trip -	29/4
Inase	28,400	2008	Changjiangkou end April/early May	West Africa	\$7,000	Chart Not Rep	trip	28/4
Helga	28,358	2008	Gibraltar prompt	West Africa	\$12,700	Sometra	trip via north France	27/4
Seaguardian II	28,251	1984	psg 90 deg W enroute Houston 23/26 April	Nigeria	\$16,350	Nom (UK) Ltd	trip	23/4
CN Jumbos	27,321	1995	Concepcion Bay mid April	UK/Continent	\$10,000	Navision	trip	8/4
Great Gain	27,140	1998	Singapore 19/20 April	Singapore-Japan rge	\$7,000	Chart Not Rep	trip via West Australia	8/4
You Yue	26,796	1992	retro Douala 30 March	Aughinish	\$8,000	Oldendorff	trip via Conakry	2/4
Evangelos	26,591	1985	Canakale 23-25 Apr	West Africa	\$9,500	Conti GMT		20/4
Jupiter Bright	26,541	1985	Singapore 4/5 May	redel south China	\$7,250	Shinyang	trip via Indonesia -	29/4
Sophie Bolten	26,412	1996	Novorossiysk 24/27 April	Morocco	\$11,000	Oldendorff	trip	21/4
Cosmos Verde	24,838	1999	Japan 21/23 April	Singapore-Japan rge	\$5,300	Chart Not Rep	trip via Nopac	17/4
Master	24,000	1997	Changjiankou 23/28 April	Brazil	\$5,500	Asan MM	trip via S.Korea	16/4
Lucy Oldendorff	22,160	1992	Antwerp 16/18 April	West Africa	\$10,500	Sometra	trip	9/4
Kent Timber	20,427	1999	Shanghai early May	redel Singapore-Japan rge approx	\$6,900	POST	About 60 days trading	29/4
Nichio Maru	15,177	1992	Cape Passero 29 Apr-4 May	Skaw-Cape Passero	\$15,000	Cargill		20/4

red colour indicates vessel prior fixing failed

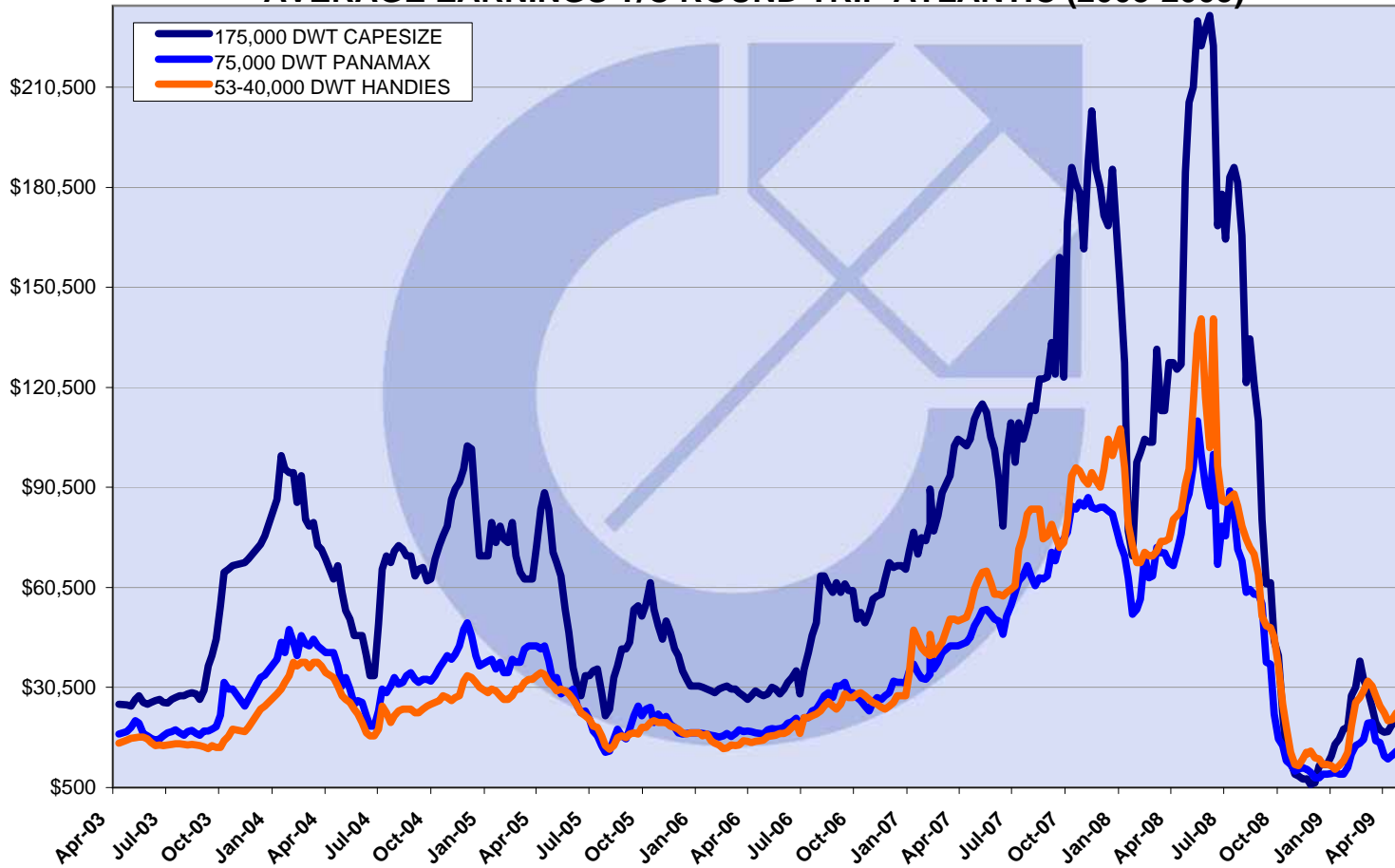
### AVERAGE EARNINGS T/C TRIP CONT - FAR EAST (2003-2009)



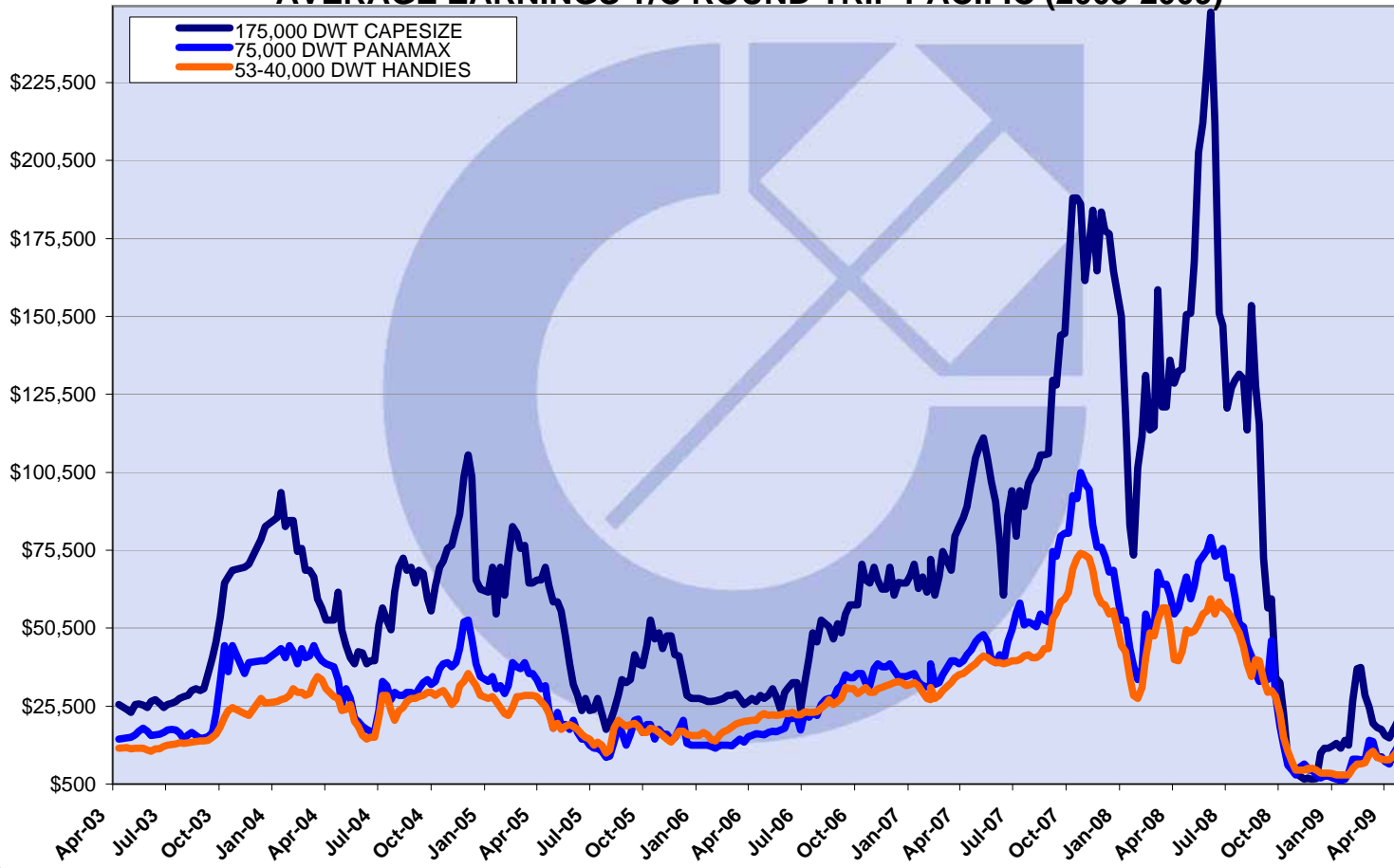
### AVERAGE EARNINGS T/C TRIP FAR EAST - CONT (2003-2009)



### AVERAGE EARNINGS T/C ROUND TRIP ATLANTIC (2003-2009)



### AVERAGE EARNINGS T/C ROUND TRIP PACIFIC (2003-2009)



### AVERAGE EARNINGS T/C 12 MONTHS (2003-2009)

