

NAME	DWT	BLT	DELY	REDELY	RATE	CHARTERER	NOTES	DATE
Yasa Dream	207,805	2008	Fangcheng 18/20 July	worldwide	\$57,000	TMT	5/7 mos trading	10/7
Mineral Dalian	180,000	2009	ex yard Dalian 15/17 July	worldwide	\$45,500	TMT	Newbuilding - 11/13 mos trading	9/7
Giant Ace	180,000	2009	ex yard Hyundai end July	worldwide approx	\$43,500	Cosbulk	Newbuilding - 11/13 mos trading	9/7
KLine TBN	180,000	2009	ex yard Kawasaki November 2009	worldwide	\$33,000	Cargill	22/24 months trading	17/7
Samonas TBN	180,000	2009	ex yard Jinhae April/May 2010	worldwide	\$31,000	STX Pan Ocean	35/37 months trading	17/7
Aqua TBN	180,000	2009	ex yard Odense Oct 09/Jan 2010	worldwide	\$35,000	Dreyfus	3 years trading	17/7
Cape Canary	180,000	2009	newbuilding 180000	worldwide	\$33,000	Chart Not Rep	ex yard Kawasaki mid 2010 22/24 months trading	20/7
Athenian Phoenix	179,223	2009	Ulsan 16/22 July	China approx	\$65,000	Seawin	trip via Australia	16/7
Elegant Star	177,216	2005	retro Beilun 16 July	China	\$62,500	BHP Billiton	trip via West Australia	22/7
Sapientza	177,000	2008	Cape Passero prompt	China	\$88,500	Noble	trip via Brazil	16/7
Ugo De Carlini	176,500	2009	ex yard delivery Jinhaiuan, Zhoushan	worldwide	\$31,500	Minmetals	Singapore-Japan rge Jan/July 2010 5 years trading	21/7
Successor	174,000	2007	worldwide March/May 2010	worldwide	\$30,000	Cargill	35/37 months trading	17/7
Mona Pegasus	172,571	2000	Rotterdam end July/ely Aug	Skaw-Cape Passero	\$69,000	Classic Maritime	Transatlantic Round	27/7
SA Fortius	172,100	2001	Zhoushan 24/28 July	worldwide	\$64,500	Cosbulk	trip via West Australia	17/7
Anangel Vision	171,810	2007	Zhangjiang 4/6 Aug	China	\$58,000	BHP Billiton	Louis Dreyfus relet - Trip via Whyalla	30/7
Anangel Vision	171,810	2007	China Aug/Sept 2009	worldwide	\$35,000	Louis Dreyfus	22/24 months trading	2/7
Ocean Cosmos	171,191	2000	Sines 7/12 July transatlantic round	Skaw-Cape Passero	\$66,000	Classic Maritime	option redely Spore/Jpan \$85000	7/7
Ocean Cosmos	171,191	2000	Sines 9/11 July	PMO approx	\$85,000	Cargill	Classic Maritime relet - trip via Narvik option Seven Islands & PG	10/7
Constantia	171,039	1996	worldwide January 2010	worldwide	\$32,000	Vitol	2 years trading	17/7
Aquabreeze	171,012	2003	Lianyungang 30/31 July	China	\$53,000	Seawin	J.Aron relet - trip via Australia	27/7
Mona River	171,012	2000	ARA 30/31 July	China	\$92,000	Shourong	trip via Narvik	27/7
Andros Warrior	171,000	1986	China d/c mid Aug	China	\$40,000	Vitol	trip via W Australia	28/7
Cape Lotus	170,780	2000	retro Kimitsu 8 July	Continent	\$34,000	Bunge	trip via Richards Bay	17/7
Bulk Asia	170,578	2001	Worldwide Sept/Oct 2009	worldwide	\$34,500	Bunge	29/33 months trading	14/7
Alpha Millennium	170,415	2000	Cape Passero 10/12 Aug	ARA	\$75,000	Cosbulk	NYK Europe relet - trip via Drummond	28/7
Katerina Warrior	170,082	1997	Singapore ppt	China	\$45,000	Parakou Shipping	405000 gross bb - trip via Brazil	27/7
Cape Pioneer	170,012	2005	Qingdao 2/5 Aug	China	\$54,000	BHP Billiton	trip via West Australia	30/7
Paschalis D	169,200	2002	Xingang prompt	China approx	\$50,000	Rio Tinto	trip via Australia	15/7
Daphne	169,169	1999	Immingham 12/14 July	China	\$61,000	Rio Tinto	trip via Seven Islands	10/7
Maria A Angelicoussi	169,163	2001	Ijmuiden 21/25 Aug	Ijmuiden	\$77,500	Oldendorff	Bunge relet - trip via Seven Islands	29/7
Marvellous	169,150	2000	Dalian 7/10 July	China	\$73,000	Cargill	Coscobulk relet - trip via W Australia	1/7
Maha Anosha	169,102	2009	Cape Passero 3/5 Aug	Skaw-Passero	\$60,000	Swiss Marine	transatlantic round voyage - Cosco relet	23/7
Aquagem	167,102	1997	Rizhao 15/19 July	China	\$49,000	Seawin	Cosco relet - trip via Australia	16/7
Heythrop	165,729	1996	south China 17/18 July	China	\$55,000	Rio Tinto	trip via West Australia	17/7
Anangel Solidarity	161,545	1993	ex dd Zhoushan 20/25 July	worldwide	\$53,000	Oldendorff	5/7 mos trading	16/7

NAME	DWT	BLT	DELY	REDELY	RATE	CHARTERER	NOTES	DATE
Aquabella	161,010	1995	Zhangjiang 7/10 Aug	China	\$50,000	Seawin	Cosbulk relet - trip via West Australia	29/7
China Fortune	152,011	1992	China July/Aug	worldwide	\$39,000	Swiss Marine	11/13 months trading	20/7
C. Laurel	151,380	1990	Caofeidian 28/30 July	Singapore-Japan rge	\$46,000	Noble	2 laden legs	22/7
Samsara	150,393	1995	Fangcheng prompt	China	\$53,000	Dreyfus	trip via Brazil	16/7
C.Harmony	149,321	1994	Guangzou 26-28 July	worldwide	\$48,200	Vitol	4/6 mos trading	16/7
C.Harmony	149,321	1994	ex dry dock Guangzhou 24/26 July	China	\$46,000	STX Pan Ocean	trip via Brazil	22/7
Coppersmith	148,735	1995	South China 29/30 July	China	\$37,500	Noble	trip via Brazil	16/7
Silver Constellation	146,351	1986	Qingdao 20/30 July	China	\$28,000	South Ocean	trip via Chile	20/7
Good News	138,000	1982	China mid July	China	\$24,000	SST	trip via Boca Grande	1/7
Loxandra	93,000	2007	Taiwan 24/27 July	S.China	\$25,000	Rio Tinto	trip via West Australia	23/7
Chiara DAmato	93,000	2009	Cape Passero spot	Singapore-Japan rge	\$43,000	Chinese chrtr	trip via Orinoco	31/7
Pergamos	92,832	2007	Continent 1/10 Aug	China	\$55,000	Chinese chrtr	trip via Nouadhibou	23/7
Kyzikos	92,598	2007	retro Singapore 24 July	Hong Kong	\$30,000	BHP Billiton	trip via Richards Bay	28/7
Eptalofos	92,576	2007	aps Orinoco mid July	China	\$43,000	Pacific Bulk	750000 gbb - trip	7/7
Stalo	87,000	2005	S.Africa 1/10 Aug	Taiwan	\$42,500	CSE Transport	850000 bb - trip via Brazil	30/7
Tiare	84,000	2009	Vizakhapatnam spot	Singapore-Japan rge	\$29,000	Chart Not Rep	trip via EC South America	22/7
Star of RBD	84,000	2008	Fangcheng 27/29 July 5/7 months trading	worldwide	\$25,000	Cobelfret	Rizzo-Bottiglieri-De Carlini Armatori Spa relet	24/7
Star of Dubai	83,611	2008	Fangcheng spot 5/7 months trading	worldwide	\$24,750	Swiss Marine	Rizzo-Bottiglieri-De Carlini Armatori Spa relet	23/7
Orange Truth	83,051	2006	Kemen 21/22 July	Malaysia	\$22,000	PCL	trip via Indonesia	21/7
Erica	83,000	2009	PMO 27/30 July	Skaw-Passero rge	\$19,000	Chart Not Rep	trip via Richards Bay	17/7
Clipper Suffolk	82,788	2006	Wilhelmshaven 11/15 July	China	\$38,500	Noble	trip via St.Lawrence	8/7
Iron Kalypso	82,769	2006	aps Bolivar 18/22 July	PortoTorres	\$32,000	Norden	600000 bb - trip	9/7
Billion Trader	82,769	2005	Yantai 3/6 July	Italy	\$15,000	Fednav	trip via Red Dog	6/7
Nord Phoenix	82,656	2007	Gijon 21/31 July	Skaw-Cape Passero	\$39,000	Augustea	trip via USEC	20/7
United Challenger	82,641	2008	Montoir 18/19 July	Skaw-Passero rge	\$33,000	Armada	trip via Kamsar	17/7
Ellina	82,612	2008	retro Japan 21 July	Hong Kong	\$21,000	BHP Billiton	trip via Indonesia	29/7
Beijing 2008	82,561	2007	Jintang 2/4 Aug	Singapore-Japan rge	\$23,000	Chart Not Rep	trip via NoPac	30/7
Bulk Brazil	82,500	2008	Cape Passero 11/14 July	Skaw-Cape Passero	\$29,000	Oldendorff	trip via NC South America	10/7
Prem Vasha	82,379	2006	Black Sea 7/10 Aug	China int ore	\$49,000	Richstone	trip	29/7
Fortune Rainbow	82,372	2008	Xingang spot	EC India	\$21,000	Oldendorff	trip via EC Australia	1/7
Iron Vassilis	82,295	2006	Lianyungang 1/5 Aug	Med via Suez	\$14,000	Daeyang	trip via Indonesia	31/7
Iron Lindrew	82,191	2007	Puerto Prodeco prompt 2 laden legs	Skaw-Passero rge approx	\$32,500	Bunge	625000 bb - Bunge	3/7
Vathy	82,000	2009	ex yard Japan Feb 2 years trading	worldwide	\$16,750	Cosbulk	Newbuilding	9/7
Fortune Miracle	82,000	2009	Nagoya 16/18 July	Far East	\$20,250	Chart Not Rep	trip via NoPac	14/7
Okinawa	81,397	1999	Kagokawa 2/4 July	Taiwan	\$23,250	CSE Transport	trip via EC Australia	2/7
Sea of Harvest	81,000	2009	Japan ppt	EC India	\$22,500	Noble	trip via EC Australia	1/7
Lake Dahlia	78,802	2009	Goa 20/24 July	Continent	\$21,500	Noble	trip via ECSouth America	16/7
Triton Gannet	78,802	2009	Rizhao 22/25 July	worldwide	\$20,750	Danzas	11/13 months trading	17/7
Triton Gannet	78,802	2009	Rizhao 25/27 July	Japan	\$22,500	NYK	trip via Philippines	23/7
Atlantic Pride	78,434	1981	Mailiao 9/10 July	Singapore-Japan rge	\$12,000	Chart not Rep	trip via EC South America	9/7
Giant Sky	78,189	2008	Krishnapatnam 10/12 July	Japan	\$29,000	Oldendorff	trip via EC India	6/7
Hebei Arrow	78,165	1985	retro Yuhuan 29 June	China	\$16,500	Richstone	trip via Black Sea	3/7

NAME	DWT	BLT	DELY	REDELY	RATE	CHARTERER	NOTES	DATE
Tai Progress	77,834	2004	Ghent 10/15 July	Dunkirk	\$32,000	Louis Dreyfus	STX Pan Ocean relet - trip via Port Cartier	2/7
Tai Progress	77,834	2004	Dunkirk 3/5 Aug	Skaw-Cape Passero	\$34,000	ABT	2 laden legs 1st Ponta Da Madeira/US Gulf	29/7
Giuseppe Rizzo	77,684	2004	Zhangjiagang 5/10 July	Singapore-Japan rge	\$23,000	Grand China Shipping	TMT relet - 2 laden legs 1st leg Indonesia/Taiwan	6/7
Apollo	77,326	2006	Xingang 10/12 July	China	\$22,000	BHP Billiton	trip via EC Australia	6/7
Nordpol	77,220	2002	Hunterston 22/25 July	China	\$38,500	Cosco	trip via Nouadhibou	10/7
Christina	77,073	2007	Xingang 12/15 July	Taiwan	\$19,000	China Steel Express	trip via EC Australia	13/7
G.B. Corrado	77,061	2008	Shanghai spot	China	\$22,500	BHP Billiton	trip via Hay Point	2/7
Shining Bliss	76,939	2007	Jebel Ali 14/16 July	Singapore-Japan rge	\$25,000	Chinese	trip via EC South America	10/7
Achilles	76,878	2004	Nagoya 29/31 July	China	\$22,000	Oldendorff	trip via Newcastle	23/7
Ascanius	76,878	2004	Dalian 28 July/2 Aug	worldwide	\$22,500	Oldendorff	4/6 months trading	21/7
Thor	76,838	2005	aps ECSAmerica 15/20 July	Singapore-Japan rge	\$38,000	Chart not Rep	850000 BB - trip	3/7
Lord Byron	76,838	2005	Ei Dekheila 10/12 July	Far East	\$40,500	Chart not Rep	trip via Black Sea	8/7
Anastasia C	76,830	2004	Valencia 13/15 July	worldwide	\$28,500	Practica	5/6 mos trading	9/7
Lowlands Nello	76,830	2004	Tuzla 25/27 July	Cape Passero	\$35,000	STX Pan Ocean	trip via N.France & Egypt	27/7
POS Dignity	76,801	2004	Youngheung 1/5 Aug	China	\$23,000	Chart Not Rep	trip via EC Australia	29/7
Bison	76,773	2005	PMO 19/26 July	Singapore-Japan rge	\$26,750	Chart Not Rep	trip via ECSouth America	15/7
Belgrano	76,759	2004	Nantong 8/12 July	EC India	\$22,250	SK Shipping	trip via EC Australia	2/7
Belgrano	76,759	2004	Nantong 23/25 July	worldwide	\$22,500	K Line	3/5 months trading	23/7
Maritime Asia	76,737	2004	CJK spot	China	\$22,000	North China Shipping	trip via EC Australia	2/7
Fortune Princess	76,635	2007	Taichung 11/14 July	Japan	\$19,500	Chart not Rep	trip via Indonesia	9/7
Hao Ying	76,634	2002	CJK 19/21 July	worldwide	\$18,250	Great Pacific Navigation	2 laden legs	8/7
Red Rose	76,629	2003	Wilhelmshaven ppt	Skaw-Cape Passero	\$30,000	Swiss Marine	2/3 laden legs	8/7
Avoca	76,629	2004	Jintang 19/20 July	Singapore-Japan rge	\$19,250	Chart Not Rep	trip via Australia	15/7
Andrea DAmato	76,619	2008	Lianyungang 7/10 July	India	\$24,000	Chart not Rep	trip via EC Australia	6/7
Km Imabari	76,619	2009	N.China 10/20 Aug	worldwide	\$20,000	Farenco	2 years trading	20/7
Fair Lady	76,608	2005	Oita 23/26 July	Singapore-Japan rge	\$24,250	PCL	trip via Nopac int petcoke	21/7
Filomena L	76,602	2003	Beilun spot	Singapore-Japan rge	\$21,000	Chart Not Rep	trip via Australia	16/7
Medi Antwerp	76,600	2007	Passero 20/25 July	Japan	\$40,500	TTMI	trip via USGulf	17/7
Double Rejoice	76,598	2006	Hamburg 27 July/5 Aug	Italy	\$40,000	United	trip via Baltic	24/7
Double Rejoice	76,598	2006	retro Cape Passero 3 July	Skaw-Cape Passero	\$28,000	Chart not Rep	trip NC South America	8/7
IVS Pinotage	76,597	2005	Skaw 9/12 July	worldwide	\$31,000	United Bulk Carriers	4/6 mos trading	9/7
IVS Pinotage	76,597	2005	Praia Mole 15/18 Aug	worldwide	\$33,500	Louis Dreyfus	710,000 bb - 2/3 laden legs via EC South America	20/7
Golden Sakura	76,596	2007	Hong Kong 19/20 July	China	\$23,500	Chart Not Rep	trip via Australia	16/7
Golden Sakura	76,596	2007	Hong Kong mid July	worldwide	\$18,500	Pacific Bulk	2 years trading	1/7
Red Jasmine	76,595	2006	Amsterdam 27 July/2 Aug	worldwide	\$35,300	Sinochart	Cosbulk relet - 4/6 mos trading	24/7
Red Jasmine	76,595	2006	aps N.France end July/early Aug	Egyptian Med	\$36,500	Egyptian Bulk Carriers	150000 bb - Sinochart relet - trip	28/7
Atlas Island	76,554	2008	Zhanjiang 23/28 July	Japan	\$21,500	Chart Not Rep	trip via Indonesia	20/7
Imabari NB	76,500	2009	ex yard Imabari 5/10 July	Singapore-Japan rge	\$22,500	Oldendorff	trip via Nopac	3/7
Ostria S	76,500	2008	Shanghai 29/31 July	Malaysia	\$23,500	Marubeni	trip via NoPac	30/7
Red Lily	76,500	2004	Singapore 10/15 Aug	China	\$26,500	Sinoeast	trip via EC Australia	30/7
POS Eternity	76,498	2005	Trincomalee ppt	China	\$33,500	Jaldhi Overseas	STX Pan Ocean relet - trip via EC India	29/7
Ikan Kerapu	76,447	2005	Goa 20/25 July	China	\$26,000	Jaldhi	trip via EC India	20/7

NAME	DWT	BLT	DELY	REDELY	RATE	CHARTERER	NOTES	DATE
Maritime Christine	76,436	2004	Gibraltar 24/25 July	Singapore-Japan rge	\$38,500	Hanjin	trip via US east coast	15/7
Ocean Prince	76,423	2004	Portbury 10/12 July	China	\$38,000	Fairwind	trip via St.Lawrence	1/7
Trafalgar	76,397	2001	Singapore-Japan rge August	worldwide	\$21,000	Daebo	11/13 mos trading	16/7
Prabhu Yuvika	76,310	2004	Taiwan 7/9 July	Japan	\$23,000	K Line	trip via Indonesia	1/7
Maritime Baqui	76,300	2006	Dunkirk 23/25 July	Continent	\$36,000	Suek	2 consecs via Murmansk	21/7
Mineral Star	76,286	2005	Phu My 3/5 Aug	Singapore-Japan rge	\$25,000	Norden	Swiss Marine relet - trip via Indonesia	30/7
Eleftheria	76,099	2001	Zhangzhou 13/15 July	worldwide	\$18,000	Bunge	12/14 mos trading	10/7
Efrossini	76,015	2003	PMO 15/17 Jul	Singapore-Japan rge approx	\$25,750	Chart Not Rep	trip via EC South America	10/7
Fu May	76,015	2002	Dalian 16/20 July	worldwide	\$21,000	Chart Not Rep	6/7 mos trading	16/7
Crown Star	76,000	2002	Taichung spot	Singapore-Japan rge	\$22,500	Oldendorff	trip via EC Australia	2/7
Botafogo	76,000	2001	ex drydock Zhoushan 8/9 July	Singapore-Japan rge	\$18,750	Eitzen	Norden relet - trip via Nopac	8/7
Navios Star	76,000	2002	Zhanjiang 28/30 July	Hong Kong	\$24,000	Oldendorff	trip via Indonesia	24/7
Anna S	75,966	2001	retro Fujairah 7 July	Aden-Japan rge	\$30,000	Chart Not Rep	trip via EC South America	20/7
Perla Bulker	75,949	2007	Shanghai 15/20 July	China	\$19,000	AHT	trip via Philippines	9/7
Medi Kobe	75,924	2001	ECIndia 20/23 July	Singapore-Japan rge	\$28,000	Noble	trip via ECSouth America	16/7
Yomoshio	75,921	2001	S.China 15/20 July	China	\$18,250	Farenco	trip via Australia	10/7
Torm Bornholm	75,912	2004	Xingang spot	Singapore-Japan rge	\$18,000	Louis Dreyfus	trip via NoPac	10/7
Loch Lomond	75,845	2002	Skaw 17/18 July	Atlantic	\$28,000	Bunge	2 laden legs via USEC and Brazil	10/7
Baltia	75,775	2005	Civitavecchia 10/15 July	worldwide	\$31,750	Chart not Rep	Farenco relet - bop 10 Nov/10 Dec	2/7
Marvellous	75,742	2002	Porto Torres 13/15 July	Singapore-Japan rge	\$36,000	Suisse Atlantique	trip via US Gulf	9/7
Medi Rotterdam	75,735	2002	Longkou ppt	China int coal	\$19,250	Noble	trip via EC Australia	7/7
Red Iris	75,730	2003	Rotterdam 18/20 July	Passero	\$34,000	Cargill	trip via Murmansk + Croatia	15/7
Navios Hyperion	75,707	2004	Hansaport 18/19 July	worldwide approx	\$32,500	STX Pan Ocean	min5/max 7 months trading	17/7
Coronado	75,706	2000	Far East mid Aug	worldwide	\$18,250	S.Korean chrtr	27/30 months trading	23/7
Dannan Island	75,637	2006	Noshiro 11/14 July	Singapore-Japan rge	\$21,500	Chart not Rep	trip via NoPac	8/7
Yasa Team	75,621	2006	EC India 1/7 July	China	\$26,000	Uniwel	trip	1/7
Yasa Team	75,621	2006	Jintang 1/10 Aug	worldwide	\$24,500	Chart Not Rep	4/6 months trading	28/7
Red Seto	75,597	2002	Adabiya 9/18 July	China	\$35,000	Richstone	trip via Black Sea	1/7
Anna	75,592	1999	retro Shanghai 15 July	India	\$22,000	BHP Billiton	trip via EC Australia	20/7
Ligari	75,583	2004	Antwerp end July	worldwide	\$34,000	United	4/6 months trading	21/7
Yasa Unity	75,580	2006	Lanshan ppt	Skaw	\$14,000	BHP Billiton	trip via Hay Point	8/7
North Prince	75,542	1999	Lianyungang 17/18 July	Singapore-Japan rge	\$22,500	Oldendorff	trip via Australia	16/7
Goya	75,500	2008	Nanjing 5/10 July	China	\$22,000	BHP Billiton	trip via EC Australia	2/7
Peppino DAmato	75,500	2005	Cape Passero 25/27 July	Spain	\$34,000	Bunge	trip via Ponta Da Madeira	20/7
Petka	75,480	1994	Gibraltar 19/23 July	China	\$34,000	Noble	trip via St.Lawrence	2/7
Richmond	75,473	1995	Singapore-Japan early August	worldwide	\$18,000	GMI	11/13 mos trading	16/7
Yue Dian 6	75,400	2005	Huangpu 24/26 July	China	\$20,000	Chart Not Rep	trip via Indonesia	21/7
Bariloche	75,395	2007	Qingdao 2/5 July	Japan approx	\$21,000	Shinwa	Alfred C.Toepfer relet - trip via EC Australia	2/7
Nordtrave	75,323	2001	Rotterdam 13/15 July	UKC	\$29,500	Swiss Marine	Klaveness relet - trip via Baltic	8/7
Nordtrave	75,323	2001	Portbury 25/27 July	Continent	\$36,000	Suek	2 consecs via Baltic	23/7
Arethusa	75,319	2001	Tianjin 27 July/4 Aug	worldwide	\$23,250	Oldendorff	4/6 months trading	23/7
Prabhu Satram	75,296	2004	Nantong 27/28 July	worldwide	\$20,000	Cosco Oceania	11/13 mos trading	9/7
Prabhu Satram	75,296	2004	Nantong 1/3 Aug	Japan	\$23,000	Shinwa	trip via EC Australia	31/7

NAME	DWT	BLT	DELY	REDELY	RATE	CHARTERER	NOTES	DATE
Ever Mighty	75,265	1996	Kushiro 27/30 July	Singapore-Japan rge	\$20,500	Dreyfus	trip via Nopac	17/7
Maria Bottiglieri	75,265	1995	Shekou 24/27 July	EC India	\$22,000	BHP Billiton	trip via EC Australia	22/7
Giovanni Battista Bottiglieri	75,265	1999	retro Cape Town 13 July	Taiwan	\$40,000	China Steel Express	trip via Brazil	20/7
Nordmosel	75,257	2001	Sines 17/20 July	Le Havre	\$32,500	Cetragpa	trip via Prodeco	13/7
Astrale	75,233	2000	Singapore mid July	Singapore-Japan rge	\$20,500	Louis Dreyfus	trip via EC South America	8/7
Audax	75,220	2001	Taichung 1/3 Aug	worldwide	\$23,750	Oldendorff	4/6 months trading	29/7
GH Fortune	75,214	2002	PMO ppt	Brindisi	\$15,000	STX Pan Ocean	trip via Richards Bay - Bunge relet	31/7
Oceanis	75,211	2001	S.Korea or China end Jul/ely Aug	worldwide	\$18,000	Bunge	11/13 mos trading	9/7
Strigla	75,205	2009	Chiba ppt	China	\$19,250	Chinese	trip via EC Australia	9/7
Dione	75,172	2001	PMO 7/10 Aug 45/70 days trading	worldwide	\$25,000	Komrowski Bulk Shipping	CTP relet	22/7
Avra	75,169	2001	Taichung in d/c 1/3 Aug	worldwide	\$20,000	STX Pan Ocean	1 years trading	24/7
Ecostar G.O.	75,149	2007	Mumbai ppt	Singapore-Japan rge	\$25,500	Louis Dreyfus	trip via EC South America	1/7
Voge Prosperity	75,100	1995	Gangavaram spot	China	\$26,000	Noble	trip via Chennai	2/7
Thalia	75,100	2000	Taichung ppt	Hong Kong	\$18,000	BHP Billiton	trip via Indonesia	1/7
Thalia	75,100	2001	Hong Kong 20/30 Aug	Singapore-Japan rge	\$24,000	NYK	trip via Indonesia	27/7
Ji Mei Long	74,920	1982	Rizhao 22/30 July	China	\$12,850	Richstone	trip via Black Sea	8/7
De Ping Hai	74,819	2002	Hong Kong 10/14 July	Singapore-Japan rge	\$22,000	Noble	trip via Australia	1/7
Angelic Glory	74,750	2002	Porto Torres 18/20 July	Skaw-Passero rge	\$30,000	Chart Not Rep	Transatlantic round voyage	15/7
Samjohn Amity	74,744	1998	Hong Kong end July	India	\$21,000	STX Pan Ocean	K2 relet - trip via Indonesia	21/7
Aldebaran	74,677	2000	Nantong 7/12 July	Taiwan	\$20,000	China Steel Express	trip via Queensland	6/7
Salandi Clipper	74,502	2009	San Cyprian 11/13 July	Skaw-Passero rge	\$30,000	Cargill	Transatlantic round voyage	3/7
Pearl Seas	74,483	2006	Rizhao spot	Singapore-Japan rge	\$17,750	Chart Not Rep	trip via NoPac	14/7
lolcos Unity	74,476	2006	Surabaya 15/25 July	China	\$27,500	Oldendorff	Bunge relet - trip via Indonesia	2/7
Coral Seas	74,432	2006	Worldwide Jan/Mar 2010	worldwide	\$15,750	Alfred C.Toepfer	23/25 mos trading	1/7
Geosand	74,432	2005	Sual 25/31 July	worldwide	\$20,000	Dreyfus	4/6 mos trading	15/7
F.D. Salvatore Pollo	74,405	2007	Xingang 16/18 July	worldwide	\$19,000	Deiulemar	10/12 months trading	17/7
Yong Li	74,382	2001	Kohsichang 26/31 July	China	\$18,000	Oceanvast	trip via West Australia	16/7
Coronis	74,381	2006	Shekou 10/20 July	India approx	\$22,000	British Marine	trip via Indonesia	2/7
Clipper Emperor	74,381	2000	Cape Passero ppt	E.Med	\$30,000	Cerraghil	trip via Baltic	31/7
Clipper Monarch	74,381	2000	Dunkirk 30/31 July	UKC	\$32,000	Atlantic Coal and Bulk	trip via Baltic	30/7
Medi Tokyo	74,356	1999	Cape Passero 12/15 July	Skaw-Cape Passero	\$29,500	Cobelfret	2 laden legs	1/7
Ever Shining	74,346	1999	Mailiao 1/3 Aug	Taiwan	\$24,000	STX Pan Ocean	trip via EC Australia	30/7
Aeolian Breeze	74,255	2001	Zhoushan 19/20 July	Taiwan	\$20,000	Noble	trip via ECAustralia	17/7
Oregon	74,204	2002	Rizhao 21/25 July	worldwide	\$21,000	Blessing Bulk	11/13 mos trading	16/7
Atlantic Hawk	74,204	2002	La Corunna 7/10 Aug	Stade	\$33,000	Proline	Cargill relet - trip via Kamsar	29/7
Ocean Baron	74,193	2002	Rotterdam 23/25 July	Singapore-Japan rge	\$42,500	Hanjin	trip via US east coast	17/7
Boreal	74,181	2002	Mizushima 13/15 Aug	worldwide	\$23,500	Oldendorff	3/5 months trading	27/7
Great Eagle	74,143	2005	Kawasaki end July	Japan	\$23,000	Norden	trip via EC Australia	24/7
Scythia Graeca	74,133	2002	Taichung ppt	S.China	\$17,200	Danzas	Cargill relet - trip via Indonesia	9/7
COS Intrepid	74,119	2001	Thailand 30 July/5 Aug	worldwide	\$20,000	Farengo	4/6 mos trading	13/7
COS Intrepid	74,119	2001	Kosichang 3/15 Aug	worldwide	\$24,000	2010 Ship	4/6 mos trading	20/7
Salandi	74,100	1999	San Cyprian 11/13 July	Skaw-Cape Passero	\$30,000	Cargill	Clipper relet - transatlantic round	2/7
Capt.Stefanos	74,077	2002	Koischang 5/7 July	India	\$22,000	STX Pan Ocean	trip via Indonesia	2/7

NAME	DWT	BLT	DELY	REDELY	RATE	CHARTERER	NOTES	DATE
Isminaki	74,074	1998	Inchon 7/10 Aug	China	\$23,000	Chart Not Rep	trip via EC Australia	30/7
Desert Eagle	74,066	2002	retro Jintang 2 July	China	\$18,500	Jaldhi	trip via EC Australia	8/7
Calm Seas	74,047	1999	Worldwide Jan/Mar 2010	worldwide	\$15,750	Alfred C.Toepfer	23/25 mos trading	1/7
Calm Seas	74,047	1999	Gijon 9/15 July	China	\$38,000	Pacific Bulk	TMT relet - trip via Brazil option Orinoco	8/7
Alabanda	74,044	1995	Cape Passero 6/8 July	Singapore-Japan rge	\$34,000	China Steel Express	trip via Brazil	7/7
Tian Yang Feng	74,027	2000	Dangjin 1/3 July	Japan	\$20,000	NYK	trip via Philippines with Sinter ore	1/7
Tian Yang Feng	74,027	2000	Mizushima 18/20 July	Singapore-Japan rge	\$21,000	Chart Not Rep	trip via Australia	16/7
Ming May	74,009	1997	Dandong spot	ARA	\$13,000	BHP Billiton	trip via Australia	14/7
Riruccia	74,002	1997	Trombetas 2/15 Aug	Skaw-Cape Passero	\$32,000	Komrowski Bulk Shipping	600000 bb - 2 laden legs	24/7
Tian Bai Feng	74,000	2000	Guangzhou spot	China	\$22,000	Grand China	trip via Dampier	22/7
Hispania Graeca	74,000	2001	PMO 12/14 Aug	Thailand	\$26,000	Tata NYK	trip via South Africa - Cargill relet	31/7
Shen Nong Feng	73,983	2002	CJK 16/18 July	Continent	\$11,000	Chart not Rep	trip via EC Australia	9/7
Genco Leader	73,942	1999	Rotterdam 7/12 Aug	UK	\$32,500	Cobelfret	trip via Murmansk	30/7
Genco Vigour	73,941	1999	Qingdao spot	Singapore-Japan rge int sulphur	\$21,600	Eitzen	CTP relet - trip via Nopac	9/7
Genco Vigour	73,941	1999	Fangcheng 20/30 Aug	worldwide	\$22,750	Great Pacific Navigation	3.5/4.5 months trading	29/7
Tetien Trader	73,910	2001	Shanghai 17/20 July	Singapore-Japan rge	\$20,000	Proline	trip via ECSouth America	16/7
Gaurav Prem	73,901	2005	Rotterdam spot	China	\$48,000	Bertling	trip via Narvik	23/7
Daebo Trader	73,870	2002	Haldia 30/31 July	China	\$30,000	Jaldhi	trip via EC India	28/7
Grand Lagia	73,815	1989	retro Kaohsiung 3 July	China	\$16,000	Richstone	trip via Black Sea	8/7
Marigo P	73,810	2001	Rizhao 7/9 July	China	\$20,000	BHP Billiton	trip via EC Australia	7/7
Ocean Spirit	73,807	1999	Singapore 17/19 July	Singapore-Japan	\$23,500	Chart Not Rep	ex Lucia Bulker - trip via East Coast South America	16/7
Angela Star	73,798	1998	aps Brazil 12/20 July	China	\$21,500	Pacific Bulk	1.25 million bb - trip	1/7
Mega Donor	73,767	1997	Youngheung 13/18 July	Singapore-Japan rge	\$18,000	Parakou Shipping	trip via NoPac	9/7
Elinakos	73,751	1997	PMO 25/27 July	Taiwan	\$26,000	Swiss Marine	trip via Richards Bay	9/7
Golden Shadow	73,732	1997	River Plate 20/30 July	China	\$28,000	Louis Dreyfus	730000 bb - trip	2/7
Flipper	73,726	1999	Longkou 20/25 July	worldwide	\$18,500	Cargill	11/13 mos trading	16/7
Edelweiss	73,624	2004	Lumut 29/31 July	worldwide	\$24,000	BHP Billiton	4/6 months trading	29/7
Ju Da	73,603	2005	N.China end July	worldwide	\$22,500	Great Pacific Navigation	4/6 months trading	20/7
Epanorthosis	73,600	2004	Amsterdam 11/15 July	Atlantic	\$30,000	Cargill	2 laden legs via Brazil	7/7
Pacific Eagle	73,592	2004	Corpus Christi 27/29 July	Turkey	\$31,500	Cerraghil	600000 bb - trip via mobile	21/7
Naias	73,546	2006	Nantong 16/18 July	China	\$19,000	BHP Billiton	trip via EC Australia	14/7
Naias	73,546	2006	China in d/c 20/30 Aug 1 years trading	worldwide	\$19,000	J.Aron	1 year trading	31/7
Anangel Omonia	73,519	1996	Hamburg 10/12 Aug min 60 days/15 Nov	worldwide	\$32,000	Bunge	Komrowski relet	23/7
Legiony Polskie	73,505	1991	Zhoushan 23/25 July	Singapore-Japan rge	\$18,750	grain house	trip via NoPac	20/7
Solidarnosc	73,505	1991	Ulsan ppt	China	\$19,500	AWB	trip via EC Australia	27/7
Bremen Max	73,503	1993	Pagbilao 5/10 July	Hong Kong	\$26,000	BHP Billiton	trip via Indonesia	2/7
Bremen Max	73,503	1993	Hong Kong in d/c 26/30 July	China	\$21,000	BHP Billiton	trip via EC Australia	22/7
Pole	73,409	1997	Redcar 25/27 July	worldwide	\$25,000	Rizzo-De Carlini-Bottiglieri Armatori Spa	11/13 mos trading	23/7
Pole	73,409	1997	Redcar 25 July/5 Aug	Jorf Lasfar	\$34,500	Cargill	Rizzo-Bottiglieri De Carlini Armatori Spa relet - trip via Murmansk	24/7
Vinalines Global	73,350	1994	Rizhao ppt	China	\$18,000	Hong Xiang Shipping	trip via Roberts Bank	8/7

NAME	DWT	BLT	DELY	REDELY	RATE	CHARTERER	NOTES	DATE
Linda Leah	73,317	1997	Tianjin spot	China	\$20,000	Louis Dreyfus	trip via NoPac	2/7
Great Bright	73,242	1997	EC India 10/15 July	worldwide	\$17,000	Flame	2 years trading	1/7
Great Bright	73,242	1997	Gangavaram 15/17 July	Singapore-Japan rge	\$22,500	Noble	Flame relet - trip via EC South America	9/7
Nicos L	73,193	2001	Nanjing 25/27 July	worldwide	\$19,000	Bunge	11/13 mos trading	22/7
Bunga Saga 9	73,127	1999	Zhanjiagang 22/25 July	worldwide	\$21,000	Daebo	4/6 months trading	27/7
Island Globe	73,119	1995	Dalian 16/18 July	China	\$20,500	BHP Billiton	trip via ECAustralia	17/7
Tai Profit	73,105	2001	Kemaman 4/6 Aug	China	\$24,500	Noble	trip via EC India	30/7
Sanmar Paragon	73,080	1996	Xiamen 8/10 July	China	\$21,500	Noble	trip via W.Australia	7/7
Toro	73,035	1995	Chiba ppt	China	\$18,000	Danzas	trip via EC Australia	9/7
Celerina	73,035	1999	Mizushima 27 July/3 Aug	worldwide	\$18,500	Dreyfus	11/13 mos trading	15/7
C.Journey	73,035	1995	Lanshan 24/26 July	Japan	\$21,000	K Line	trip via Australia	23/7
Barito	73,008	1996	Singapore 15/17 July	Jorf Lasfar	\$11,000	Noble	trip via Richards Bay	15/7
Tiara Globe	72,928	1998	Jintang 4/5 July	Singapore-Japan rge	\$20,000	Chart not Rep	trip via Nopac	3/7
Ataman	72,863	2001	retro PMO 4 July	Aden--Japan rge	\$20,500	Cargill	trip via EC South America	8/7
Suerte	72,515	1995	Port Said spot	Far East	\$30,000	Pioneer Navigation	3/4 mos trading	9/7
Christina IV	72,493	2000	Nanao 29/31 July	China	\$22,000	Louis Dreyfus	trip via NoPac	24/7
Kind Seas	72,493	1999	PMO ppt	China	\$31,500	Frost Global	trip via India	31/7
Mar Reina	72,474	1998	Taichung 14/17 July	worldwide	\$19,000	Chart Not Rep	2/3 mos trading	10/7
Fu Kang	72,437	1997	Xingang spot	Egyptian Med	\$13,500	Norden	trip via EC Australia	7/7
Fu Hua	72,437	1997	Shantou 10/14 July	Japan	\$18,500	Shinwa	trip via Queensland	9/7
Fu Min	72,437	1997	Cape Passero 1/3 Aug	Skaw-Cape Passero int petcoke	\$27,000	Oldendorff	trip via US Gulf	31/7
Ocean Pride	72,416	1997	Xingang 15/17 July	Singapore-Japan rge	\$17,000	Cargill	trip via NoPac	10/7
Aenaos	72,413	1998	Taichung spot	PMO	\$20,625	Transgrain	trip via ECSouth America + Persian Gulf	21/7
Shekou Sea	72,394	1996	Japan 3/10 July	Singapore-Japan rge	\$20,500	Japanese chrtr	trip via NoPac	6/7
Vogevoyager	72,105	1996	PMO ppt	S.Korea	\$26,000	Marubeni	Cargill relet - trip via Brazil	10/7
Theotokos	72,000	1984	Holland 15/25 July	Port Said	\$24,500	Chart not Rep	trip via N.France & Hodeidah	1/7
Samjohn Light	71,756	1994	Taichung 20/25 July	Hong Kong	\$18,750	D'Amico	trip via Indonesia	15/7
Transgiant	71,731	1993	Cartagena 19/20 July	Continent	\$31,000	Cargill	trip via Brazil	16/7
Samjohn Spirit	71,730	1994	Shanghai 4/6 Aug	China	\$19,000	Danzas	CTP relet - trip via Tanjung Bara	23/7
Giant Pescadores	71,671	1998	Shanghai 1/3 Aug	Japan	\$24,000	Allied Shipping	trip via Indonesia - deulemar relet	29/7
Fu Le	71,332	1998	Kinuura 16/18 July	Singapore-Japan rge	\$19,500	Norden	trip via Nopac	16/7
Fu Da	71,330	1997	Nantong 25/26 July	Singapore-Japan rge	\$22,000	Chart Not Rep	trip via EC Australia	20/7
Jag Arnav	71,122	1995	Younghung 20/25 July	China	\$16,850	Chart Not Rep	trip via Roberts Bank	16/7
APJ Suryavir	71,037	1990	Singapore spot	China	\$23,000	Jaldhi	trip via EC India	28/7
Humber	70,912	1982	retro Mundra 24 July	Singapore-Japan rge	\$20,500	Chart Not Rep	trip via EC South America	28/7
Birthday	70,740	1993	Shibushi 4/6 Aug	Singapore-Japan rge	\$21,500	Oldendorff	trip via NoPac	29/7
Renuar	70,516	1993	retro PMO 4 July	Far East	\$26,000	Chart Not Rep	trip via EC South America	13/7
B. Asia	70,424	1990	S.China ppt	China	\$17,500	Sinotrans UK	trip via Brazil	1/7
Hanjin New Orleans	70,378	1994	Liverpool 3/5 July	UKC	\$31,000	Suek	trip via Murmansk	1/7
Iguana	70,349	1996	Krishnapatnam 20/22 July	China	\$27,000	AHT	trip via EC India	14/7
Annoula	70,281	1997	Koahsiung 12/14 July	China	\$18,250	Danzas	Glencore relet - trip via EC Australia	9/7
YM Equality	70,252	1996	Hong Kong 1/5 July	Malaysia	\$18,000	Everspeed	trip via Indonesia	1/7
New Champion	70,000	1996	Malta 17/19 July	Stade	\$26,000	Proline	trip via Kamsar	10/7
Mahakam	69,997	1996	Fangcheng 6/8 July	China	\$15,000	Chart Not Rep	trip via Indonesia	10/7
Mahakam	69,997	1996	Fangcheng 20/22 July	Singapore-Japan rge	\$18,000	Dreyfus	trip via ECSouth America	16/7

NAME	DWT	BLT	DELY	REDELY	RATE	CHARTERER	NOTES	DATE
De Zhou Hai	69,963	1995	Jorf Lasfar 1/3 Aug	Atlantic	\$34,000	Transbulk	2 laden legs	20/7
Jin Pu Hai	69,900	1996	Xiamen 12/14 July	China	\$16,750	Sinoeast	trip via EC Australia	10/7
Fen Jin Hai	69,877	1995	Beilun 16/18 July	Singapore-Japan rge	\$19,000	Danzas	trip via West Australia	15/7
Shi Dai 3	69,659	1994	Far East end July	worldwide	\$18,000	Chart Not Rep	4/6 mos trading	13/7
Power Loong	69,618	1992	Zhoushan 28/30 July	S. Korea	\$20,500	S. Korean chrtr	trip via Indonesia	23/7
Shi Dai 7	69,616	1993	CJK 28/30 July	Singapore-Japan rge	\$18,000	STX Pan Ocean	trip via Indonesia	27/7
Beilun Seal	69,614	1997	Zhouhai 25/27 July	China	\$21,000	Rio Tinto	trip via Australia	22/7
Full Spring	69,587	1994	Singapore 24/26 July	Skaw-Cape Passero	\$16,000	Norden	trip via Richards Bay	21/7
Full Sources	69,573	1994	Kashima 7/12 July	China	\$21,500	Cargill	trip via NoPac	2/7
Mass Prosperity	69,555	1993	Immingham 24/27 July	China approx	\$37,000	Golden Ocean	trip via Port Cartier	16/7
Xin Dong Guan 3	69,512	1996	Indonesia 10/15 July	China	\$21,000	Chart Not Rep	trip via W.Australia	10/7
Aristides N.P.	69,268	1993	Chiba spot	S. Korea	\$18,000	Alfred C.Toepfer	trip via NoPac	13/7
Energy	69,255	1996	Tianjin 19/21 July	worldwide	\$21,000	Cargill	bop 1/30 Oct 2009	21/7
Guo Dian 6	69,235	1993	aps Indonesia 3/5 July	India	\$20,000	Armada Singapore	230,000 B/B - trip	1/7
Maria V	69,229	1987	passing Patras prompt	Port Said	\$28,000	Egyptian Bulk Carriers	trip via Black Sea + Red Sea	16/7
Suryawati	69,100	1996	aps Richards Bay 14/20 July	India	\$27,000	Armada Singapore	575000 gbb - trip	6/7
RZS Joy	69,050	1995	Lanshan 17/20 July	south China	\$16,300	Shinyang	trip via Indonesia	15/7
Silver Mei	68,876	1989	Xiamen 29/31 July	S. Korea	\$21,000	Daeyang	trip via Indonesia	27/7
Yun Tong Hai	68,788	1990	S. Korea 31 July/3 Aug	China	\$20,500	Chart Not Rep	trip via US Gulf	29/7
Yue Dian 3	68,676	1989	Huangpu ppt	China	\$17,500	Danzas	trip via Indonesia	27/7
SD Glory	68,634	1987	Barcelona 15/20 July 3/4 months trading	Skaw-Cape Passero	\$24,000	Oldendorff	redel Singapore-Japan rge 29000	10/7
Neelam	68,395	1989	Umm Qasr 15/17 July	China	\$21,800	Chart Not Rep	trip via PG	14/7
Aowisdom	68,377	1988	Lanshan 9/13 Jul	China	\$17,000	Danzas	trip via EC Australia	6/7
Laconia	68,283	1987	Indonesia mid July	worldwide	\$17,000	Glencore	4/6 mos trading	6/7
Courage	66,754	1984	Huangpu 1/3 Aug	S. China	\$15,000	OBS	trip via Indonesia	30/7
Alkaios	66,221	1985	Cape Passero ppt	Cape Passero int coal	\$23,000	Marin Bulk	trip via USEC & Black Sea	10/7
SD Progress	65,708	1989	aps USGulf 4/8 August	Singapore-Japan rge	\$32,000	Cargill	650000 bb - trip	17/7
Haydar	65,337	1981	Diliskelesi 1/5 Aug	China int ore	\$32,000	Chart Not Rep	trip via Black Sea	24/7
Gem of Aqaba	65,159	1982	Paradip 11/14 July	China	\$19,500	Seawin	trip	8/7
Gem of Haldia	64,930	1982	Paradip ppt	China	\$24,000	Seawin	trip via EC India	21/7
Hebei Express	64,897	1984	aps Indonesia ppt	China	\$11,000	Danzas	130000 bb - trip	9/7
Hebei Express	64,897	1984	Shantou 27/29 July	Singapore-Japan rge	\$15,500	Danzas	trip via Indonesia	24/7
3 Maj	64,850	1988	Huangpu ppt	China	\$16,000	Chart Not Rep	trip via Indonesia	23/7
Mara	64,850	1989	Xingang 29/31 July	PMO int slag	\$12,000	Chart Not Rep	trip via N.China & PG	24/7
Giovanni Della Getta	64,792	1987	Lianyungang spot	China	\$17,000	Oceanvast	trip via West Australia	16/7
Palini	64,589	1980	Singapore ppt	China	\$17,000	Prime East	trip via EC India	20/7
Vancouver Victory	64,236	1981	Pakistan 5/10 July	WC India	\$8,500	Chart not Rep	trip via Indonesia	2/7
Azure	64,230	1982	retro Mundra 30 June	Aden-PMO rge	\$20,000	Chart not Rep	trip via ECSAmerica	3/7
Zheng Hang	63,942	1983	Ningde 11/20 July	S. Korea	\$13,000	Chart not Rep	trip via Indonesia	7/7
Dong Qing Hai	62,873	1991	Huangpu 26/29 July	China	\$19,000	Chart Not Rep	trip via West Australia	23/7
Yiallia	62,166	1982	E. Med ely Aug	Port Said	\$24,000	Chart Not Rep	trip is via Black Sea and Red Sea	22/7
Friendly Seas	58,879	2008	Singapore spot	China approx	\$19,000	Chart Not Rep	trip via East Coast India	14/7
Emmanuel C	58,837	2005	Haldia 28/30 July	China approx	\$33,000	Chart Not Rep	trip	21/7
Tenki Maru	58,758	2009	Mundra 13/16 July	Singapore-Japan	\$21,000	Chart Not Rep	WBC relet - trip via East Coast South America	10/7
Kastro	58,750	2008	Kohsichang 17/23 July	Singapore-Japan approx	\$19,000	D'Amico	trip via South east Asia	9/7
Medi Firenze	58,722	2008	Kohsichang 27/30 July	China	\$24,000	HMM	trip via East Coast India	27/7
Bulk Pegasus	58,500	2009	China end July	worldwide	\$18,750	Prime East	1 years trading	22/7

NAME	DWT	BLT	DELY	REDELY	RATE	CHARTERER	NOTES	DATE
Tennei Maru	58,470	2009	West Africa early July	Singapore-Japan	\$26,500	STX Pan Ocean	trip via East Coast South America	6/7
Nikolaos A	58,000	2009	newbuilding 58000	worldwide	\$18,000	TMT	ex yard China 20 Aug 13/14 months trading	24/7
Jin Gang	57,968	2009	Visakhaptnam 3/10 August	worldwide approx	\$18,750	SST	1 years trading	22/7
Jin Wan	57,000	2009	Central Med 8/10 July	Singapore-Japan approx	\$31,000	Chart not Rep	trip via Black Sea	6/7
Bao Wealth	57,000	2009	ex yard Zhenjiang August	worldwide	\$17,000	Chinese charterer	9/12 mos trading	13/7
Father Neptune	56,950	2009	Chittagong 24/26 July	China approx	\$29,000	Seawin	trip via India	22/7
Darya Brahma	56,056	2006	Chennai 8/15 July	China	\$18,000	Chart not Rep	trip via ECSouth America	2/7
Darya Bhakti	56,045	2005	Kandla 13/14 July	China approx	\$22,250	Chart Not Rep	trip	13/7
Iris Halo	56,034	2005	Gangavaram spot	China	\$32,000	Bagadiya Brothers	trip	23/7
Prabhu Gopal	56,025	2003	Paradip 10/12 July	China approx	\$23,000	Chart not Rep	trip	6/7
Marjatta P	56,023	2006	South east Asia spot	China	\$27,500	Chart Not Rep	trip via East Coast India	23/7
Ikan Serong	56,023	2006	EC India spot	China	\$30,000	Million Miles Shipping	trip	21/7
Sibulk Initiator	56,017	2007	Chittagong 5/7 July	Singapore-Japan	\$18,500	STX Pan Ocean	trip via East Coast South America	3/7
Darya Lakshmi	56,000	2009	Japan end July/early August	Singapore-Japan approx	\$18,500	Norden	trip via US Gulf	20/7
Windsor Adventure	55,975	2008	Kohsichang end July	Thailand	\$21,000	Cargill	trip via Indonesia	27/7
KT Venture	55,866	2007	St.Lawrence 23/25 July	USAtlantic	\$22,500	Norden	3 laden legs	17/7
Katrine Star	55,838	2005	aps US Gulf end July	Singapore-Japan	\$38,000	Norden	trip	15/7
Manna	55,697	2005	Fuzhou 27/29 July	East Coast India	\$17,250	Jaldhi	trip via Indonesia	27/7
Poseidon SW	55,688	2008	Morocco 18/22 July	Atlantic	\$23,000	Pioneer	min 3 abt 5 mos trading	16/7
Lake Dynasty	55,650	2009	Japan 16/18 July	South Korea approx	\$17,000	Chart Not Rep	trip via East Coast Australia	13/7
Anna-Elisabeth	55,518	2007	Newark early July	Atlantic	\$23,000	Norden	2/3 laden legs	3/7
Komatsushima Star	55,500	2009	Santos prompt	Bangladesh approx	\$29,500	JKI Shipping	400000 bb - trip via ECSouth America	30/7
Sealuck 2	55,452	2004	China early August	worldwide approx	\$17,900	Chart Not Rep	3/5 mos trading	20/7
Seaboss	55,426	2004	Tilbury 11/18 Aug 3/5 months trading	Atlantic	\$22,000	Oldendorff	3/5 mos trading	31/7
Tai Hunter	55,418	2007	aps Nopac end July	West Coast Central America approx	\$17,000	Chart not Rep	trip	6/7
Tai Honesty	55,418	2007	South Korea 17/19 July	Singapore-Japan intention Pet Coke	\$18,000	Bulkhandling	trip via US West Coast	14/7
Genco Predator	55,407	2005	Visakhapatnam mid July	China approx	\$24,000	Chart Not Rep	trip	14/7
Dalior	55,257	2005	Indian Ocean end July	worldwide approx	\$17,100	Rizzo-Bottiglieri-De Carlini-Armatore spa -	15/18 months trading	20/7
Navios Hios	55,180	2002	Haldia end July/early August	Singapore-Japan	\$24,000	SK Shipping	trip	15/7
An Ning	55,000	2009	Houston 13/15 July	Mediterranean	\$33,000	Bulk Handling	trip	7/7
Sparna	54,881	2006	San Ciprian prompt	West Africa approx	\$24,500	Oldendorff	trip via N.Spain	7/7
Sparna	54,881	2006	Abidjan mid Aug	Continent	\$22,000	Navision	K Line relet - trip via West Africa	29/7
Annita	53,806	2005	Haldia spot	China	\$29,000	Seawin	trip	23/7
Grigorpan	53,806	2002	passing Durban spot	India-Japan rge	\$27,000	ED&F Man	trip via Brazil	30/7
Marietta Bolten	53,734	2009	Singapore spot	worldwide	\$16,500	Shipping	3/5 mos trading	14/7
Xiamen Sky	53,589	2005	Mumbai 21/31 July	China	\$22,000	Uniwell	trip	20/7
Vela	53,565	2007	Gaeta end July	Atlantic approx	\$19,100	WBC	4/6 mos trading	16/7
Bulk Voyager	53,565	2005	Taiwan 17/22 July	East Coast India	\$17,000	Chart Not Rep	trip via Indonesia	15/7
Port Nelson	53,553	2001	Chennai 25/27 July	China	\$33,000	Prime East	trip	22/7
Marie Grace	53,549	2008	Dominican Republic mid July	east Med approx	\$31,000	Noble	trip via North Coast South America	6/7
White Diamond	53,538	2008	Haldia end July/end August	worldwide	\$18,400	Cosco	3/5 months trading	23/7
White Diamond	53,538	2008	Haldia early August	China	\$28,000	Bagadiya Bros	trip	30/7

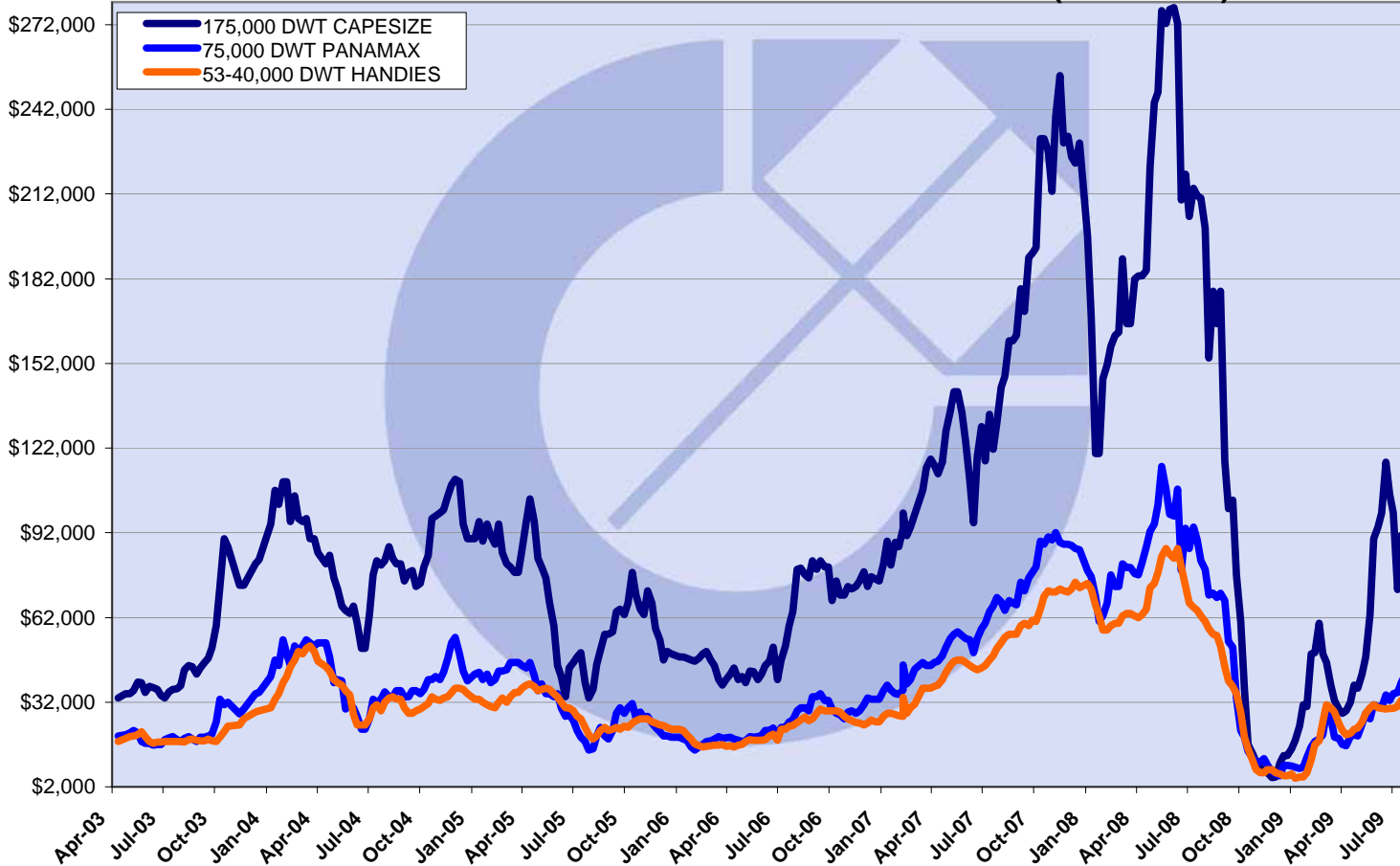
NAME	DWT	BLT	DELY	REDELY	RATE	CHARTERER	NOTES	DATE
Salaminia	53,531	2001	Longkou 4/10 July	worldwide	\$17,150	Chinese charterer	balance of period until March/April 2010	1/7
Angor	53,500	2009	retro Kandla 21 July	Singapore-Japan approx	\$19,000	Chart Not Rep	trip via East Coast South America	27/7
Castlegate	53,450	2008	West Med spot	passing Durban approx	\$21,500	Cargill	trip via Tampa and India	16/7
Daebo Pioneer	53,450	2007	Mariveles 10/15 Aug	China approx	\$20,000	Chart Not Rep	trip via Philippines	31/7
Ken Sea	53,400	2009	Charleston 28/30 July	India	\$38,000	Clipper	trip via USAC	16/7
Simge Aksoy	53,393	2006	Lumut spot	Singapore-Japan rge	\$22,000	Chart Not Rep	trip via ECIIndia	29/7
Madonna 3	53,390	2007	Laizhou 10/12 July	India approx	\$13,000	Chart not Rep	trip via South east Asia	9/7
City	53,352	2007	Chennai 14/16 July	China approx	\$20,000	Seawin	trip	13/7
Cake	53,350	2007	Haldia early July	China	\$19,000	Jaldhi	trip	1/7
Port Mouton	53,299	2006	Jorf Lasfar spot	Singapore-Japan rge	\$23,750	Cargill	2 laden legs	7/7
Chimes	53,000	2008	North China 18/20 July	worldwide approx	\$16,000	DBCN	3/5 mos trading	10/7
Yin Shun	53,000	2009	Xingang 16/18 July	worldwide approx	\$15,750	Oldendorff	3/5 mos trading	14/7
Prabhu Daya	52,822	2001	Kakinada 30/31 July	China	\$27,000	Chart Not Rep	trip	30/7
Tai Happiness	52,686	2004	PMO 17/18 July	China	\$22,000	Chart Not Rep	trip via India	17/7
Tropical Queen	52,498	2005	Chennai 20/25 July	China	\$19,000	Seawin	BHP relet - trip	10/7
Apageon	52,483	2005	Tarragona spot	Atlantic	\$18,000	Hanjin	4/6 mos trading	8/7
Doric Spirit	52,428	2001	USGulf mid July	Port Said approx	\$29,500	Everdere	trip via Red Sea	9/7
Bulk Saturn	52,408	2003	Huangpu 19/22 July	Thailand	\$16,100	Cargill	trip via Indonesia	14/7
Sam Tiger	52,400	2003	North China spot	Singapore-Japan	\$19,750	Ark Shipping	trip via Nopac	16/7
Crown Princess	52,347	2005	Otranto prompt	Atlantic	\$19,750	Chart Not Rep	2/4 mos trading	13/7
Courageous	52,346	2005	North China spot	worldwide	\$16,500	Eastern Ocean	3/5 mos trading	10/7
Annika	52,050	2006	passing Cristobal 26/28 July	Atlantic	\$27,750	United	200000 bonus if redel Muscat-Japan - 2/3 laden legs	24/7
Bianco Bulker	52,036	2001	Mumbai early July	China approx	\$21,000	Chart not Rep	trip	1/7
Rainbow	52,000	2004	Fujairah spot	worldwide approx	\$18,150	WBC	3/5 mos trading	15/7
Maria D	51,514	2002	Algeciras 19/25 July	Skaw/Passero approx	\$22,000	Chart Not Rep	Transatlantic round voyage	14/7
Kang Fu	51,069	2002	Port Said 17/19 July	Singapore-Japan approx	\$29,500	MUR	trip via Black Sea and Gulf of Aden	15/7
Curia	51,029	2001	Chennai 13/15 July	China approx	\$20,500	Noble	trip	10/7
Tai Harmony	51,008	2001	Kohsichang spot	West Africa	\$9,500	Chart not Rep	trip via Indonesia	6/7
Prabhu Jivesh	50,956	2002	Tomakomai in d/c end July	worldwide	\$18,500	Cargill	4/6 mos trading	23/7
Jin An	50,786	2000	Port Said 4/5 July	Atlantic	\$16,000	Copanship	3/5 mos trading	2/7
Jin An	50,786	2000	Gibraltar 11/12 July	Atlantic	\$21,000	Meridian Bulk	3/5 mos trading - Copanship relet	10/7
Jin Ping	50,777	2002	Cristobal 30 June	Med including Adriatic	\$27,750	Energy	trip	3/7
Jin Fu	50,777	2001	aps Alexandria 6/7 July	WCIndia	\$35,000	Ispat	trip	2/7
RM Dynasty	50,568	2004	PMO 26/30 July	China	\$22,000	Chart Not Rep	trip via South Africa	20/7
Da Peng Hai	50,428	2002	North China early August	worldwide	\$16,500	Triumph Carriers	non-grabber - 5/7 months trading	17/7
Saffron	50,316	2004	aps USGulf end July	Continent	\$35,000	Oldendorff	trip	17/7
Falcon	50,296	2001	Kandla 25 July/5 August	worldwide	\$20,000	Uniwell	Cosco Qingdao relet - min 4 max 6 mos trading	20/7
Santana	50,271	2001	Navlakhi ely/mid July	India	\$17,500	Chart not Rep	trip via South Africa	3/7
Aifanourios	50,220	2002	Navlakhi mid July	Indian Ocean approx	\$14,000	Chart Not Rep	trip via East Coast South America	14/7
Tern	50,209	2003	Iskenderun 15/24 July	worldwide	\$20,500	Cargill	3.5/6.5 mos trading	7/7
Osprey 1	50,206	2002	Jintang 13/15 July	USEC approx	\$6,500	Norden	trip via Bukpyung	10/7
Darya Dhyan	50,149	2001	Kohsichang end July	East Coast India	\$19,500	Oldendorff	trip via Indonesia	23/7
Sparrow	48,220	2000	aps Recalada 13/20 July	SE Asia	\$25,000	Noble	320000 bb - trip	7/7
Jin Bi	48,220	2000	Xingang spot	worldwide approx	\$15,250	Cargill	4/6 mos trading	16/7
Feng Hai	47,980	1999	Abidjan 4/8 August	Singapore-Japan	\$26,750	Chart Not Rep	trip via East Coast South America	27/7

NAME	DWT	BLT	DELY	REDELY	RATE	CHARTERER	NOTES	DATE
Dingxianghai	47,787	2000	Luanda 14/16 July	Gib/Skaw range	\$16,750	Armada	trip via East Coast South America	9/7
Tai Hua Hai	47,377	1991	South Korea spot	South east Asia intention salt	\$9,000	Eitzen	trip via Dampier	1/7
Aolucky	47,280	1998	South Brazil early August	Singapore-Japan approx	\$32,000	Chart Not Rep	trip	24/7
VOC Rose	47,183	1998	Haldia mid July	China approx	\$20,000	Chart not Rep	trip	9/7
Soul of Luck	46,826	1991	West Coast India 20/30 July	Indian Ocean	\$12,800	Cargill	Woodchip carrier - trip via Brazil	10/7
COS Fair	46,689	1999	Port Harcourt 4/14 August	worldwide approx	\$21,000	Chart Not Rep	bop about 5/6 months	29/7
Mathios	46,678	1996	USGulf 5/10 August	worldwide approx	\$27,500	Copenship	balance of period about 100 days trading	22/7
Konkar Georgis	46,670	1997	Transatlantic round voyage	Atlantic	\$21,000	Armada	Transatlantic round voyage	14/7
Clean Seas	46,640	1995	China spot	South east Asia	\$13,000	Oldendorff	trip via Nopac	6/7
Expander	46,634	2000	Visakhapatnam 16/18 July	China	\$19,250	Chart Not Rep	trip	14/7
Brother Glory	46,211	1998	passing Durban 18/22 July	Atlantic	\$16,000	Chart Not Rep	2 laden legs	15/7
Top Rich	46,027	1998	Jacksonville spot	North Coast South America	\$20,000	Chart not Rep	trip via USGulf	3/7
Postojna	46,000	1998	Gibraltar spot	Italy approx	\$19,000	Bulk Handling	Transatlantic round voyage	9/7
Power Ranger	45,950	1996	Visakhapatnam 20/22 July	China approx	\$17,500	Chart Not Rep	trip	14/7
Stavros P	45,863	1994	Port Harcourt 22/25 July	worldwide	\$20,000	WBC	4/6 mos trading	15/7
Sophia	45,758	1996	Cartagena Columbia early August	Continent	\$32,000	Copenship	trip	23/7
Chrysoula S	45,742	1996	passing Durban mid July	worldwide	\$17,600	Bunge	3/5 mos trading	15/7
Sea Rose	45,700	1995	PMO 1/10 Aug	Singapore-Japan rge approx	\$16,750	Island View Shipping	trip via South Africa	28/7
Maria Th	45,622	1996	China mid July	worldwide	\$14,250	Chart not Rep	3/5 mos trading	6/7
Union Ranger	45,621	1995	North China 20/22 July	worldwide	\$14,500	STX Pan Ocean	min 3/max 5 months trading	17/7
DS Commander	45,518	1994	Continent early August	worldwide approx	\$24,000	Oldendorff	3/5 months trading	23/7
Ince Pacific	45,514	2001	South China spot	China	\$15,000	Chart not Rep	trip via Indonesia	6/7
Ince Pacific	45,514	2001	North China end July	worldwide	\$16,500	Chart Not Rep	balance of period 3/4 months trading	22/7
Efi Theo	45,423	1997	Indonesia 1/5 August	Black Sea	\$10,500	Aquavita	trip via Australia	22/7
Orchid Ocean	45,262	1994	Nemrut Bay spot	PMO approx	\$31,000	Chart Not Rep	trip via Black Sea	29/7
Konkar Theo	45,232	1994	North China spot	Singapore-Japan	\$14,500	Chart Not Rep	trip via Australia	22/7
Antonis	45,090	1984	Chittagong 8/12 Aug	China approx	\$21,500	Chart Not Rep	trip via India	29/7
Lara Rickmers	45,071	1997	Nantong spot	Singapore-Japan	\$8,000	Chart not Rep	Conbulker - trip via Nopac	8/7
Eleoussa	44,950	1994	Nantong spot	West Africa intentioncement	\$8,000	STX Pan Ocean UK	trip	3/7
United Stars	43,991	1995	Gijon 28/30 July	Singapore-Japan	\$32,000	Chart Not Rep	trip via Continent	28/7
Grand View	43,980	1994	Gibraltar spot	Turkey approx	\$25,000	Norton	trip via UK	15/7
B America	43,575	1984	Santos 27 July/5 Aug	PMO-Japan rge	\$20,000	Ultrabulk	410000 bb - trip	28/7
Delta Ranger	43,108	1995	Lagos 7/15 August	Black Sea	\$16,000	Oldendorff	trip via Conakry	24/7
Ellenita	42,838	1984	Port Klang 26/30 July	Pakistan	\$14,000	Shadab	trip via Indonesia	16/7
Sanko Royal	42,529	1995	Richards Bay-Durban early August	Continent approx	\$15,000	IVS	trip	24/7
Sealady	42,183	1995	Lagos 8/12 July	Singapore-Japan approx	\$27,000	Norden	trip via Owendo	6/7
Leros	42,083	1985	Piraeus 16/20 July	Atlantic approx	\$13,000	Chart Not Rep	3/5 mos trading	10/7
Serife	41,544	1984	Visakhapatnam prompt	Singapore-Japan rge	\$14,000	Oldendorff	trip via South Africa	14/7
Oak 2	41,515	1997	aps Paranam 15/20 July	Norway	\$16,500	HBC	295000 bb - trip	8/7
Scanda	40,187	1990	Shantou 7/8 July	Singapore	\$8,750	East Sunrise	trip via Vietnam	8/7
Nava Eliza	40,045	1984	South Brazil mid July	Black Sea	\$17,500	Dreyfus	Conbulker - trip	10/7

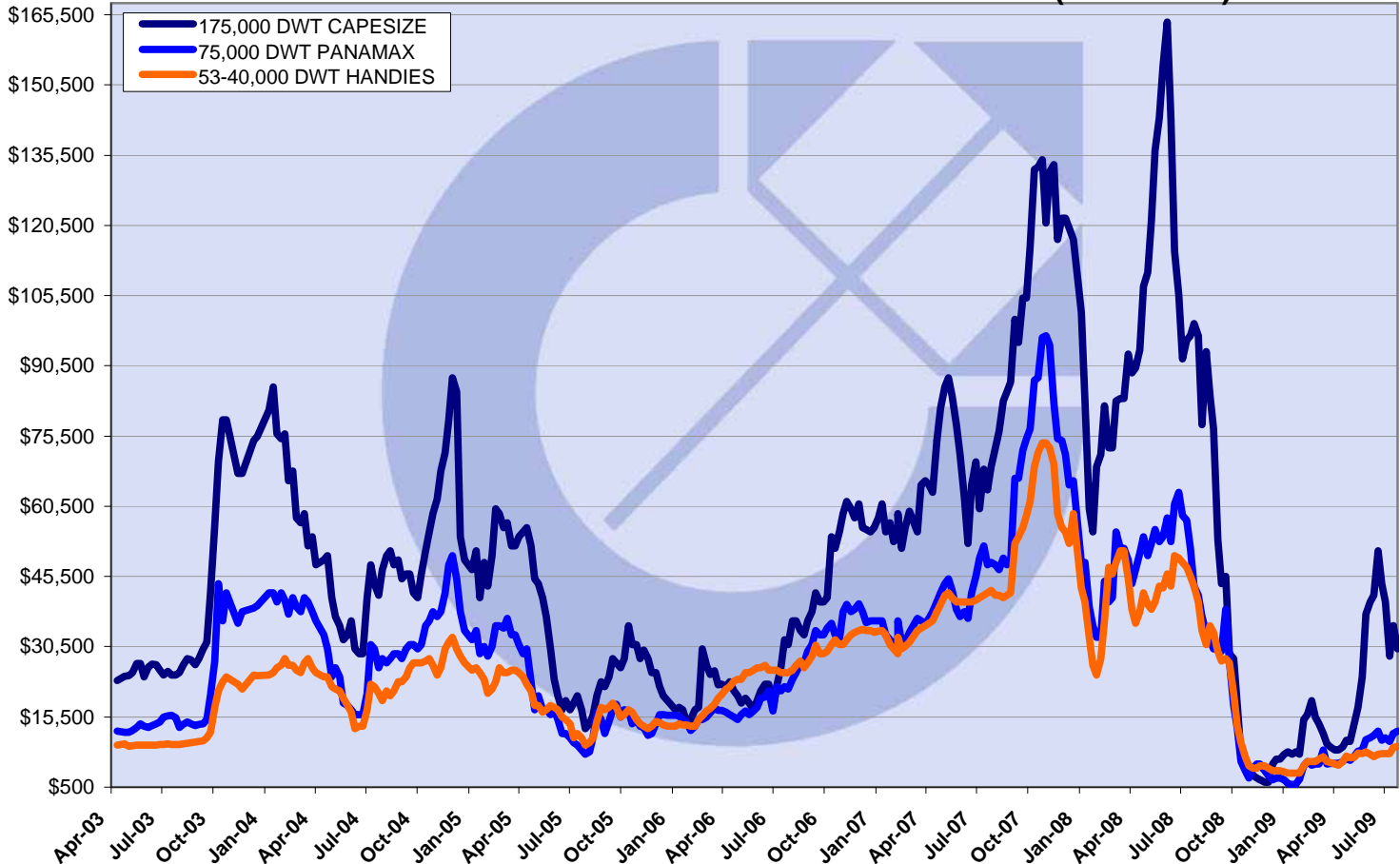
NAME	DWT	BLT	DELY	REDELY	RATE	CHARTERER	NOTES	DATE
Samanta	39,110	1992	Le Havre 22/26 July	USGulf intention steel products approx	\$16,850	Clipper	trip	8/7
Emperor	38,870	1986	passing Canakkale 9/12 July	Nigeria intention bulk cement	\$13,750	Nom (UK) Ltd	trip	13/7
Princess 1	38,858	1994	Natal, Brazil spot	Continent	\$16,900	Navision	trip via Brazil	28/7
Tupi Maiden	38,852	1992	Port Said prompt	Persian Gulf	\$24,500	Cosmotrade	trip via Black Sea	21/7
Golden	38,099	1985	Port Harcourt prompt	Black Sea	\$9,000	Oldendorff	trip via Conakry	8/7
Hui Sheng	37,586	1984	Shenzen 27/29 June	worldwide approx	\$9,000	Progress Bulkcarriers	4/6 mos trading	2/7
Normandie	36,120	1998	South Africa early Aug	Continent	\$12,500	Island View Shipping	trip	28/7
Bright Ocean 2	32,128	1999	Ho Chi Minh 13 July	Singapore-Japan rge	\$10,000	Armada	trip via Australia	13/7
Nona Bulker	31,922	2009	Surabaya prompt	PMO	\$15,000	Chart Not Rep	trip via Australia and Persian Gulf	22/7
Commodore	30,046	1997	Qingdao end July/early August	worldwide approx	\$11,250	Chart Not Rep	1 years trading	24/7
Genco Explorer	29,952	1999	Shanghai 9/10 July	Lumut approx	\$9,500	TPC	trip via East Australia	9/7
Selendang Mayang	29,302	1997	Cigading in d/c 7/12 August	Singapore-Japan rge	\$10,500	STX Pan Ocean	90/110 days trading	21/7
JBU Mistral	29,100	2009	Ghazaouet 9/10 July	South Africa approx	\$12,250	IVSI	trip via Continent	8/7
Seagate	28,836	1989	Lagos prompt	Atlantic	\$12,500	Chart Not Rep	2 laden legs trading via South America	21/7
Darya Sur	28,814	1997	Haldia 26/31 July	China	\$15,000	Bagadiya Brothers	trip	23/7
Anthia	28,736	2002	wvr San Nicolas (Argentina) 29 July/5 Aug	Casablanca	\$11,750	Oldendorff	245000 bb - trip	23/7
Kingfisher D	28,424	2002	dlosp EC Honduras 8/14 July	Lagos int bulk wheat	\$19,000	NOM (UK) Ltd	trip via US Gulf	2/7
Amyntor	28,400	2009	ex yard Imabari mid July	Bay of Bengal	\$10,350	Chart Not Rep	trip via Nopac	14/7
Mardi Gras	28,399	2006	Taiwan end July	Taiwan	\$10,600	TNT	trip via Australia	22/7
Hanjin Penang	27,364	1997	Singapore spot	Taiwan approx	\$8,500	Chart Not Rep	trip via Australia	13/7
Hanjin Penang	27,364	1999	Taichung 5/10 Aug	Singapore-Japan rge	\$13,000	Sinoeast	2 laden legs int palm kernel expellers first leg	30/7
Dong Chang Hai	27,137	1997	Newport UK 28/29 July	West Africa	\$13,000	Chart Not Rep	trip via north France	27/7
Imperius	26,566	1997	aps Le Havre ppt	West Africa	\$14,500	Sometra	trip	31/7
Falcon Traveller	26,441	1994	Oran 24/27 July	Angola	\$13,500	Empros Lines	trip via north Spain	28/7
African Lion	26,300	1995	Lianyungang 26/28 July	Pakistan/WCIndia	\$10,500	Chart Not Rep	trip	22/7
Suchada Naree	23,732	1994	Pusan spot	Southeast Asia	\$8,000	Oldendorff	2 laden legs incl breaking IWL	8/7
Shawnee Princess	22,323	1984	dop Shanghai early July	West Africa	\$6,250	Chart not Rep	trip	3/7
Formosa Container No.1	21,888	1982	Namibe 5/10 Aug	PG	\$4,800	MUR	trip via EC South America - Multipurpose	30/7

red colour indicates vessel prior fixing failed

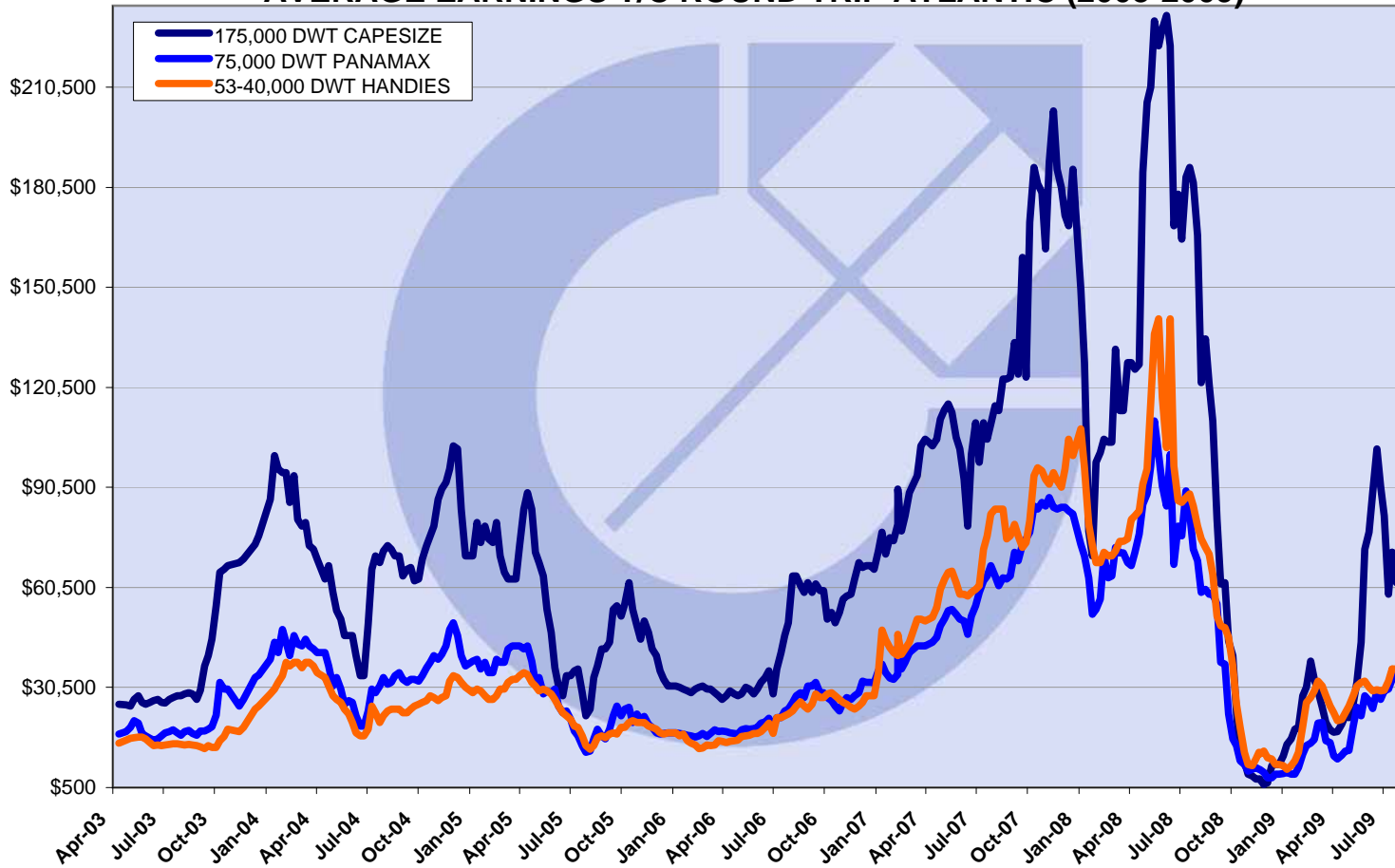
AVERAGE EARNINGS T/C TRIP CONT - FAR EAST (2003-2009)



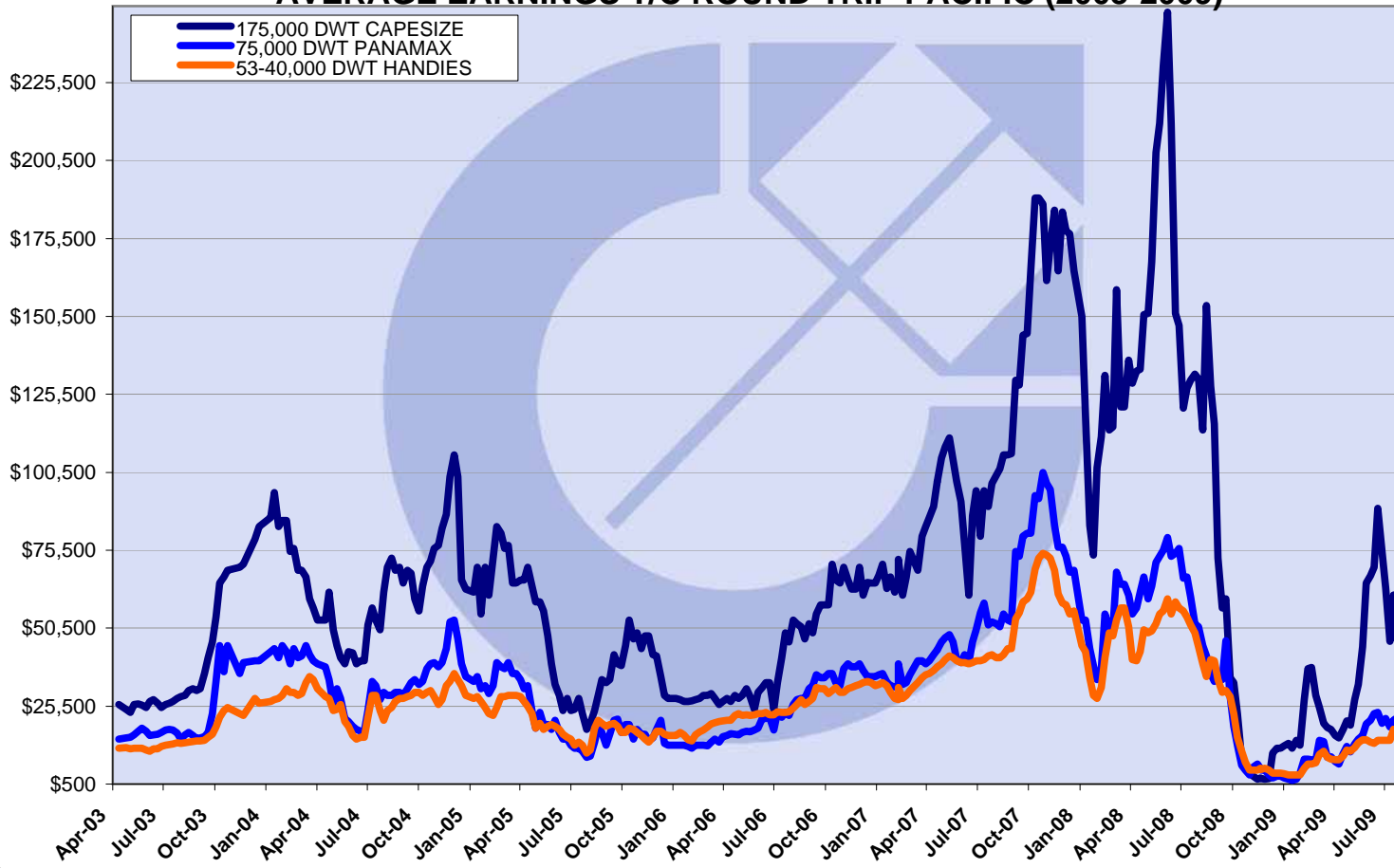
AVERAGE EARNINGS T/C TRIP FAR EAST - CONT (2003-2009)



AVERAGE EARNINGS T/C ROUND TRIP ATLANTIC (2003-2009)



AVERAGE EARNINGS T/C ROUND TRIP PACIFIC (2003-2009)



AVERAGE EARNINGS T/C 12 MONTHS (2003-2009)

